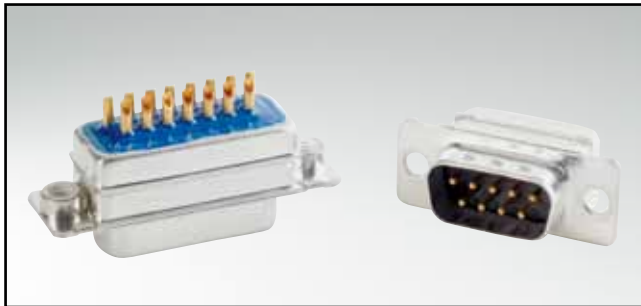


π-FILTER D-SUB STANDARD

Solder cup – Precision machined contacts – For wire size AWG 20

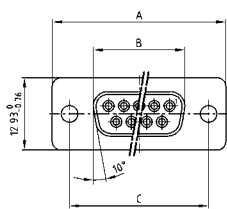


RoHS compliant – CSA listed, File No.: LR 115000-1 – UL listed, File No.: E202784

DESCRIPTION

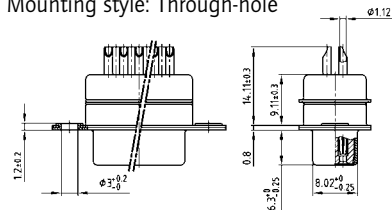
- Suitable for wire size **AWG 20**
- Mounting styles:
 - with through-hole, Ø .118"/3 mm
 - with 4-40 UNC or M3 threaded insert
- Quality class 3 (also available in quality class 1)
- Shell: Steel tin plated (brass tin plated on request)

SOCKET CONNECTOR

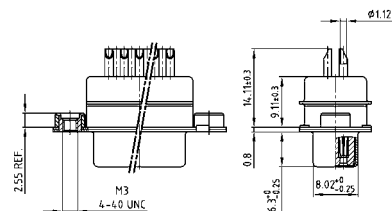


No. of pos.	A -0.76	B -0.25	C
09	31.19	16.46	25.00 ^{+0.12} / _{-0.13}
15	39.52	24.79	33.30 ^{+0.15} / _{-0.10}
25	53.42	38.50	47.04 ^{+0.13}
37	69.70	54.96	63.50 ^{+0.13}

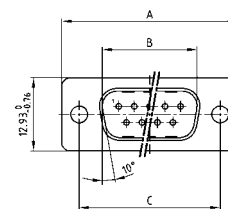
Mounting style: Through-hole



Mounting style: Threaded insert

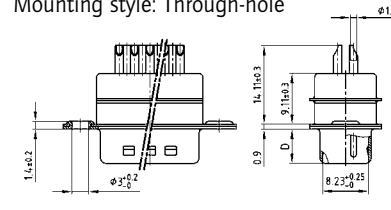


PLUG CONNECTOR

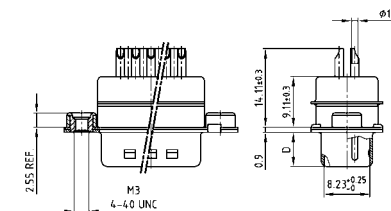


No. of pos.	A -0.76	B +0.25	C	D -0.3
09	31.19	16.79	25.00 ^{+0.12} / _{-0.13}	6.12
15	39.52	25.12	33.30 ^{+0.15} / _{-0.10}	6.12
25	53.42	38.84	47.04 ^{+0.13}	5.99
37	69.70	55.30	63.50 ^{+0.13}	5.99

Mounting style: Through-hole



Mounting style: Threaded insert



ORDER DATA

Capacitance 2 x 180 pF

SOCKET CONNECTOR			PLUG CONNECTOR		
No. of pos.	Mounting style	Part Number	No. of pos.	Mounting style	Part Number
09	Through-hole	242 A 28980 X	09	Through-hole	241 A 29080 X
15	Through-hole	242 A 28990 X	15	Through-hole	241 A 29090 X
25	Through-hole	242 A 29000 X	25	Through-hole	241 A 29100 X
37	Through-hole	242 A 29010 X	37	Through-hole	241 A 29110 X
09	4-40 UNC Threaded insert	242 A 29140 X	09	4-40 UNC Threaded insert	241 A 29240 X
15	4-40 UNC Threaded insert	242 A 29150 X	15	4-40 UNC Threaded insert	241 A 29250 X
25	4-40 UNC Threaded insert	242 A 29160 X	25	4-40 UNC Threaded insert	241 A 29260 X
37	4-40 UNC Threaded insert	242 A 29170 X	37	4-40 UNC Threaded insert	241 A 29270 X
09	M3 Threaded insert	242 A 29300 X	09	M3 Threaded insert	241 A 29400 X
15	M3 Threaded insert	242 A 29310 X	15	M3 Threaded insert	241 A 29410 X
25	M3 Threaded insert	242 A 29320 X	25	M3 Threaded insert	241 A 29420 X
37	M3 Threaded insert	242 A 29330 X	37	M3 Threaded insert	241 A 29430 X

π-FILTER D-SUB STANDARD

Solder cup – Precision machined contacts – For wire size AWG 20

ORDER DATA

Capacitance 2 x 370 pF

SOCKET CONNECTOR			PLUG CONNECTOR		
No. of pos.	Mounting style	Part Number	No. of pos.	Mounting style	Part Number
09	Through-hole	242 A 29020 X	09	Through-hole	241 A 29120 X
15	Through-hole	242 A 29030 X	15	Through-hole	241 A 29130 X
25	Through-hole	242 A 29040 X	25	Through-hole	241 A 29140 X
37	Through-hole	242 A 29050 X	37	Through-hole	241 A 29150 X
09	4-40 UNC Threaded insert	242 A 29180 X	09	4-40 UNC Threaded insert	241 A 29280 X
15	4-40 UNC Threaded insert	242 A 29190 X	15	4-40 UNC Threaded insert	241 A 29290 X
25	4-40 UNC Threaded insert	242 A 29200 X	25	4-40 UNC Threaded insert	241 A 29300 X
37	4-40 UNC Threaded insert	242 A 29210 X	37	4-40 UNC Threaded insert	241 A 29310 X
09	M3 Threaded insert	242 A 29340 X	09	M3 Threaded insert	241 A 29440 X
15	M3 Threaded insert	242 A 29350 X	15	M3 Threaded insert	241 A 29450 X
25	M3 Threaded insert	242 A 29360 X	25	M3 Threaded insert	241 A 29460 X
37	M3 Threaded insert	242 A 29370 X	37	M3 Threaded insert	241 A 29470 X

Capacitance 2 x 830 pF

SOCKET CONNECTOR			PLUG CONNECTOR		
No. of pos.	Mounting style	Part Number	No. of pos.	Mounting style	Part Number
09	Through-hole	242 A 29060 X	09	Through-hole	241 A 29160 X
15	Through-hole	242 A 29070 X	15	Through-hole	241 A 29170 X
25	Through-hole	242 A 29080 X	25	Through-hole	241 A 29180 X
37	Through-hole	242 A 29090 X	37	Through-hole	241 A 29190 X
09	4-40 UNC Threaded insert	242 A 29220 X	09	4-40 UNC Threaded insert	241 A 29320 X
15	4-40 UNC Threaded insert	242 A 29230 X	15	4-40 UNC Threaded insert	241 A 29330 X
25	4-40 UNC Threaded insert	242 A 29240 X	25	4-40 UNC Threaded insert	241 A 29340 X
37	4-40 UNC Threaded insert	242 A 29250 X	37	4-40 UNC Threaded insert	241 A 29350 X
09	M3 Threaded insert	242 A 29380 X	09	M3 Threaded insert	241 A 29480 X
15	M3 Threaded insert	242 A 29390 X	15	M3 Threaded insert	241 A 29490 X
25	M3 Threaded insert	242 A 29400 X	25	M3 Threaded insert	241 A 29500 X
37	M3 Threaded insert	242 A 29410 X	37	M3 Threaded insert	241 A 29510 X

Capacitance 2 x 1300 pF

SOCKET CONNECTOR			PLUG CONNECTOR		
No. of pos.	Mounting style	Part Number	No. of pos.	Mounting style	Part Number
09	Through-hole	242 A 29100 X	09	Through-hole	241 A 29200 X
15	Through-hole	242 A 29110 X	15	Through-hole	241 A 29210 X
25	Through-hole	242 A 29120 X	25	Through-hole	241 A 29220 X
37	Through-hole	242 A 29130 X	37	Through-hole	241 A 29230 X
09	4-40 UNC Threaded insert	242 A 29260 X	09	4-40 UNC Threaded insert	241 A 29360 X
15	4-40 UNC Threaded insert	242 A 29270 X	15	4-40 UNC Threaded insert	241 A 29370 X
25	4-40 UNC Threaded insert	242 A 29280 X	25	4-40 UNC Threaded insert	241 A 29380 X
37	4-40 UNC Threaded insert	242 A 29290 X	37	4-40 UNC Threaded insert	241 A 29390 X
09	M3 Threaded insert	242 A 29420 X	09	M3 Threaded insert	241 A 29520 X
15	M3 Threaded insert	242 A 29430 X	15	M3 Threaded insert	241 A 29530 X
25	M3 Threaded insert	242 A 29440 X	25	M3 Threaded insert	241 A 29540 X
37	M3 Threaded insert	242 A 29450 X	37	M3 Threaded insert	241 A 29550 X