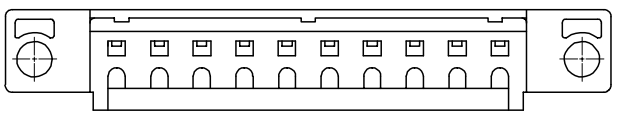
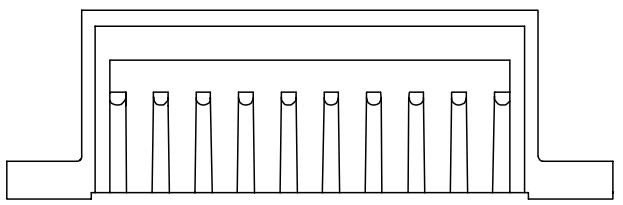
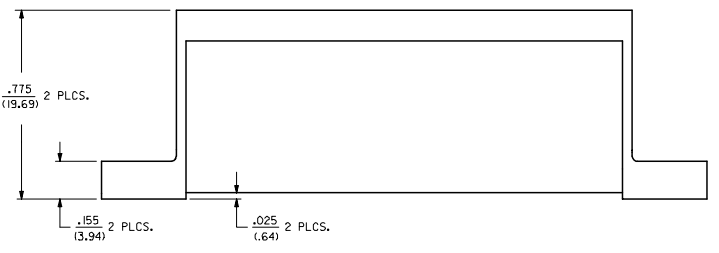
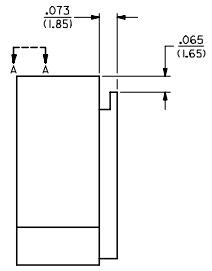
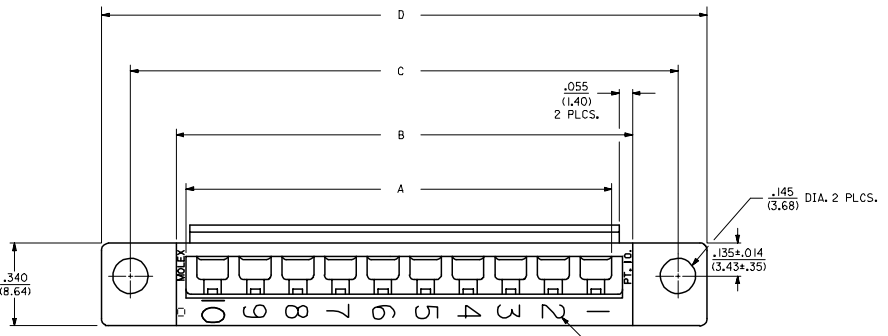


20 19 18 17 16 15 14 13 12 11 10 9 8 7 6 5 4 3 2 1

M L K J I H G F E D C B A

- NOTES:**
- △ THESE HOUSINGS ARE FOR USE WITH THE 1457-• TERMINALS AND MAY BE SUBDIVIDED BY USING THE 1461-K KEY.
  - △ THE HOUSINGS ARE ONLY AVAILABLE IN 5, 10, 15, AND 20 CIRCUIT SIZES.
  - △ PRODUCT SPECIFICATION PS 50-36 APPLIES.
  - △ THESE HOUSINGS CONFORM TO U.L. AND C.S.A. REQUIREMENTS.
  - △ .060/(1.52) HIGH RAISED NUMERALS.
  - △ .125/(3.18) HIGH RECESSED NUMERALS ON A MATTE BACKGROUND.
  - △ .09/(2.3) HIGH INK STAMPED NUMERALS.
- B. PACKAGE PER PK-1461-100.



4	01
3	0
2	01
1	0
SHT REV	

<b>MODIFY CORE OUTS</b> EC NO: UCP2005-2756 DRWNS: BARRA 2005/09/29 CHK: BARKER 2005/10/18 APPR: SHILLER 2005/10/12	QUALITY SYMBOLS	GENERAL TOLERANCES (UNLESS SPECIFIED)	DIMENSION STYLE IN/MM	SCALE 4:1	DESIGN UNITS INCH	THIRD ANGLE PROJECTION
	▽=0	4 PLACES ± --- ± ---	mm INCH	DRAWN BY AFG	DATE 9/1/02/18	TITLE HOUSING, COMMONING
	▽=0	3 PLACES ± --- ± .010		CHECKED BY RHR	DATE 9/1/02/18	[.025/(.64) OFFSET]
		2 PLACES ± 0.25 ± .014		APPROVED BY GWF	DATE 9/1/02/18	MOLEX INCORPORATED
	1 PLACE ± 0.35 ± ---	ANGULAR ±1/2°		MATERIAL NO.	DOCUMENT NO. SD-1461-*	SHEET NO. 1 OF 4
		DRAFT WHERE APPLICABLE MUST REMAIN WITHIN DIMENSIONS	SIZE D	THIS DRAWING CONTAINS INFORMATION THAT IS PROPRIETARY TO MOLEX INCORPORATED AND SHOULD NOT BE USED WITHOUT WRITTEN PERMISSION		

19 18 17 16 15 14 13 12 11 10 9 8 7 6 5 4 3 2 1

PART NO.	ENG. NO.	NO. CKTS.	DIMENSIONS				CIRCUIT NUMERALS
			DIM. A	DIM. B	DIM. C	DIM. D	
07-01-7201	1461-20	20	3.50 (88.9)	3.63 (92.2)	4.00 (101.6)	4.24 (107.7)	11 THRU 20
07-01-7151	1461-15	15	2.62 (66.5)	2.75 (69.9)	3.13 (79.5)	3.37 (85.6)	21 THRU 30
07-01-7101	1461-10	10	1.750 (44.45)	1.875 (47.63)	2.250 (57.15)	2.49 (63.2)	16 THRU 30
07-01-7051	1461-5	5	.875 (22.23)	1.000 (25.40)	1.375 (34.93)	1.615 (41.02)	46 THRU 60

SPECIAL NUMBERED HOUSINGS CHART							
PART NO.	ENG. NO.	NO. CKTS.	CIRCUIT NUMERALS	1	2	3	4
07-01-7202	1461-20-1	20	21 THRU 40				
07-01-7203	1461-20-2	20	41 THRU 60				
07-01-7204	1461-20-3	20	61 THRU 80				

INK STAMPED HOUSINGS								
BEFORE INK STAMP	AFTER INK STAMP	BEFORE INK STAMP	AFTER INK STAMP	NO. CKTS.	DIM. A	DIM. B	DIM. C	DIM. D
007-01-7206	1461-20B	007-01-7207	1461-20C	20	3.50 (88.9)	3.63 (92.2)	4.00 (101.6)	4.24 (107.7)
007-01-7156	1461-15B	007-01-7157	1461-15C	15	2.62 (66.5)	2.75 (69.9)	3.13 (79.5)	3.37 (85.6)
007-01-7106	1461-10B	007-01-7107	1461-10C	10	1.750 (44.45)	1.875 (47.63)	2.250 (57.15)	2.49 (63.2)
007-01-7056	1461-5B	007-01-7057	1461-5C	5	.875 (22.23)	1.000 (25.40)	1.375 (34.93)	1.615 (41.02)

SPECIAL INK STAMPED HOUSINGS CHART							
BEFORE INK STAMP	AFTER INK STAMP	NO. CKTS.	CIRCUIT NUMERALS	1	2	3	4
007-01-7206	1461-20B	007-01-7208	1461-20-1C	20	21 THRU 40		
		007-01-7209	1461-20-2C	20	41 THRU 60		
		007-01-7201	1461-20-3C	20	61 THRU 80		

LINE	REV	DESCRIPTION	DATE	BY	CHKD	APP'D
1		ISSUED FOR MANUFACTURE				
2		REVISED				
3		REVISED				
4		REVISED				
5		REVISED				
6		REVISED				
7		REVISED				
8		REVISED				
9		REVISED				
10		REVISED				
11		REVISED				
12		REVISED				
13		REVISED				
14		REVISED				
15		REVISED				
16		REVISED				
17		REVISED				
18		REVISED				
19		REVISED				
20		REVISED				

**HOUSING COMPANY**  
 1025/1484 OFF SET 1  
 30-1461  
 03/22/91  
 1025/1484 OFF SET 1  
 30-1461  
 03/22/91