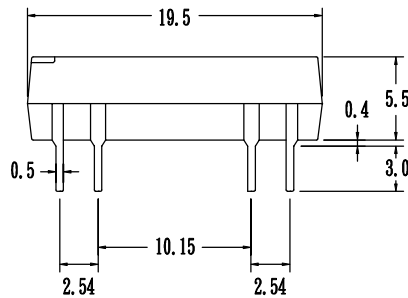
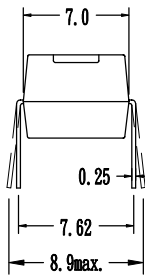
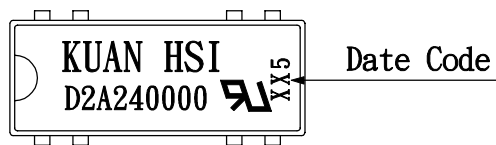


PRODUCT SPECIFICATION

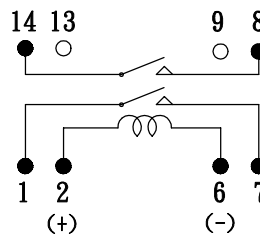
COSMO ELECTRONICS CORPORATION	REED RELAY: D2A240000	SHEET 1 OF 2
---	---------------------------------	--------------

1. OUTSIDE DIMENSION : UNIT (mm)



TOLERANCE : $\pm 0.1\text{mm}$

2. SCHEMATIC : TOP VIEW



PRODUCT SPECIFICATION

COSMO ELECTRONICS CORPORATION	REED RELAY: D2A240000	SHEET 2 OF 2
---	---------------------------------	--------------

3.0 COIL RATINGS: (AT 20°C)

3.1 Coil resistance	2150	Ω (±10%)
3.2 Nominal coil current	24	VDC
3.3 Maximum Continuous voltage	28	VDC
3.4 Must operate	18	VDC
3.5 Must release	2.4	VDC
3.6 Rated current	11.1	mA

4.0 ELECTRONICAL CHARACTERISTICS:

4.1 Contact resistance	100	mΩ (max)
4.2 Operate time	0.5	ms (max)
4.3 Bounce time	0.5	ms (max)
4.4 Release time	0.2	ms (max)
4.5 Insulation resistance (100 VDC open contact)	10 ¹¹	Ω (min)
4.6 Power	10	VA (max)
4.7 Switching voltage	200	VDC (max)
4.8 Switching current	0.5	A (max)
4.9 Carry current	1.0	A (max)
4.10 Breakdown voltage (across open contact)	250	VDC (min)
(between coil & contact)	500	VDC (min)
4.11 Life expectancy (signal level)	10 ⁸	
4.12 Operating temp	-40 to 85°C	
4.13 Storage temp	-50 to 125°C	
4.14 Resonant frequency	3.5	KHZ
4.15 Vibration (10-2000HZ)	20	g (max)
4.16 Minimum permissible load	100	mVDC 10uA