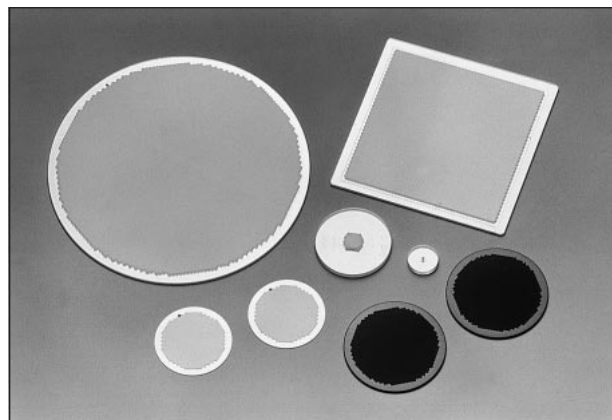


For Liquid/Gas Filter, Differential Pressure Pumping, Orifice for Mass Spectroscopy, Light/X-ray Collimator

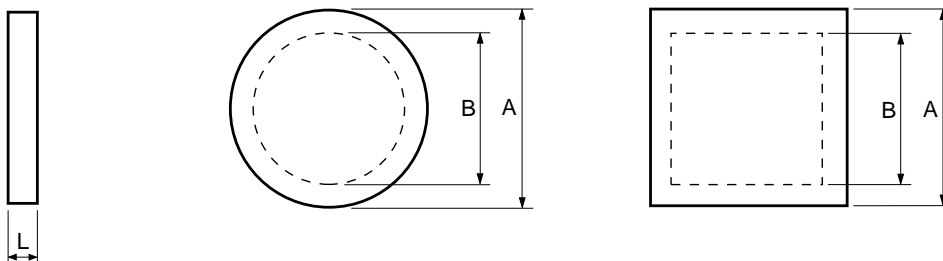
FEATURES

- Uniform capillary diameter
- Possible to make liquid laminar flow
- Possible to give charge particle or molecule directivity
- Good mechanical strength
- High heat resistance (430°C Max.)
- Possible to collimate light



Capillary plate is a circular or rectangular plate where glass capillaries of channel diameter 6 to 25 μm are regularly bundled in parallel. Depending on its channel diameter or thickness, capillary plate can control flow speed or flow quantity of gas or liquid and can be used as a gas filter or a window material for differential pressure pumping. Besides it can give directivity to charged particle and molecule, and can be also used as a light or X-ray collimator. Our capillary plate has as high as over 55 % open area ratio.

DIMENSIONAL OUTLINES AND SPECIFICATIONS (Unit:mm)



TMCPA0070EA

Type No.	Size A	Effective Area B (mm)	Channel Diameter D (μm)	Thickness L (mm)	L/D
J5022-01	$\phi 5$	$\phi 0.8$	12	1.0	83
J5022-09	$\phi 25$	$\phi 20$	6	1.0	167
J5022-11	$\phi 25$	$\phi 20$	10	0.4	40
J5022-16	$\phi 33$	$\phi 27$	10	1.0	100
J5022-21	$\phi 87$	$\phi 77$	25	1.0	40
J5022-19	60 × 60	53 × 53	20	1.0	50