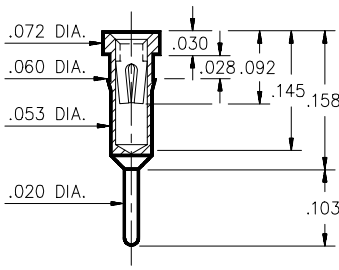
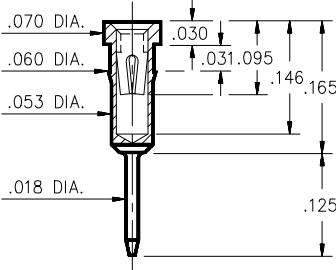


4011



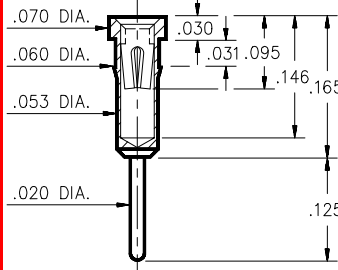
4011-0-15-XX-30-XX-04-0
Press-fit in .057 mounting hole

1801



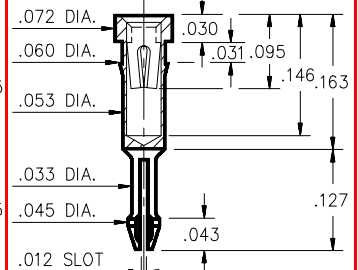
1801-0-15-XX-30-XX-04-0
Press-fit in .057 mounting hole
Shell is Ph. Br. Alloy 544 (B2)

1001



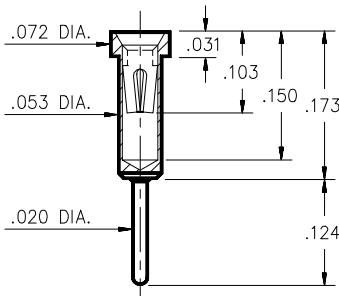
1001-0-15-XX-3X-XX-04-0
Press-fit in .057 mounting hole

0156



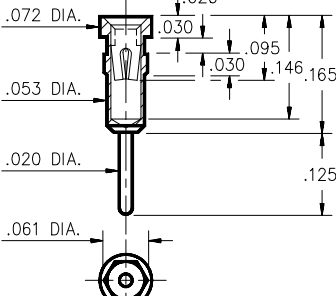
0156-0-18-XX-30-XX-04-0
Self-retention socket pin.038-.043 hole prior to soldering

0255



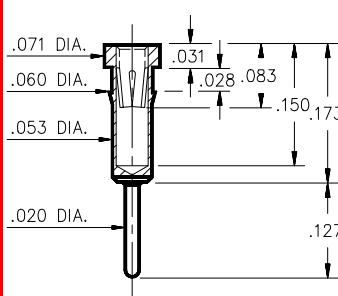
0255-0-15-XX-30-XX-04-0
Solder mount in .022 min. mounting hole

1109



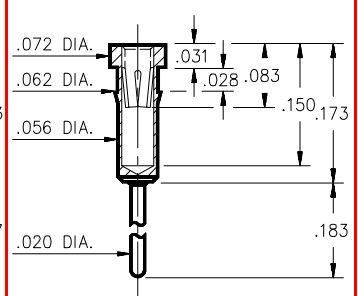
1109-0-15-XX-30-XX-04-0
Hex press-fit in .057 plated thru hole

8607



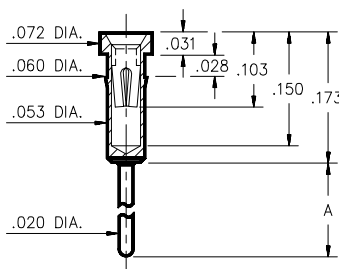
8607-0-15-XX-32-XX-04-0
Press-fit in .057 mounting hole

8180



8180-0-15-XX-32-XX-04-0
Press-fit in .059 mounting hole

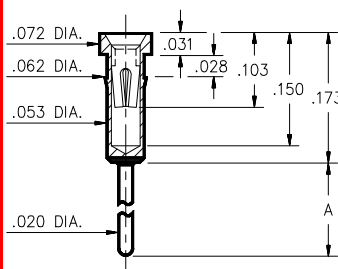
0132/0134/0135/0470



0XXX-0-15-XX-32-XX-04-0
Press-fit in .057 mounting hole

Basic Part Number	Length A
0132-0	.273
0134-0	.170
0135-0	.183
0470-0	.127

0133/0147



01XX-0-15-XX-30-XX-04-0
Press-fit in .059 mounting hole

Basic Part Number	Length A
0133-0	.382
0147-0	.563

SPECIFICATIONS

SHELL MATERIAL:
Brass Alloy 360, 1/2 Hard

CONTACT MATERIAL:
Beryllium Copper Alloy 172, HT

DIMENSION IN INCHES
TOLERANCES ON:
LENGTHS: ± .005
DIAMETERS: ± .002
ANGLES: ± 2°

ORDER CODE: XXXX - 0 - 1X - XX - 3X - XX - X4 - 0

BASIC PART # →

SPECIFY SHELL FINISH →

SPECIFY CONTACT FINISH →

SELECT CONTACT →

30 OR # 32 CONTACT (DATA ON PAGES 157 & 158)

02 100μ" TIN/LEAD OVER NICKEL
14 10μ" GOLD OVER NICKEL
27 30μ" GOLD OVER NICKEL