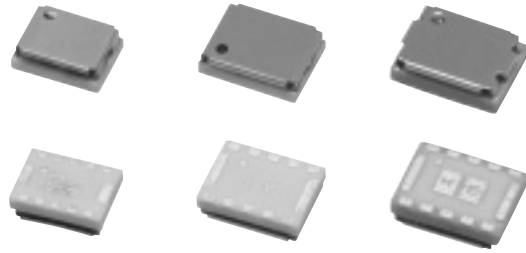


### Multilayer Antenna Switch Filters

Series: **L**

Type: **TC** (5.4×4.0×1.7 mm)  
**DC** (4.5×3.2×1.65 mm)



Lightweight, miniaturized package with low insertion loss and high isolation characteristics.

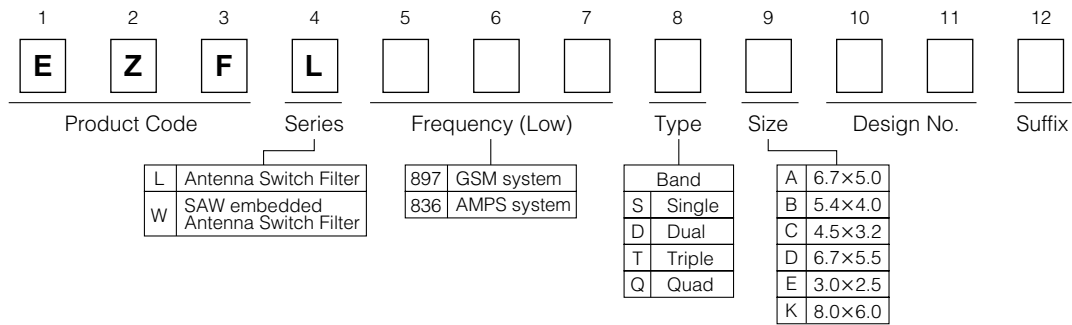
#### ■ Features

- Miniaturized
- Built-in LPF
- Reflow soldering compatible
- Applicable to LGA (Land Grid Array)

#### ■ Recommended Applications

- Dual band telephones (EGSM/DCS and GSM850/PCS)
- Cellular telephones (Triple band (EGSM/DCS/PCS))

#### ■ Explanation of Part Numbers



#### ■ Ratings

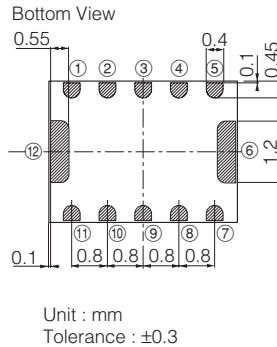
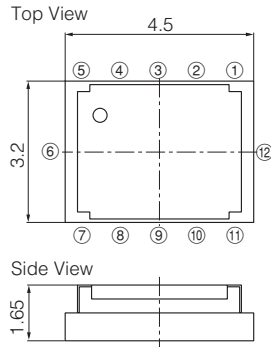
Item	Ratings
Operating Temperature Range	-10 to 70 °C
Storage Temperature Range	-35 to 85 °C
Input/Output Impedance	50 Ω

### ■ Characteristics

System	Part No.	CH	Center Frequency (MHz)	Passband Width (MHz)	Insertion loss (at 25 °C)	Attenuation (TX→ANT) (dB)	Isolation (dB)	Input power (dBm)
EGSM/DCS	EZFL897DC21C	EGSM-Tx	897.5	±17.5	1.4	30 (1760-1830 MHz) 25 (2640-2745 MHz)	20 min G-Tx=>G-Rx 20 min G-Tx=>Rx	35 max.
		EGSM-Rx	942.5	±17.5	1.1	-	-	-
		DCS-Tx	1747.5	±37.5	1.4	15 (880-915 MHz) 25 (3420-3570 MHz)	20 min D-Tx=>D-Rx 20 min D-Tx=>G-Rx	32 max.
		DCS-Rx	1842.5	±37.5	1.1	-	-	-
GSM850/PCS	EZFL836DC21C	GSM850-Tx	836.5	±12.5	1.4	30 (1648-1698 MHz) 25 (2472-2547 MHz)	20 min G-Tx=>G-Rx 20 min G-Tx=>D-Rx	35 max.
		GSM850-Rx	881.5	±12.5	1.1	-	-	-
		PCS-Tx	1880	±30.0	1.4	15 (824-849 MHz) 25 (3700-3820 MHz)	20 min D-Tx=>D-Rx 20 min D-Tx=>G-Rx	32 max.
		PCS-Rx	1960	±30.0	1.1	-	-	-
EGSM/DCS/PCS	EZFL897TB11C	EGSM-Tx	897.5	±17.5	1.3	25 (1760-1830 MHz) 25 (2640-2745 MHz)	20 min G-Tx=>G-Rx 20 min G-Tx=>D-Rx 20 min G-Tx=>P-Rx	35 max.
		EGSM-Rx	942.5	±17.5	1.1	-	-	-
		DCS-Tx	1747.5	±37.5	1.7	25 (3420-3570 MHz) 25 (5130-5355 MHz)	20 min D/P-Tx=>D-Rx 15 min D/P-Tx=>G-Rx 20 min D/P-Tx=>P-Rx	33 max.
		DCS-Rx	1842.5	±37.5	1.4	-	-	-
		PCS-Tx	1880	±30.0	1.7	25 (3700-3820 MHz) 25 (5550-5730 MHz)	20 min D/P-Tx=>D-Rx 15 min D/P-Tx=>G-Rx	33 max.
		PCS-Rx	1960	±30.0	1.7	-	20 min D/P-Tx=>P-Rx	-
	EZFL897TB31C	EGSM-Tx	897.5	±17.5	1.20 max.	30.0 min. (1760-1830 MHz) 25.0 min. (2640-2745 MHz)	20 min G-Tx=>G-Rx 20 min G-Tx=>D-Rx	35 max.
		EGSM-Rx	942.5	±17.5	1.00 max.	-	-	11 max.
		DCS-Tx	1747.5	±37.5	1.55 max.	30.0 min. (3420-3570 MHz) 25.0 min. (5130-5355 MHz)	15 min D/P-Tx=>G-Rx 20 min D/P-Tx=>D-Rx	35 max.
		DCS-Rx	1842.5	±37.5	1.20 max.	-	-	11 max.
		PCS-Tx	1880	±30.0	1.55 max.	30.0 min. (3700-3820 MHz) 25.0 min. (5550-5730 MHz)	15 min D/P-Tx=>G-Rx 20 min D/P-Tx=>P-Rx	32 max.
		PCS-Rx	1960	±30.0	1.50 max.	-	-	1 max.

■ Dimensions in mm (not to scale)

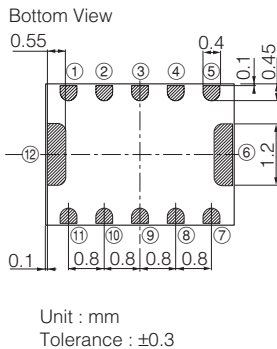
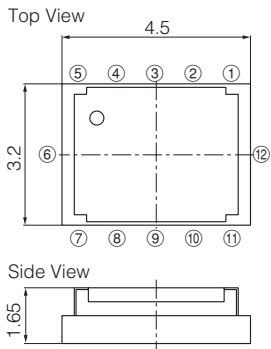
● EZFL897DC21C



Terminal No.	Terminal Name
①	DCS-Rx
②	GND
③	ANT
④	GND
⑤	Vc1
⑥	GND
⑦	DCS-Tx
⑧	Vc2
⑨	EGSM-Tx
⑩	GND
⑪	EGSM-Rx
⑫	GND

Unit : mm  
Tolerance : ±0.3

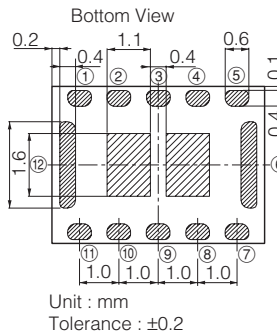
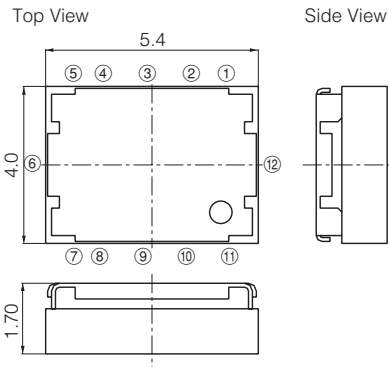
● EZFL836DC21C



Terminal No.	Terminal Name
①	PCS-Rx
②	GND
③	ANT
④	GND
⑤	Vc1
⑥	GND
⑦	PCS-Tx
⑧	Vc2
⑨	GSMB50-Tx
⑩	GND
⑪	GSMB50-Rx
⑫	GND

Unit : mm  
Tolerance : ±0.3

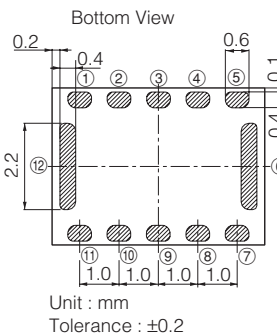
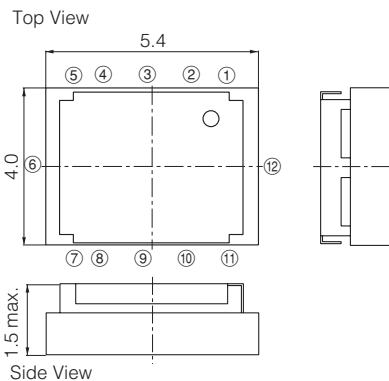
● EZFL897TB11C



Terminal No.	Terminal Name
①	DCS Rx
②	Vc1(PCS Rx)
③	PCS Rx
④	Vc2(GSM Tx)
⑤	GSM Rx
⑥	GND
⑦	ANT
⑧	Vc3(DCS/PCS Tx)
⑨	DCS/PCS Tx
⑩	GND
⑪	GSM Tx
⑫	GND

Unit : mm  
Tolerance : ±0.2

● EZFL897TB31C



Terminal No.	Terminal Name
①	DCS Rx
②	Vc1
③	PCS Rx
④	Vc2
⑤	DCS/PCS Tx
⑥	GND
⑦	GSM Tx
⑧	GND
⑨	ANT
⑩	Vc3
⑪	GSM Rx
⑫	GND

Unit : mm  
Tolerance : ±0.2