

# 5.0x7.0mm Surface Mount LVCMOS Clock Oscillator Series

# CONNOR WINFIELD



## Description

The Connor Winfield Xxxx - Series is a 5x7.5mm Surface Mount, LVCMOS, Fixed Frequency Crystal Controlled Oscillator (XO) designed for applications requiring tight frequency stability, wide temperature range and low jitter. Operating at 2.5V or 3.3V supply voltage, the Xxxx - Series provides an LVCMOS Output with enable / disable function. The surface mount package is designed for high-density mounting and is optimum for mass production.



## Features:

### Model Xxxx - Series

5.0 x7.0mm Surface Mount Package

2.5V or 3.3V Operation

LVCMOS Output Logic

Frequency Stabilities Available:

X14x / X24x / X34x / X44x: +/-20ppm

X11x / X21x / X31x / X41x: +/-25ppm

X12x / X22x / X32x / X42x: +/-50ppm

X13x / X23x / X33x / X43x: +/-100ppm

Temperature Ranges Available:

X1xx Series: 0 to 70°C

X2xx Series: -40 to 85°C

X3xx Series: 0 to 85°C

X4xx Series: -20 to 70°C

Low Jitter <1ps RMS

Tri-State Enable/Disable

Tape and Reel Packaging

RoHS Compliant / Lead Free

## Model Specifications

### ABSOLUTE MAXIMUM RATINGS

TABLE 1

PARAMETER	UNITS	MINIMUM	NOMINAL	MAXIMUM	UNITS	NOTE
Storage Temperature		-55	-	125	°C	
Supply Voltage	(Vcc)	-0.5	-	5.0	Vdc	

### OPERATING SPECIFICATIONS

TABLE 2

PARAMETER		MINIMUM	NOMINAL	MAXIMUM	UNITS	NOTE
Frequency Range	(Fo)	40	-	225	MHz	
Total Frequency Tolerance		(See Table 9 for full part number)				
Model Xx4x (See Table 9)		-20	-	20	ppm	1
Model Xx1x (See Table 9)		-25	-	25	ppm	1
Model Xx2x (See Table 9)		-50	-	50	ppm	1
Model Xx3x (See Table 9)		-100	-	100	ppm	1
Operating Temperature Range						
Model X1xx (See Table 9)		0	-	70	°C	
Model X2xx (See Table 9)		-40	-	85	°C	
Model X3xx (See Table 9)		0	-	85	°C	
Model X4xx (See Table 9)		-20	-	70	°C	
Supply Voltage	(Vcc)					
Model Xxx2 (See Table 9)		2.375	2.500	2.625	Vdc	
Model Xxx3 (See Table 9)		3.135	3.3	3.465	Vdc	
Supply Current	(Icc)					
	40 to 79.999 MHz	-	-	15	mA	
	80 to 89.999 MHz	-	-	26	mA	
	90 to 124.999 MHz	-	-	36	mA	
	125 to 164.999 MHz	-	-	46	mA	
	165 to 225 MHz	-	-	61	mA	

### INPUT CHARACTERISTICS

TABLE 3

PARAMETER		MINIMUM	NOMINAL	MAXIMUM	UNITS	NOTE
Enable Voltage	(High) (Vih)	0.7Vcc	-	-	Vdc	2
Disable Voltage	(Low) (Vil)	-	-	0.3Vcc	Vdc	2
Enable Time		-	-	2	ms	
Disable Time		-	-	200	ns	
Output Disable Current (Standby Current)	(Icc)	-	-	10	uA	

### LVCMOS OUTPUT CHARACTERISTICS

TABLE 4

PARAMETER		MINIMUM	NOMINAL	MAXIMUM	UNITS	NOTE
LOAD		-	-	15	pF	
Voltage	(High) (Voh)	Vcc-0.4	-	-	Vdc	
	(Low) (Vol)	-	-	0.4	Vdc	
Current	(High) (Ioh)	-8	-	-	mA	
	(Low) (Iol)	-	-	8	mA	
Duty Cycle at 50% of Vcc		45	50	55	%	
Rise / Fall Time 10% to 90%		-	1	2	ns	
Start-Up Time		-	-	2	ms	
Jitter (BW=10Hz to 20MHz)		-	-	5	ps RMS	
Jitter (BW=12kHz to 20MHz)		-	-	1	ps RMS	
Jitter: Peak to Peak (BW=10Hz to 20MHz)		-	-	25	ps pk tp pk	
SSB Phase Noise at 10Hz offset		-	-60	-	dBc/Hz	
SSB Phase Noise at 100Hz offset		-	-90	-	dBc/Hz	
SSB Phase Noise at 1KHz offset		-	-125	-	dBc/Hz	
SSB Phase Noise at 10KHz offset		-	-140	-	dBc/Hz	
SSB Phase Noise at 100KHz offset		-	-145	-	dBc/Hz	

Specifications subject to change without notice. All dimensions in inches. © Copyright 2007 The Connor-Winfield Corporation

2111 Comprehensive Drive

Aurora, Illinois 60505

Phone: 630-851-4722

Fax: 630-851-5040

[www.conwin.com](http://www.conwin.com)

US Headquarters:

630-851-4722

European Headquarters:

+353-61-472221



Bulletin **Sm118**

Page **1 of 2**

Revision **06**

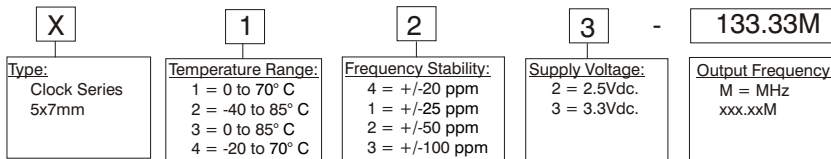
Date **13 Nov 2007**



**Notes**

- 1) Inclusive of calibration @ 25°C, frequency vs. temperature stability, supply voltage change, load change, shock and vibration, 10 years aging.
- 2) When the oscillator is disabled, the outputs are at High Impedance. Output is enabled with no connection on pad 1.

**Ordering Information**



Example: X123-133.33M = LVC MOS Clock, 0 to 70°C, ±50ppm, 3.3V @ 133.33 MHz

**Package Characteristics**

Package	Ceramic Surface Mount Package.
---------	--------------------------------

**Environmental Characteristics**

Vibration:	Vibration per Mil Std 883E Method 2007.3 Test Condition A
Shock:	Mechanical Shock per Mil Std 883E Method 2002.4 Test Condition B.
Soldering:	SMD product suitable for Convection Reflow soldering. Peak temperature 260°C. Maximum time above 220°C, 60 seconds.
Solderability	Solderability per Mil Std 883E Method 2003

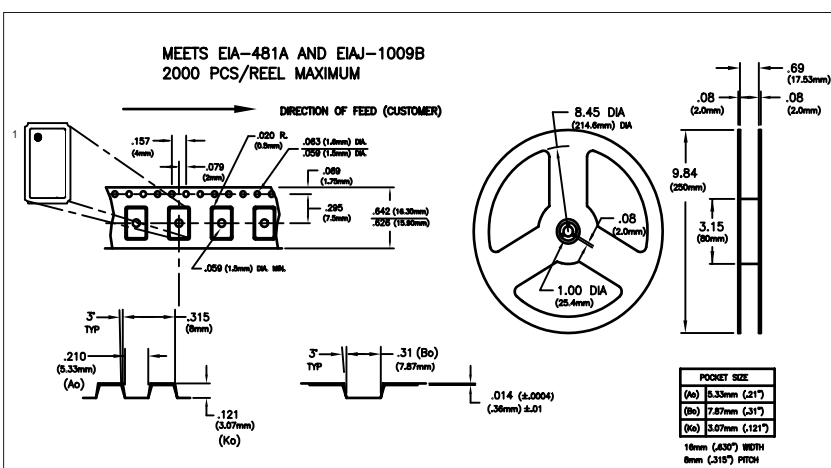
**Pad Connections - Enable / Disable Function**

Pad	Connection	Enable / Disable Function (Pad 1)	Output
1	Enable/Disable	High or Open	Enable
2	Ground	Low	Disable (High Impedance)
3	Output		
4	Vcc		

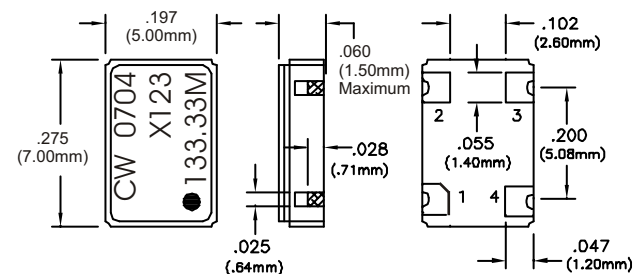
**Model Matrix**

Frequency Tolerance ±20ppm	Frequency Tolerance ±25ppm	Frequency Tolerance ±50ppm	Frequency Tolerance ±100ppm	Supply Voltage	Temperature Range
X142	X112	X122	X132	2.5Vdc	0 to 70°C
X242	X212	X222	X232	2.5Vdc	-40 to 85°C
X342	X312	X322	X332	2.5Vdc	0 to 85°C
X442	X412	X422	X432	2.5Vdc	-20 to 70°C
X143	X113	X123	X133	3.3Vdc	0 to 70°C
X243	X213	X223	X233	3.3Vdc	-40 to 85°C
X343	X313	X323	X333	3.3Vdc	0 to 85°C
X443	X413	X423	X433	3.3Vdc	-20 to 70°C

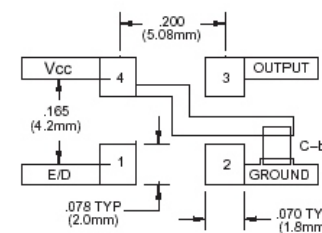
**Tape and Reel Specifications**



**Package Outline**

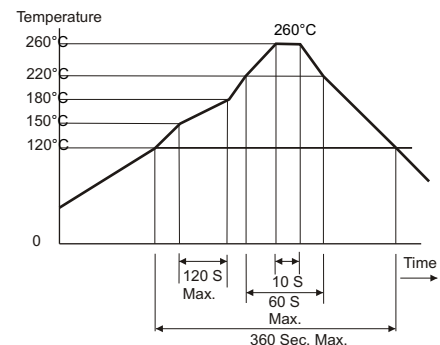


**Suggested Pad Layout**

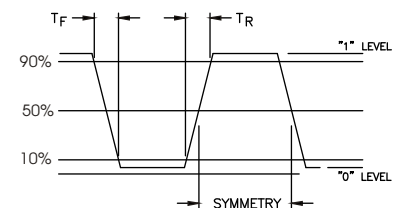


Bypass capacitor, C-by, should be ceramic capacitor ≥ .01µf.

**Solder Profile**



**LVC MOS Output Waveform**



US Headquarters: 630-851-4722  
European Headquarters: +353-61-472221

Bulletin	SM118
Page	2 of 2
Revision	06
Date	13 Nov 2007