

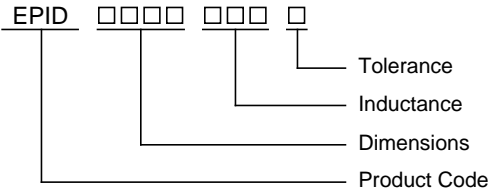


Applications :

Excellent for power line DC-DC conversion applications used in hard disk, notebook computers and other electronic equipment.

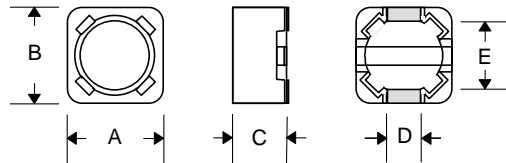


### Product Identification

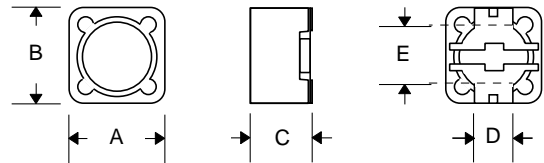


□ : Inductance Tolerance (J = 5%, K = 10%, M = 20%)

### Shape and Dimension



EPID0703/0704



EPID1204/1205/1207

### Package Dimensions

Type	A Inches Max. (mm Max.)	B Inches Max. (mm Max.)	C Inches Max. (mm Max.)	D Inches Typ. (mm Typ.)	E Inches Typ. (mm Typ.)
EPID0703	.287 (7.30)	.287 (7.30)	.138 (3.50)	.071 (1.80)	.197 (5.00)
EPID0704	.287 (7.30)	.287 (7.30)	.177 (4.50)	.071 (1.80)	.197 (5.00)
EPID1204	.472 (12.00)	.472 (12.00)	.197 (5.00)	.197 (5.00)	.299 (7.60)
EPID1205	.472 (12.00)	.472 (12.00)	.236 (6.00)	.197 (5.00)	.299 (7.60)
EPID1207	.472 (12.00)	.472 (12.00)	.315 (8.00)	.197 (5.00)	.299 (7.60)

### Electrical Characteristics (EPID0703 Type)

Part Number	Inductance ( $\mu$ H)	Test Frequency (KHz @ 0.1 V)	DC Resistance ( Max.)	Rated Current (Amps Max.)
EPID0703-100 □	10	1.0	0.072	1.68
EPID0703-120 □	12	1.0	0.098	1.52
EPID0703-150 □	15	1.0	0.13	1.33
EPID0703-180 □	18	1.0	0.14	1.20
EPID0703-220 □	22	1.0	0.19	1.07
EPID0703-270 □	27	1.0	0.21	0.96
EPID0703-330 □	33	1.0	0.24	0.91
EPID0703-390 □	39	1.0	0.32	0.77
EPID0703-470 □	47	1.0	0.36	0.76
EPID0703-560 □	56	1.0	0.47	0.68
EPID0703-680 □	68	1.0	0.52	0.61
EPID0703-820 □	82	1.0	0.69	0.57

Unless Otherwise Specified Dimensions are in Inches /mm  $\pm$  .010 /.25



### Electrical Characteristics (EPID0703 Type)

Part Number	Inductance (µH)	Test Frequency (KHz @ 0.1 V)	DC Resistance (Max.)	Rated Current (Amps Max.)
EPID0703-101 □	100	1.0	0.79	0.50
EPID0703-121 □	120	1.0	0.89	0.49
EPID0703-151 □	150	1.0	1.27	0.43
EPID0703-181 □	180	1.0	1.45	0.39
EPID0703-221 □	220	1.0	1.65	0.35
EPID0703-271 □	270	1.0	2.31	0.32
EPID0703-331 □	330	1.0	2.62	0.28
EPID0703-471 □	470	1.0	4.18	0.24
EPID0703-561 □	560	1.0	4.67	0.22
EPID0703-681 □	680	1.0	5.73	0.19
EPID0703-821 □	820	1.0	6.54	0.18
EPID0703-102 □	1000	1.0	9.44	0.16

### Electrical Characteristics (EPID0704 Type)

Part Number	Inductance (µH)	Test Frequency (KHz @ 0.1 V)	DC Resistance (Max.)	Rated Current (Amps Max.)
EPID0704-100 □	10	1.0	0.049	1.84
EPID0704-120 □	12	1.0	0.058	1.71
EPID0704-150 □	15	1.0	0.081	1.47
EPID0704-180 □	18	1.0	0.091	1.31
EPID0704-220 □	22	1.0	0.11	1.23
EPID0704-270 □	27	1.0	0.15	1.12
EPID0704-330 □	33	1.0	0.17	0.96
EPID0704-390 □	39	1.0	0.23	0.91
EPID0704-470 □	47	1.0	0.26	0.88
EPID0704-560 □	56	1.0	0.35	0.75
EPID0704-680 □	68	1.0	0.38	0.69
EPID0704-820 □	82	1.0	0.43	0.61
EPID0704-101 □	100	1.0	0.61	0.60
EPID0704-121 □	120	1.0	0.66	0.52
EPID0704-151 □	150	1.0	0.88	0.46
EPID0704-181 □	180	1.0	0.98	0.42
EPID0704-221 □	220	1.0	1.17	0.36
EPID0704-271 □	270	1.0	1.64	0.34
EPID0704-331 □	330	1.0	1.86	0.32
EPID0704-391 □	390	1.0	2.85	0.29
EPID0704-471 □	470	1.0	3.01	0.26
EPID0704-561 □	560	1.0	3.62	0.23
EPID0704-681 □	680	1.0	4.63	0.22
EPID0704-821 □	820	1.0	5.20	0.20
EPID0704-102 □	1000	1.0	6.00	0.18

### Electrical Characteristics (EPID1204 Type)

Part Number	Inductance (µH)	Test Frequency (KHz @ 0.1 V)	DC Resistance (Max.)	Rated Current (Amps Max.)
EPID1204-3R9 □	3.9	100	0.015	6.5
EPID1204-4R7 □	4.7	100	0.018	5.7
EPID1204-6R8 □	6.8	100	0.023	4.9
EPID1204-8R2 □	8.2	100	0.026	4.6
EPID1204-100 □	10	100	0.028	4.5
EPID1204-120 □	12	100	0.038	4.0
EPID1204-150 □	15	100	0.050	3.2
EPID1204-180 □	18	100	0.057	3.1
EPID1204-220 □	22	100	0.066	2.9
EPID1204-270 □	27	100	0.080	2.8
EPID1204-330 □	33	100	0.097	2.7
EPID1204-390 □	39	100	0.132	2.1
EPID1204-470 □	47	100	0.160	1.9
EPID1204-560 □	56	100	0.190	1.8
EPID1204-680 □	68	100	0.220	1.5
EPID1204-820 □	82	100	0.260	1.3
EPID1204-101 □	100	100	0.308	1.2
EPID1204-121 □	120	100	0.38	1.1
EPID1204-151 □	150	100	0.53	0.95
EPID1204-181 □	180	100	0.62	0.85
EPID1204-221 □	220	100	0.70	0.80
EPID1204-271 □	270	100	0.87	0.60
EPID1204-331 □	330	100	0.99	0.50



### Electrical Characteristics (EPID1205 Type)

Part Number	Inductance (µH)	Test Frequency (@ 0.1 V)	DC Resistance (Max.)	Rated Current (Amps Max.)
EPID1205-1R3 □	1.3	7.96 MHz	0.012	8.0
EPID1205-2R1 □	2.1	7.96 MHz	0.014	7.0
EPID1205-3R1 □	3.1	7.96 MHz	0.017	6.0
EPID1205-4R4 □	4.4	7.96 MHz	0.020	5.0
EPID1205-5R8 □	5.8	7.96 MHz	0.021	4.4
EPID1205-7R5 □	7.5	7.96 MHz	0.024	4.2
EPID1205-100 □	10	1.0 KHz	0.025	4.0
EPID1205-120 □	12	1.0 KHz	0.027	3.5
EPID1205-150 □	15	1.0 KHz	0.030	3.3
EPID1205-180 □	18	1.0 KHz	0.034	3.0
EPID1205-220 □	22	1.0 KHz	0.036	2.8
EPID1205-270 □	27	1.0 KHz	0.051	2.3
EPID1205-330 □	33	1.0 KHz	0.057	2.1
EPID1205-390 □	39	1.0 KHz	0.068	2.0
EPID1205-470 □	47	1.0 KHz	0.075	1.8
EPID1205-560 □	56	1.0 KHz	0.11	1.7
EPID1205-680 □	68	1.0 KHz	0.12	1.5
EPID1205-820 □	82	1.0 KHz	0.14	1.4
EPID1205-101 □	100	1.0 KHz	0.16	1.3
EPID1205-121 □	120	1.0 KHz	0.17	1.1
EPID1205-151 □	150	1.0 KHz	0.23	1.0
EPID1205-181 □	180	1.0 KHz	0.29	0.9
EPID1205-221 □	220	1.0 KHz	0.40	0.8
EPID1205-271 □	270	1.0 KHz	0.46	0.75
EPID1205-331 □	330	1.0 KHz	0.51	0.68
EPID1205-391 □	390	1.0 KHz	0.69	0.65
EPID1205-471 □	470	1.0 KHz	0.77	0.58
EPID1205-561 □	560	1.0 KHz	0.86	0.54
EPID1205-681 □	680	1.0 KHz	1.20	0.48
EPID1205-821 □	820	1.0 KHz	1.34	0.43
EPID1205-102 □	1000	1.0 KHz	1.53	0.40

### Electrical Characteristics (EPID1207 Type)

Part Number	Inductance (µH)	Test Frequency (KHz @ 0.1 V)	DC Resistance (Max.)	Rated Current (Amps Max.)
EPID1207-1R2 □	1.2	100	0.0070	9.80
EPID1207-2R4 □	2.4	100	0.0115	8.00
EPID1207-3R5 □	3.5	100	0.0135	7.50
EPID1207-4R7 □	4.7	100	0.0158	6.80
EPID1207-6R1 □	6.1	100	0.0176	6.60
EPID1207-7R6 □	7.6	100	0.0200	5.90
EPID1207-100 □	10	1.0	0.0216	5.40
EPID1207-120 □	12	1.0	0.0243	4.90
EPID1207-150 □	15	1.0	0.0270	4.50
EPID1207-180 □	18	1.0	0.0392	3.90
EPID1207-220 □	22	1.0	0.0432	3.60
EPID1207-270 □	27	1.0	0.0459	3.40
EPID1207-330 □	33	1.0	0.0648	3.00
EPID1207-390 □	39	1.0	0.0729	2.75
EPID1207-470 □	47	1.0	0.10	2.50
EPID1207-560 □	56	1.0	0.11	2.35
EPID1207-680 □	68	1.0	0.14	2.10
EPID1207-820 □	82	1.0	0.16	1.95
EPID1207-101 □	100	1.0	0.22	1.70
EPID1207-121 □	120	1.0	0.25	1.60
EPID1207-151 □	150	1.0	0.28	1.42
EPID1207-181 □	180	1.0	0.35	1.30
EPID1207-221 □	220	1.0	0.39	1.16
EPID1207-271 □	270	1.0	0.56	1.06
EPID1207-331 □	330	1.0	0.64	0.95
EPID1207-391 □	390	1.0	0.70	0.88
EPID1207-471 □	470	1.0	0.98	0.79
EPID1207-561 □	560	1.0	1.07	0.73
EPID1207-681 □	680	1.0	1.46	0.67
EPID1207-821 □	820	1.0	1.64	0.60
EPID1207-102 □	1000	1.0	1.82	0.55