

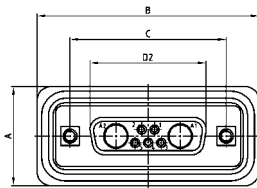
# IP67 COMBINATION D-SUB

Solder pin – Angled – .276"/7.0 mm – Precision machined contacts – Metal bracket

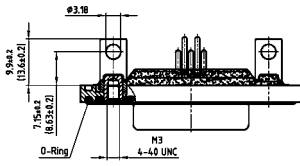


RoHS compliant – CSA listed, File No.: LR 115000-1 – UL listed, File No.: E202784

## SOCKET CONNECTOR

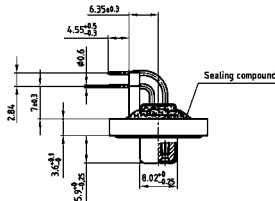


Shell size	A +0.2	B +0.2	C	D2 +0.25
1	21.10	39.40	25.00 <sup>+0.12/-0.13</sup>	16.46
2	21.10	47.70	33.30 <sup>+0.15/-0.10</sup>	24.79
3	21.10	61.40	47.04 <sup>+0.13</sup>	38.50
4	21.10	77.90	63.50 <sup>+0.13</sup>	54.96
5	23.90	75.50	61.10 <sup>+0.14/-0.11</sup>	52.55

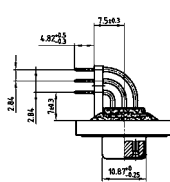


Dim. in ( ) = Shell size 5

Shell size 1-4



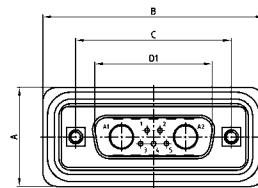
Shell size 5



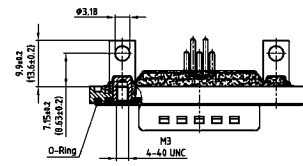
## DESCRIPTION

- Contacts: high power or coaxial contacts
- Mounting style:  
Metal bracket with 4-40 UNC threaded insert (M3 on request)
- Quality class 3 (also available in quality class 1)
- Shell: Brass tin plated (Stainless steel on request)
- Nickel plated die-cast frame  
(Black plastic frame on request)
- Suitable hex bolts are supplied loose

## PLUG CONNECTOR

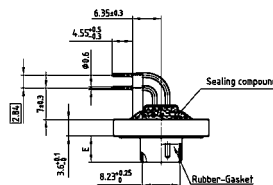


Shell size	A +0.2	B +0.2	C	D1 +0.25	E -0.30
1	21.10	39.40	25.00 <sup>+0.12/-0.13</sup>	16.79	5.82
2	21.10	47.70	33.30 <sup>+0.15/-0.10</sup>	25.12	5.82
3	21.10	61.40	47.04 <sup>+0.13</sup>	38.84	5.69
4	21.10	77.90	63.50 <sup>+0.13</sup>	55.30	5.69
5	23.90	75.50	61.10 <sup>+0.14/-0.11</sup>	52.68	5.69

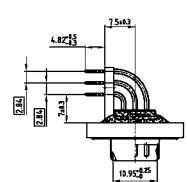


Dim. in ( ) = Shell size 5

Shell size 1-4



Shell size 5



## ORDER DATA

SOCKET CONNECTOR		High power contact		Part Number
Design	Mounting style 4-40 UNC			
5W1	PCB clip/Threaded insert	15 A		6 005W1SAU 59 R20 X
7W2	PCB clip/Threaded insert	15 A		6 007W2SAU 59 R20 X
11W1	PCB clip/Threaded insert	15 A		6 011W1SAU 59 R20 X
9W4	PCB clip/Threaded insert	15 A		6 009W4SAU 59 R20 X
13W3	PCB clip/Threaded insert	15 A		6 013W3SAU 59 R20 X
17W2	PCB clip/Threaded insert	15 A		6 017W2SAU 59 R20 X
21W1	PCB clip/Threaded insert	15 A		6 021W1SAU 59 R20 X
13W6	PCB clip/Threaded insert	15 A		6 013W6SAU 59 R20 X
17W5	PCB clip/Threaded insert	15 A		6 017W5SAU 59 R20 X
21WA4	PCB clip/Threaded insert	15 A		6 21WA4SAU 59 R20 X
25W3	PCB clip/Threaded insert	15 A		6 025W3SAU 59 R20 X
27W2	PCB clip/Threaded insert	15 A		6 027W2SAU 59 R20 X
24W7	PCB clip/Threaded insert	20 A		6 024W7SAU 81 R20 X
36W4	PCB clip/Threaded insert	20 A		6 036W4SAU 81 R20 X
43W2	PCB clip/Threaded insert	20 A		6 043W2SAU 81 R20 X
47W1	PCB clip/Threaded insert	20 A		6 047W1SAU 81 R20 X

PLUG CONNECTOR		High power contact		Part Number
Design	Mounting style 4-40 UNC			
5W1	PCB clip/Threaded insert	15 A		6 005W1PAU 59 R20 X
7W2	PCB clip/Threaded insert	15 A		6 007W2PAU 59 R20 X
11W1	PCB clip/Threaded insert	15 A		6 011W1PAU 59 R20 X
9W4	PCB clip/Threaded insert	15 A		6 009W4PAU 59 R20 X
13W3	PCB clip/Threaded insert	15 A		6 013W3PAU 59 R20 X
17W2	PCB clip/Threaded insert	15 A		6 017W2PAU 59 R20 X
21W1	PCB clip/Threaded insert	15 A		6 021W1PAU 59 R20 X
13W6	PCB clip/Threaded insert	15 A		6 013W6PAU 59 R20 X
17W5	PCB clip/Threaded insert	15 A		6 017W5PAU 59 R20 X
21WA4	PCB clip/Threaded insert	15 A		6 21WA4PAU 59 R20 X
25W3	PCB clip/Threaded insert	15 A		6 025W3PAU 59 R20 X
27W2	PCB clip/Threaded insert	15 A		6 027W2PAU 59 R20 X
24W7	PCB clip/Threaded insert	20 A		6 024W7PAU 81 R20 X
36W4	PCB clip/Threaded insert	20 A		6 036W4PAU 81 R20 X
43W2	PCB clip/Threaded insert	20 A		6 043W2PAU 81 R20 X
47W1	PCB clip/Threaded insert	20 A		6 047W1PAU 81 R20 X

For other contact configurations refer to part number creator.

Contact for shellsize 1-4	Code	Contact for shellsize 5	Code
High power 15 A; E=.075/1.90 mm =	59	High power 20 A; E=.110/2.85 mm =	81
High power 20 A; E=.110/2.85 mm =	73	High power 30 A; E=.150/3.75 mm =	85
High power 30 A; E=.126/3.20 mm =	74	High power 30 A; E=.126/3.20 mm =	82
High power 40 A; E=.150/3.75 mm =	75	High power 40 A; E=.150/3.75 mm =	77