

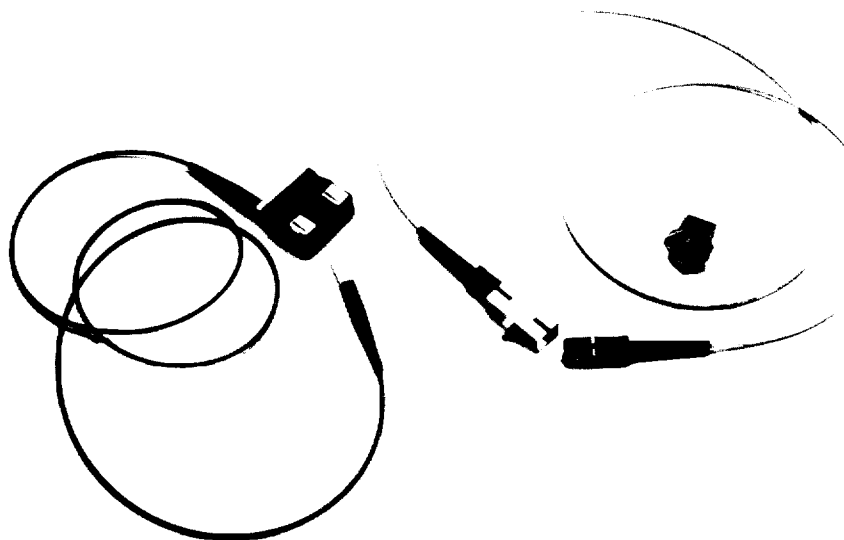
## FEATURES:

- Rectangular “Push-Pull” coupling mechanism
- Lightweight, compact plastic housing
- Designed and manufactured to NTT specifications
- Zirconia ceramic ferrule, Single-mode & Multimode

## APPLICATIONS:

- Subscriber networks
- Long and short-haul transmission systems
- Premise networks
- Advanced fiber optic systems

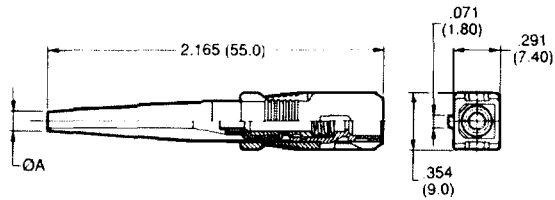
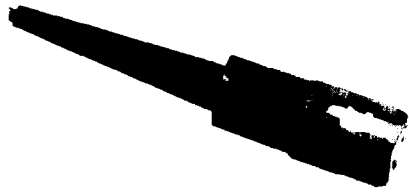
ITT Cannon’s FOSC series is designed and manufactured to stringent NTT specifications for Subscriber loop Connectors (SC). This product offers excellent performance and reliability, light weight, and unmatched packing density in a convenient “push-pull” design. The high performance zirconia ferrule floats within the housing, providing optical stability through environmental variations and cable stresses. The connectors are available in both single mode and multimode configurations, and are ideally suited for a wide variety of applications.



## Specifications

	Single Mode	Multimode (50/125)
Attenuation	· 0.5dB	· 0.3dB
Return Loss	· 26dB	· NA
Vibration (JIS C5961 6.1) 10 to 55Hz, 0.75mm peak 24 cycles along 3 axis	· 0.2dB change	· 0.2dB change
Shock (JIS C5961 6.2) 981m/sec <sup>2</sup> (100gs) 6 shocks along 3 axis	· 0.2dB change	· 0.2dB change
Durability (JIS C 5961 6.3)	500 cycles	500 cycles

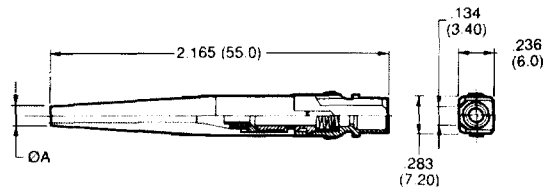
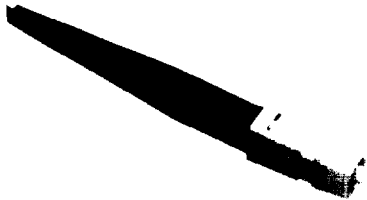
## Standard Density Housing (SC)



- Single mode or multimode available
- Push-Pull coupling mechanism for easy insertion and removal
- Terminates most industry standard cable designs
- Uses FOSC-A single port adapter

Model	Part Number	Cable Diameter (mm)	φA
FOSC-P2	086-4504-000	.079 (2.0)	.087 (2.2)
FOSC-P3	086-4505-000	.110 (2.8)	.118 (3.0)

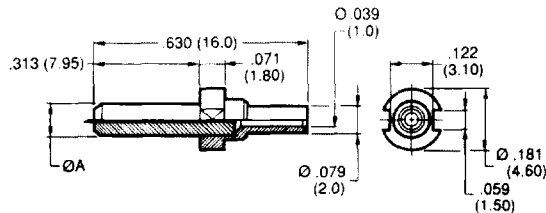
## High Density Housing (SC2)



- Single mode or multimode available
- Manual insertion. Uses FOSC-TR1 for removal
- Terminates most industry standard cable designs
- Uses FOSC-4A 4-port adapter array
- Easily converts to FOSC-A with addition of coupling sleeve

Model	Part Number	Cable Diameter (mm)	φA
FOSC2-P2	086-4506-000	.079 (2.0)	.087 (2.2)
FOSC2-P3	086-4507-000	.110 (2.8)	.118 (3.0)

## Zirconia Ferrule



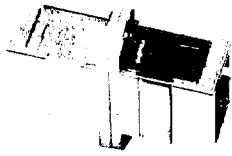
- High precision zirconia ceramic
- Easier to polish than alumina
- More compliant and durable

Singlemode Model	Part Number	Ferrule Hole Diameter (μm) ( ± 1/0 microns)
FOSC-FS3	304-4501-000	123
FOSC-FS4	304-4502-000	124
FOSC-FS5	304-4503-000	125
FOSC-FS6	304-4504-000	126
FOSC-FS7	304-4505-000	127
FOSC-FS8	304-4506-000	128

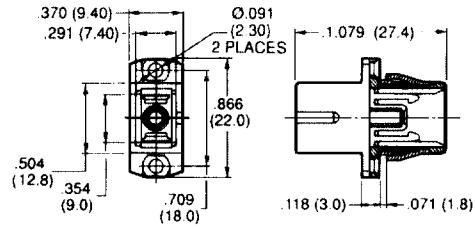
  

Multimode Model	Part Number	Ferrule Hole Diameter (μm) ( ± 1/0 microns)
FOSC-FM4	304-4507-000	124
FOSC-FM6	304-4508-000	126
FOSC-FM8	304-4509-000	128

## Single Port Adapter (SC)

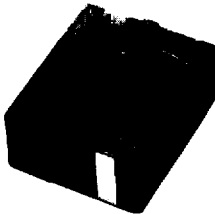


- Rugged zinc alloy construction
- Couples FOSC-P2 or FOSC-P3 connectors

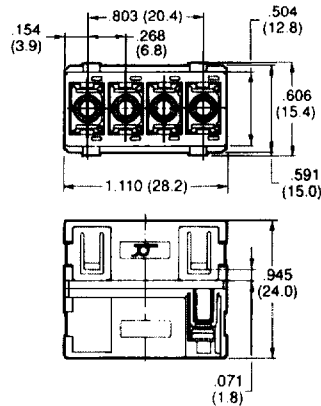


Model	Part Number	Materials
FOSC-A	127110-0002	Housing: Zinc Alloy Sleeve: Phosphor Bronze

## 4-Port Adapter Array (SC2)

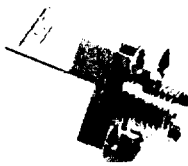


- Lightweight plastic construction
- Couples FOSC2-P2 or FOSC2-P3 connectors

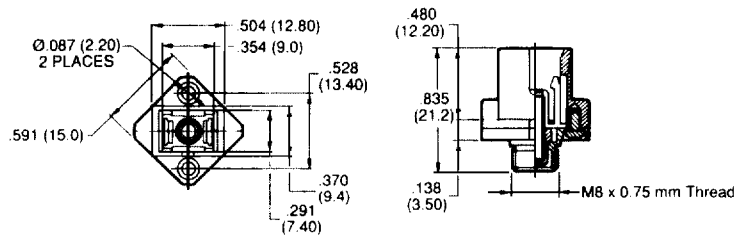


Model	Part Number	Materials
FOSC2-4A	127110-0003	Housing: Plastic (PBT) Sleeve: Phosphor Bronze

## SC-FC Converting Adapter



- Rugged zinc alloy construction
- Couples FOSC-P2 or FOSC-P3 connectors with NTT standard FC connectors



Model	Part Number	Materials
FOSC-FC-A	127110-0004	Housing: Zinc Alloy Sleeve: Phosphor Bronze

## Tooling

	Model	Part Number	Connector Type
Crimp Tools	FOSC-TC2	995-4521-029	FOSC-P2/FOSC2-P2
	FOSC-TC3	995-4521-030	FOSC-P3/FOSC2-P3
	FOSC-TC23	995-4521-034	ALL
SC2 Removal Tool	FOSC-TR1	995-4521-031	FOSC2-P2/FOSC2-P3