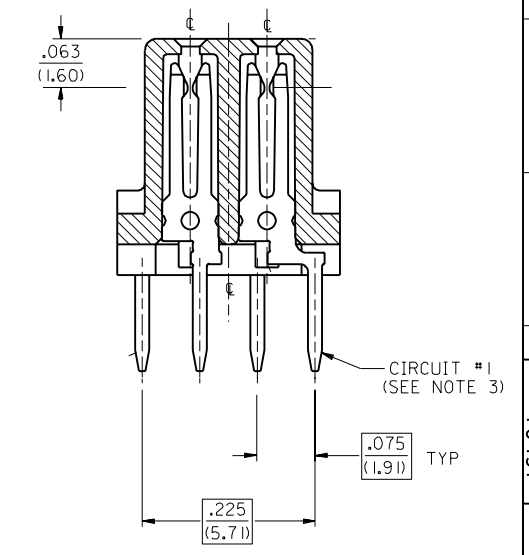
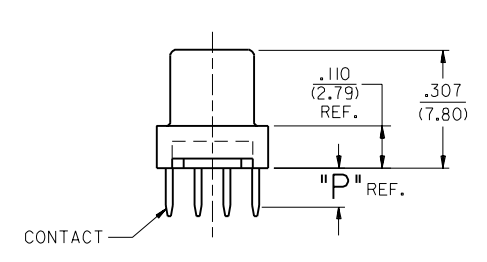
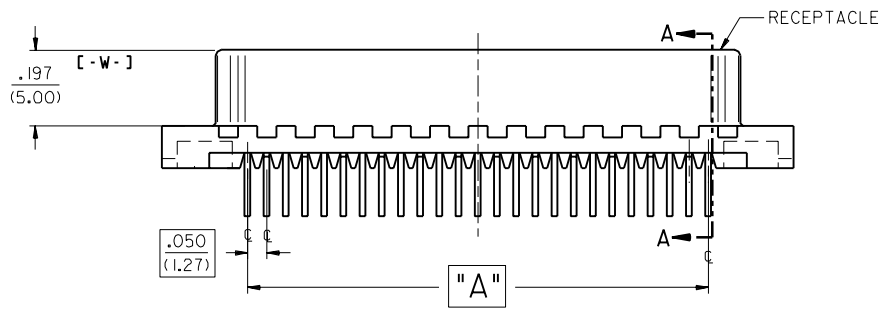
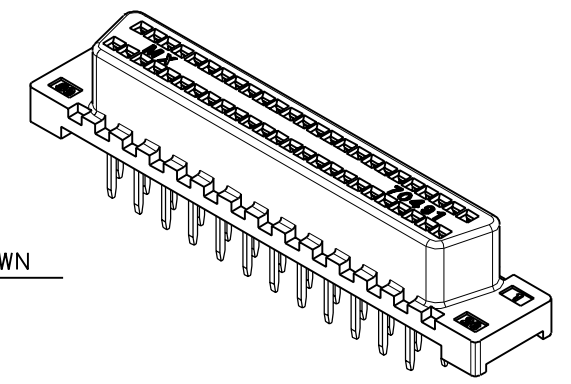
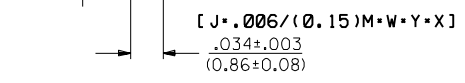
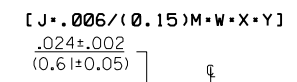
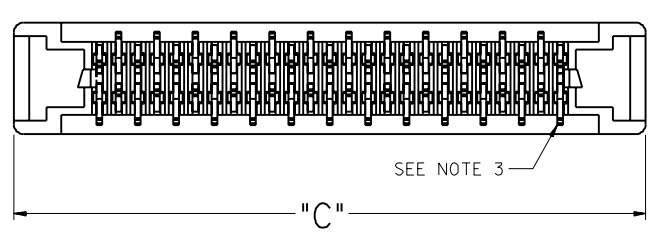


50 CIRCUIT SHOWN



SECTION "A-A"
SCALE 8:1



PIN WINDOW DETAIL
SCALE 10:1

NOTES :

- SEE SHEET 2 FOR PART NO.S AND CHARTED DIMENSIONS AND P.C. BOARD LAYOUT.
- 50 CIRCUIT SHOWN FOR ILLUSTRATION PURPOSES ONLY.
- TAIL PATTERN FIXED AT CIRCUIT NO. (1) POSITION FOR ALL CIRCUIT SIZES SHOWN.

2	F
1	F
MFG. SH.	REV.

F ADDED PIN WINDOW DETAIL PER ECR # U80357 J. LONG 97/08/01		D ADDED NEW PLATE PER ECR # U40232 2/17/94 JL/BOWEN		DIMENSIONS SHOWN (METRIC) INCH UNLESS OTHERWISE SPECIFIED TOLERANCES: ANGULAR $\pm 1/2^\circ$		REVISE ONLY ON CAD SYSTEM	
E CHANGED PACKAGING PER ECR # U51013 95/04/07 J. LONG		C ADDED .080 TAIL LENGTH PER ECR # U21545 10-20-92 JL/BOWEN		5 PLACE $\pm .010$ ---		TITLE SCSI SALES ALL-PLASTIC VERTICAL RECEPTACLE ASSEMBLY	
DI ADDED EDP NO. PER ECR # U40602 5/06/94 JL/BOWEN		B ADDED 68 CKT. PCB LAYOUT PER ECR # U21166 8/04/92 JL/BOWEN		2 PLACE \pm --- ± 0.25		MOLEX INCORPORATED U.S.A. SHEET NO. 1 of 2 DATE 06/17/92	
LTR. REVISIONS		LTR. REVISIONS		1 PLACE --- \pm ---		PART NO. SEE SHEET 2 DRWG. NO. SDA-70491-1	
				DRAFT WHERE APPLICABLE MUST REMAIN WITHIN DIMENSIONS		FILE NAME 57049111 DGN	
				DRAWN BY J. Long CHK'D BY DCB		THIS DRAWING CONTAINS INFORMATION THAT IS PROPRIETARY TO MOLEX INC. AND SHOULD NOT BE USED WITHOUT WRITTEN PERMISSION.	
				APP'D. BY J D SCALE 4:1		DIV. TC	

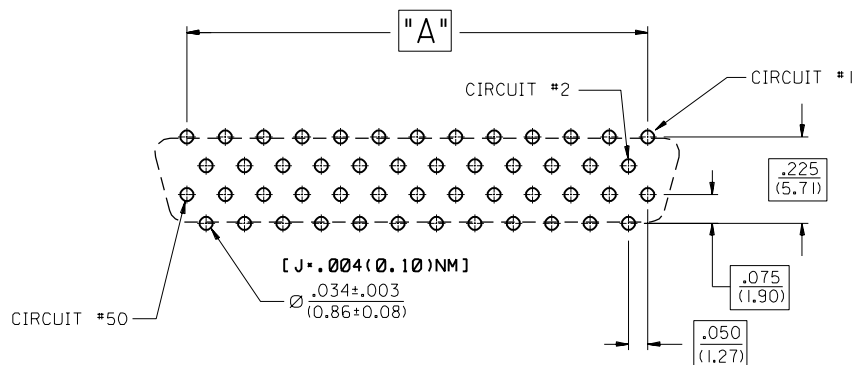
EDP NO.	ENG NO.	CKT. SIZE	PLATING	DIM. A		DIM. B		DIM. C		DIM. P TAIL LENGTH	RECOMMENDED PCB	
				INCH	MM	INCH	MM	INCH	MM		INCH	MM
015-87-0201	A-70491-1001	50	574	1.200	30.48	1.366	34.70	1.645	41.78	.125	.062 OR .093	1.57 OR 2.36
015-87-0202	A-70491-1002	50	842	1.200	30.48	1.366	34.70	1.645	41.78	.125	.062 OR .093	1.57 OR 2.36
015-87-0203	A-70491-1003	50	574	1.200	30.48	1.366	34.70	1.645	41.78	.165	.125	3.18
015-87-0204	A-70491-1004	50	842	1.200	30.48	1.366	34.70	1.645	41.78	.165	.125	3.18
015-87-0205	A-70491-1005	68	574	1.650	41.91	1.816	46.13	2.095	53.21	.125	.062 OR .093	1.57 OR 2.36
015-87-0206	A-70491-1006	68	842	1.650	41.91	1.816	46.13	2.095	53.21	.125	.062 OR .093	1.57 OR 2.36
015-87-0207	A-70491-1007	68	574	1.650	41.91	1.816	46.13	2.095	53.21	.165	.125	3.18
015-87-0208	A-70491-1008	68	842	1.650	41.91	1.816	46.13	2.095	53.21	.165	.125	3.18
015-87-0209	A-70491-1009	50	574	1.200	30.48	1.366	34.70	1.645	41.78	.080	.062	1.57
015-87-0210	A-70491-1010	50	842	1.200	30.48	1.366	34.70	1.645	41.78	.080	.062	1.57
015-87-0211	A-70491-1011	68	574	1.650	41.91	1.816	46.13	2.095	53.21	.080	.062	1.57
015-87-0212	A-70491-1012	68	842	1.650	41.91	1.816	46.13	2.095	53.21	.080	.062	1.57
015-87-0213	A-70491-1013	68	563	1.650	41.91	1.816	46.13	2.095	53.21	.080	.062	1.57
015-87-0214	A-70491-1014	50	574	1.200	30.48	1.366	34.70	1.645	41.78	.100	.062 OR .093	1.57 OR 2.36

ASSEMBLY NO. LEGEND:

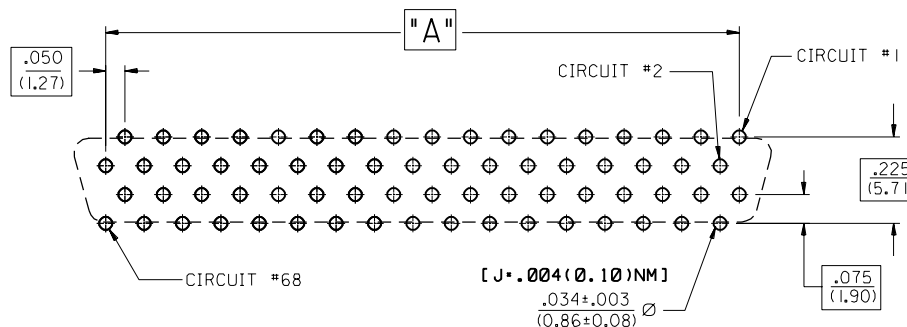
A-70491-1 * * *

CIRCUIT SIZE, PLATING, AND TAIL LENGTH

NO PEG OPTION



RECOMMENDED 50 CKT. P.C. BOARD LAYOUT
CONNECTOR SIDE



RECOMMENDED 68 CKT. P.C. BOARD LAYOUT
CONNECTOR SIDE

NOTES:

- REFER TO PS-79058 PRODUCT SPEC. FOR ELECTRICAL, MECHANICAL AND ENVIRONMENTAL SPECIFICATIONS.
- MATERIAL:
RECEPTACLE HSG: 30% GLASS FILLED LCP; COLOR-BLACK; UL 94V-0
CONTACTS: PHOSPHOR BRONZE
- PACKAGING:
PARTS PACKAGED IN TUBES PER PK-70873-0427.
- PLATING:

CODE 563 GOLD 30 MICROINCH MIN. GOLD IN SELECTIVE AREA, 100 MICROINCH MIN. TIN/LEAD (60/40) IN SELECTIVE AREA, BOTH OVER 50 MICROINCH MIN. NICKEL UNDERPLATE.	CODE 842 PALLADIUM NICKEL 2 MICROINCH MIN. GOLD FLASH OVER 30 MICROINCH MIN. PALLADIUM NICKEL IN SELECTIVE AREA, AND 75 MICROINCH MIN. TIN/LEAD IN SELECTIVE AREA, BOTH OVER 50 MICROINCH MIN. NICKEL UNDERPLATE.
CODE 574 GOLD 30 MICROINCH MIN. GOLD IN SELECTIVE AREA, 75 MICROINCH MIN. TIN/LEAD IN SELECTIVE AREA, BOTH OVER 50 MICROINCH MIN. NICKEL UNDERPLATE.	

F		D		E		C		DI		B	
SEE SHEET I		SEE SHEET I		SEE SHEET I		SEE SHEET I		SEE SHEET I		SEE SHEET I	
LTR.		REVISIONS		LTR.		REVISIONS		LTR.		REVISIONS	

DIMENSIONS SHOWN (METRIC) INCH		UNLESS OTHERWISE SPECIFIED TOLERANCES: ANGULAR $\pm 1/2^\circ$	
3 PLACE	$\pm .010$	INCH	METRIC
2 PLACE	$\pm .005$	± 0.25	
1 PLACE	$\pm .001$	$\pm .001$	
DRAFT WHERE APPLICABLE MUST REMAIN WITHIN DIMENSIONS			
DRWN. BY: J. Long	CHK'D. BY: DCB	SCALE:	
APP'D. BY: J D	SCALE:		

MFG. SH. REV.		REVISE ONLY ON CAD SYSTEM	
TITLE: SCSI SALES ALL-PLASTIC VERTICAL RECEPTACLE ASSEMBLY			
PART NO. SEE CHART		SHEET NO. 2	
DATE 06/17/92		U.S.A.	
MOLX INCORPORATED		60532	
L15LEJLL		60532	
DRWG. NO. SDA-70491-1		U.S.A.	
FILE NAME S7049112.DGN		DIV. TC	
THIS DRAWING CONTAINS INFORMATION THAT IS PROPRIETARY TO MOLEX INC. AND SHOULD NOT BE USED WITHOUT WRITTEN PERMISSION.			