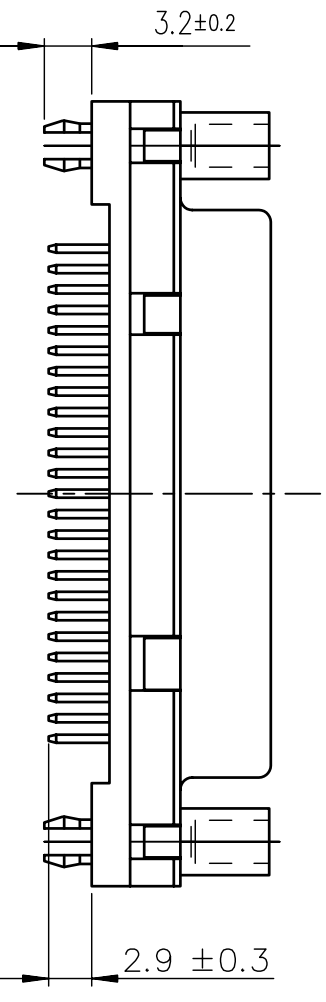


PC card drilling dimensions(after plating)
(thickness 1.60±0.20mm)



SHELL	A±0.38	B±0.12	C±0.10	D±0.25	E±0.07	Plating:	Tin lead	Tin
09	30.81	24.99	16.96	16.21	10.96	D09S24A*GV09	D09S24A*GV09LF	
15	39.14	33.32	25.18	24.54	19.18	D15S24A*GV09	D15S24A*GV09LF	
25	53.03	47.04	39.12	38.25	33.12			
37	69.32	63.50	55.68	54.71	49.68			

Plating: 4 -> flash AU
6 -> 0.76µ AU

REQUIREMENTS

Technical characteristics:

Shell: steel zinc cr3, white or transparent color plated
Insulators: self-extinguishing thermoplastic, ULclass94V0

IR or reflow process compatible

Contacts size 20: phosphor bronze,gold on mating end,bright tin/Tin lead on termination end over nickel on entire contact

Cycles:>500 for protection 6 and >200 for type 4

gauge retention force:0.20N mini

Accessories:

Threaded inserts:4,40 with harpoon,tin plated retention against torque 0.50N.m minimum

Electrical characteristics:

max.current rating:5A

Test voltage:1000V

Rated voltage:300V

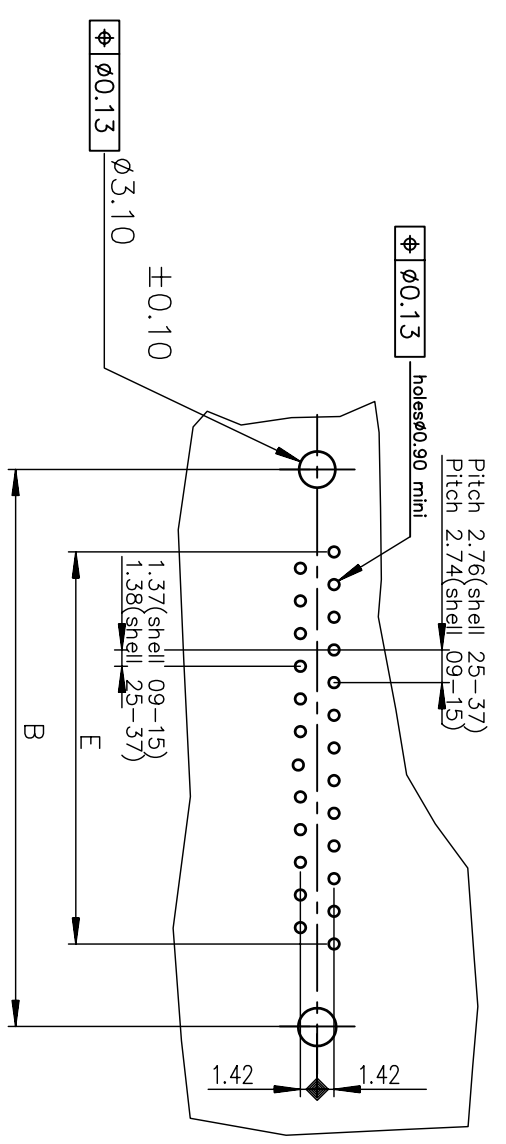
Contact resistance:~10m?

Shell resistance:~5m?

Insulation resistance:~5000M?

Climatic characteristics:
Operating temperature range:-55°C +225°C

Dimensions:
in accordance with MIL-C-24308C and DIN41652



NOTE ROHS INFORMATION

- The "LF" products meet European Union Directives and other country regulations as described in GS-22-008.
- The housing will withstand exposure to 260°C peak temperature for 30 seconds in a convection,infra-red or vapor reflow oven
- See application notes/procedures if they are available.
- Termination plating spec: 1.27µm Nickel mini, 2.5 to 7.5µm Sn (pure matte)
- Packaging spec: see GS-14-920
- Shell plating : zinc cr3 white or transparent color
- Accessories: Sn pure bright

Connectors are packaged in trays : See C01-8646-0519

European Views

www.fciconnect.com		surface	ISO 1302	tolerance std	ISO 406 ISO 1101	projection	mm
		TOLERANCES UNLESS OTHERWISE SPECIFIED				Scale	
Dr	M PESSON	2006/01/16	ANGULAR	0.X	±0.1	A3	2
Eng	P LEGARE	2006/01/16	LINEAR	0.XX	±0.1		
Chr	NIRMAL GEORGE	2010-02-23	0.XX	0.XXX	±0.1		
Appr	SUDHIR VARMA	2010-02-23	Product family		D-SUB	Spec ref	-

rev	ecn no	dr	date
E	LS06-0013	MPE	2006/01/16
F	LS06-0097	LGO	2006/07/29
G	110-0059	NG	2010-02-23

FCI FEMALE CONNECTOR STD EURO
straight PIP version for PCB 1.60mm

Rev. G

C01-8646-0453
CUSTOMER sheet 1 of 1