



# DDR Termination Regulator

## Features

- Operation Supply Voltage: 1.6V to 5.5V
- Low Supply Current: 280µA @ 2.5V
- Low Output Offset
- Source and Sink Current
- Low External Component Count
- No Inductor Required
- No external Resistors Required
- Thermal Shutdown Protection
- SOP-8L with Power-Pad package

## Applications

- DDR-SDRAM Termination Voltage
- DDR-I / DDR-II Termination Voltage
- SSTL-2
- SSTL-3

## General Description

The G2995 is a linear regulator designed to meet the JEDEC SSTL-2 and SSTL-3 (Series Stub Termination Logic) specifications for termination of DDR-SDRAM. It contains a high-speed operational amplifier that provides excellent response to the load transients. This device can deliver 1.5A continuous current and transient peaks up to 3A in the application as required for DDR-SDRAM termination. With an independent  $V_{SENSE}$  pin, the G2995 can provide superior load regulation. The G2995 provides a  $V_{REF}$  output as the reference for the applications of the chipset and DIMMs.

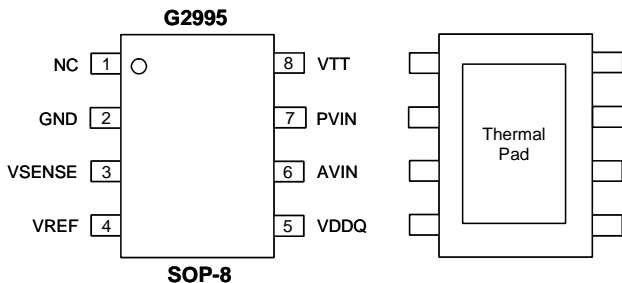
The G2995 can easily provide the accurate  $V_{TT}$  and  $V_{REF}$  voltages without external resistors that PCB areas can be reduced. The quiescent current is as low as 280µA @ 2.5V. So the power consumption can meet the low power consumption applications.

## Ordering Information

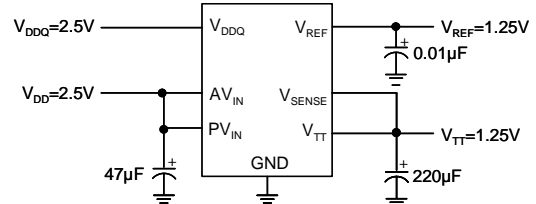
ORDER NUMBER	ORDER NUMBER (Pb free)	MARKING	TEMP. RANGE	PACKAGE
G2995P1U	G2995P1Uf	G2995	-40°C to 85°C	SOP-8
G2995F1U	G2995F1Uf	G2995	-40°C to 85°C	SOP-8 (FD)

Note: P1:SOP-8      F1:SOP-8(FD)  
 U: Tape & Reel      (FD): Thermal Pad

## Pin Configuration



## Typical Application Circuit





**Absolute Maximum Ratings** <sup>(1)</sup>

Supply Voltage  
 PVIN, AVIN, VDDQ to GND.....-0.3V to +6V  
 Operating Ambient Temperature Range  
 T<sub>A</sub>.....-40°C to +125°C  
 Maximum Junction Temperature, T<sub>J</sub>.....150°C  
 Storage Temperature Range, T<sub>STG</sub>.....-65°C to+150°C  
 Reflow Temperature (Soldering, 10 sec).....260°C  
 Electrostatic Discharge, V<sub>ESD</sub>  
 Human body mode.....2000V<sup>(2)</sup>  
 SOP-8L Thermal Resistance (θ<sub>JA</sub>).....130°C/W  
 SOP-8L (FD) Thermal Resistance (θ<sub>JA</sub>).....50°C/W<sup>(3)</sup>  
 SOP-8L (FD) Thermal Resistance (θ<sub>JA</sub>).....41°C/W<sup>(4)</sup>  
 SOP-8L (FD) Thermal Resistance (θ<sub>Jc</sub>).....12°C/W

**Recommend Operation Range**

Operating Ambient Temperature Range  
 T<sub>A</sub>.....-40°C to +85°C  
 AVIN to GND.....1.6V to +5.5V  
 PVIN, VDDQ to GND.....1.6V to AVIN

**Note:**

- <sup>(1)</sup>: Absolute maximum rating indicates limits beyond which damage to the device may occurs.
- <sup>(2)</sup>: Human body model : C = 100pF, R = 1500Ω, 3 positive pulses plus 3 negative pulses
- <sup>(3)</sup>: The package is placed on a 2-layer PCB (2oz/2oz) with 6 vias.
- <sup>(4)</sup>: The package is placed on a 2-layer PCB (2oz/2oz) with 6 vias. The airflow is used.

**Electrical Characteristics**

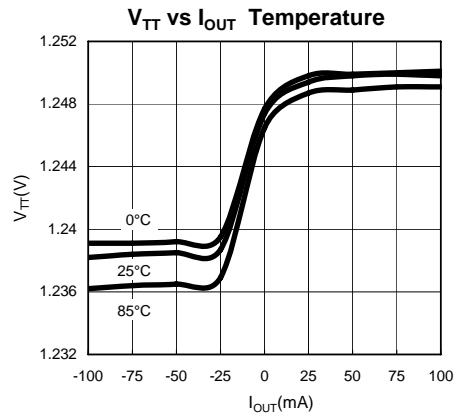
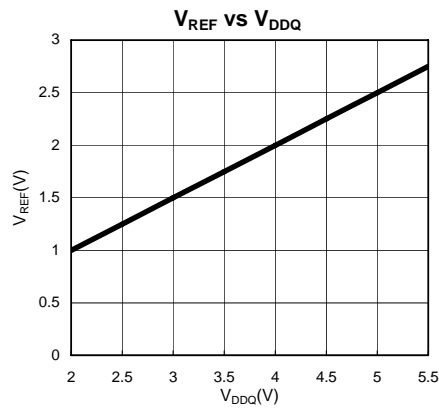
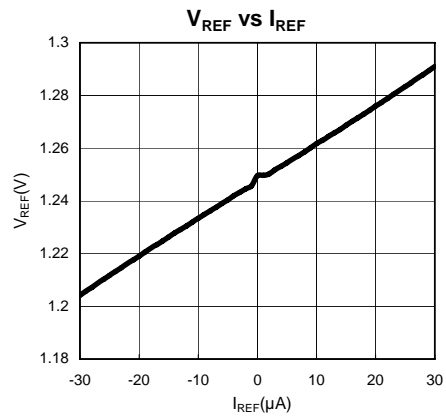
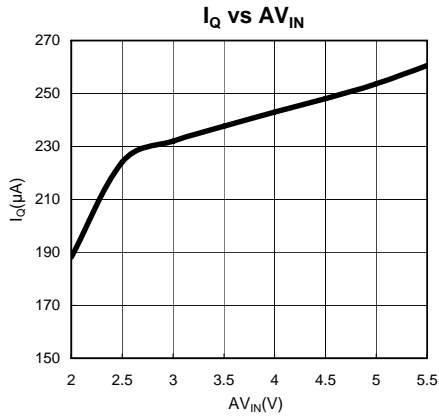
Specifications with standard typeface are for T<sub>A</sub>=25°C. Unless otherwise specified, AVIN=PVIN=2.5V, VDDQ=2.5V

PARAMETER	SYMBOL	CONDITION	MIN	TYP	MAX	UNIT	
V <sub>REF</sub> Voltage	V <sub>REF</sub>	VDDQ=2.3V	1.11	1.145	1.19	V	
		VDDQ=2.5V	1.21	1.245	1.29	V	
		VDDQ=2.7V	1.31	1.345	1.39	V	
V <sub>REF</sub> Output impedance	Z <sub>REF</sub>	I <sub>REF</sub> =-30μA to + 30μA	---	1.15	---	kΩ	
V <sub>TT</sub> Output voltage	V <sub>TT</sub>	I <sub>OUT</sub> =0A					
		VDDQ=2.3V	1.11	1.152	1.19	V	
		VDDQ=2.5V	1.21	1.252	1.29	V	
		VDDQ=2.7V	1.31	1.352	1.39	V	
		I <sub>OUT</sub> =±1.5A					
		VDDQ=2.3V	1.11	1.152	1.19	V	
V <sub>TT</sub> Output Voltage Offset (V <sub>REF</sub> - V <sub>TT</sub> )	V <sub>OSVtt</sub>	I <sub>OUT</sub> =0A	-40	0	40	mV	
		I <sub>OUT</sub> =-1.5A	-40	0	40	mV	
		I <sub>OUT</sub> =+1.5A	-40	0	40	mV	
Quiescent Current	I <sub>Q</sub>	I <sub>OUT</sub> =0A	---	280	500	μA	
VDDQ input Impedence	Z <sub>VDDQ</sub>		---	100	---	KΩ	
V <sub>SENSE</sub> input current	I <sub>SENSE</sub>		---	20	---	nA	
Thermal Shutdown	T <sub>SD</sub>		---	150	---	°C	
Thermal Shutdown Hystersis	T <sub>Hsy</sub>		---	25	---	°C	



Typical Performance Characteristics

$AV_{IN}=2.5V$ ,  $P_{VIN}=2.5V$ ,  $V_{DDQ}=2.5V$ ,  $C_{AVIN}=0.1\mu F$ ,  $C_{PVIN}=47\mu F$ ,  $C_{VREF}=0.01\mu F$ ,  $C_{VTT}=220\mu F$ ,  $T_A=25^\circ C$ , unless otherwise noted.

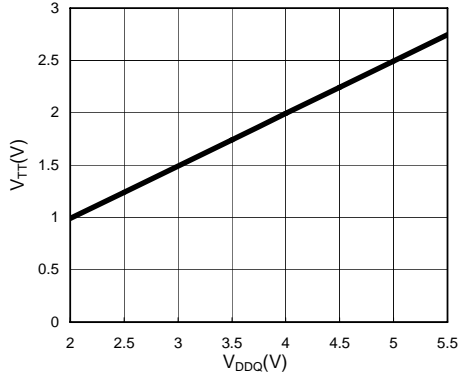




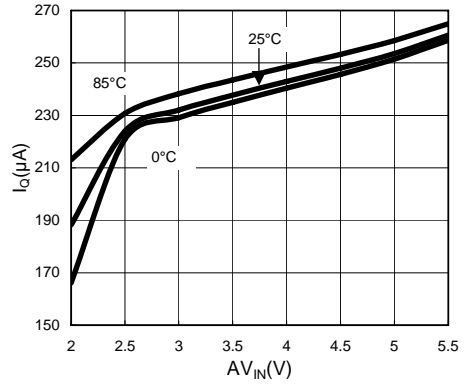
Typical Performance Characteristics

AV<sub>IN</sub>=2.5V, P<sub>VIN</sub>=2.5V, V<sub>DDQ</sub>=2.5V, C<sub>AVIN</sub>=0.1μF, C<sub>PVIN</sub>=47μF, C<sub>VREF</sub>=0.01μF, C<sub>VTT</sub>=220μF, T<sub>A</sub>=25°C, unless otherwise noted.

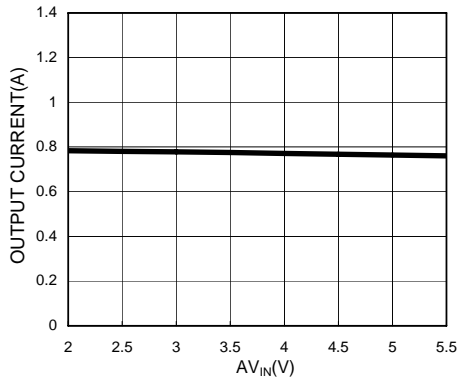
V<sub>TT</sub> vs V<sub>DDQ</sub>



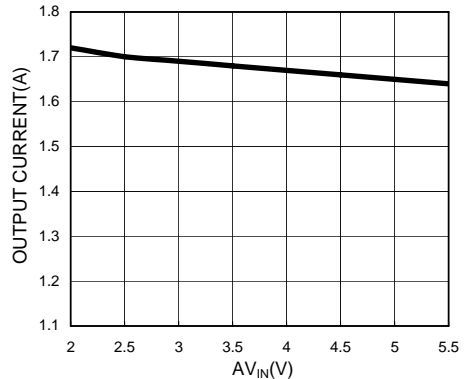
I<sub>Q</sub> vs AV<sub>IN</sub> Temperature



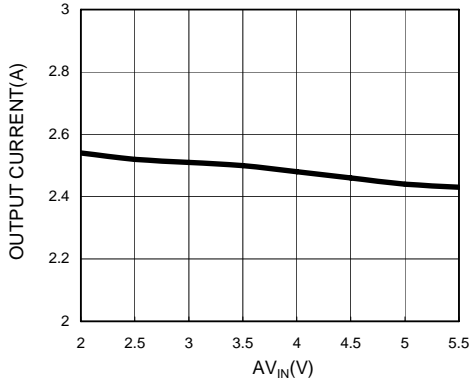
Maximum Sourcing Current vs AV<sub>IN</sub>  
(V<sub>DDQ</sub>=2.5V, P<sub>VIN</sub>=1.8V)



Maximum Sourcing Current vs AV<sub>IN</sub>  
(V<sub>DDQ</sub>=2.5V, P<sub>VIN</sub>=2.5V)



Maximum Sourcing Current vs AV<sub>IN</sub>  
(V<sub>DDQ</sub>=2.5V, P<sub>VIN</sub>=3.3V)

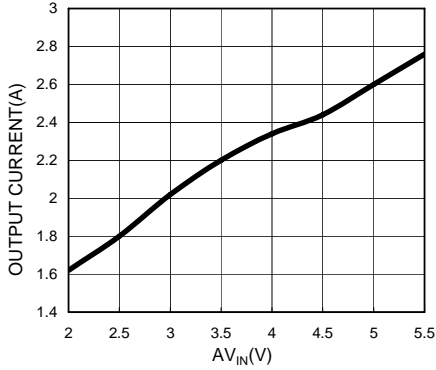




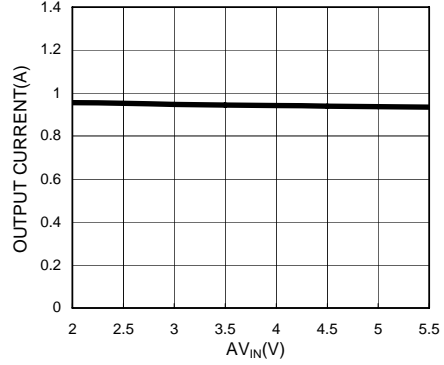
Typical Performance Characteristics

AVIN=2.5V, PVIN=2.5V, VDDQ=2.5V, CAVIN=0.1μF, CPVIN=47μF, CVREF=0.01μF, CVTT=220μF, TA=25°C, unless otherwise noted.

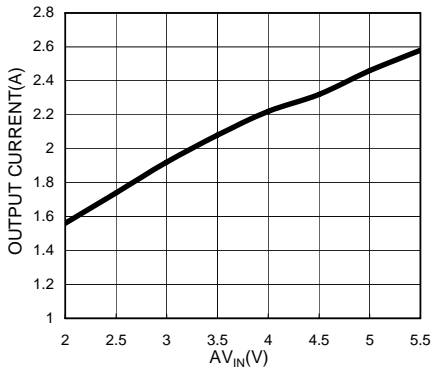
Maximum Sinking Current vs AVIN (VDDQ=2.5V)



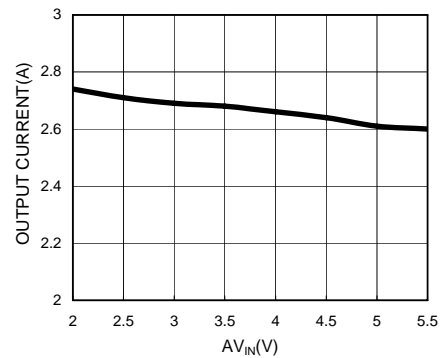
Maximum Sourcing Current vs AVIN (VDDQ=1.8V, PVIN=1.8V)



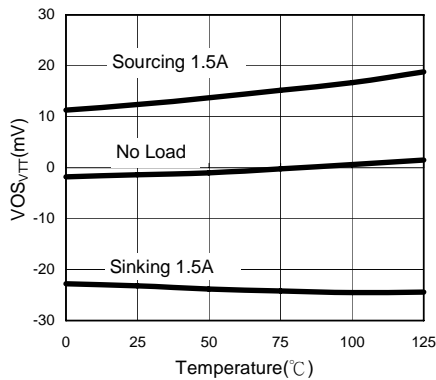
Maximum Sinking Current vs AVIN (VDDQ=1.8V)



Maximum Sourcing Current vs AVIN (VDDQ=1.8V, PVIN=3.3V)



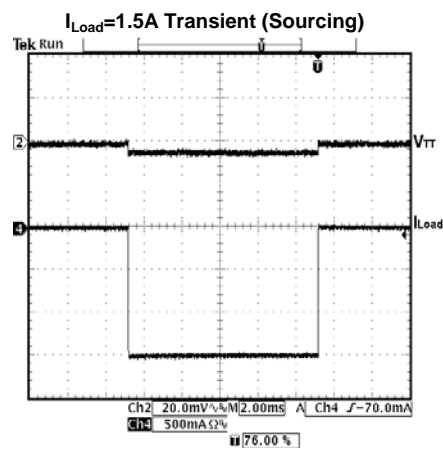
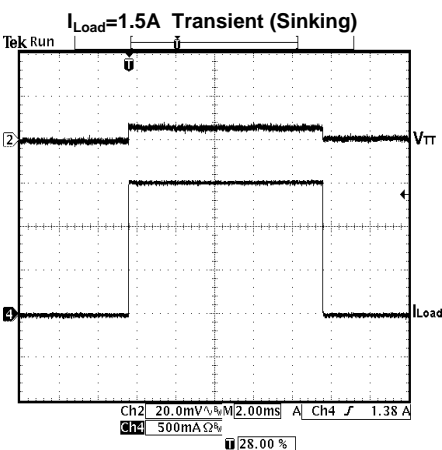
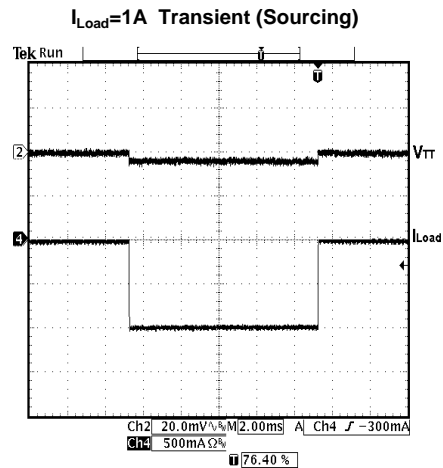
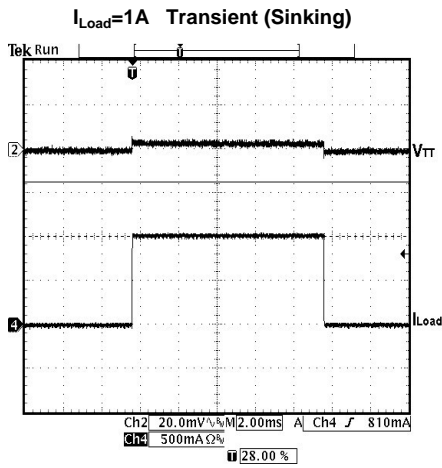
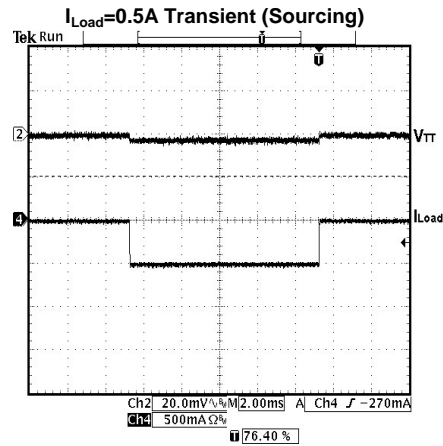
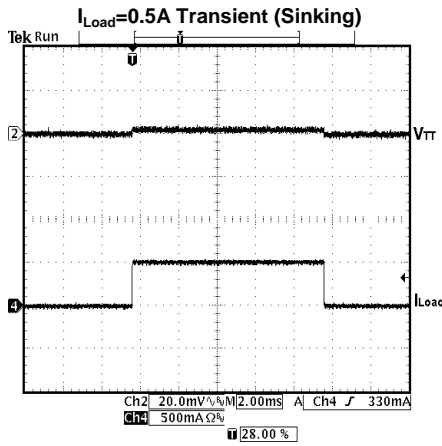
VOSVTT vs Temperature (VDDQ=2.5V)





Typical Performance Characteristics (continued)

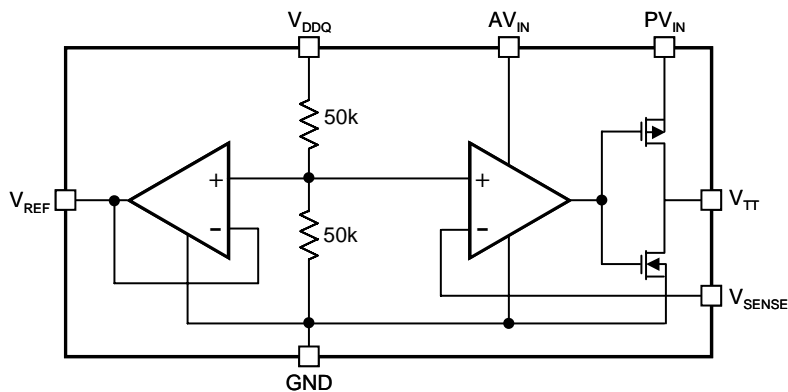
AVIN=2.5V, PVIN=2.5V, VDDQ=2.5V, CAVIN=0.1µF/Ceramic X7R/0603/6.3V/TKD, CPVIN=68µF/6.3V POSCAP Series/SANYO, CVTT=330µF\*2/6.3V POSCAP Series/SANYO, TA=25°C, unless otherwise noted.



## Pin Description

NUMBER	NAME	FUNCTION
1	NC	
2	GND	Ground
3	VSENSE	Feedback pin for regulating $V_{TT}$
4	VREF	Buffered output that is a reference output of $V_{DDQ}/2$
5	VDDQ	Input for internal reference which equals to $V_{DDQ}/2$
6	AVIN	Analog input pin
7	PVIN	Power input pin
8	VTT	Output voltage for connection to termination resistors, equal to $V_{DDQ}/2$

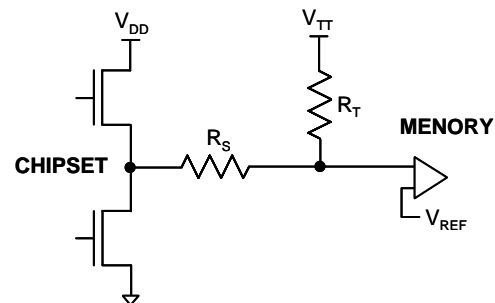
## Block Diagram



## Description

The G2995 is a linear bus termination regulator designed to meet the JEDEC SSTL-2 and SSTL-3 (Series Stub Termination Logic) specifications for termination of DDR-SDRAM. The output,  $V_{TT}$ , is capable of sinking and sourcing current while regulating the output voltage equal to  $V_{DDQ}/2$ . The G2995 is designed to maintain the excellent load regulation and with fast response time to minimum the transition preventing shoot-through. The G2995 also incorporates two distinct power rails that separates the analog circuitry (AVIN) from the power output stage (PVIN). This power rails split can be utilized to reduce the internal power dissipation. And this also permits G2995 to provide a termination solution for the next generation of DDR-SDRAM (DDR II).

Series Stub Termination Logic (SSTL) was created to improve signal integrity of the data transmission across the memory bus. This termination scheme is essential to prevent data error from signal reflections while transmitting at high frequencies encountered with DDR-SDRAM. The most common form of termination is Class II single parallel termination. This involves one  $R_S$  series resistor from the chipset to the memory and one  $R_T$  termination resistor, both  $25\Omega$  typically. The resistors can be changed to scale the current requirements from the G2995. This implementation can be seen below in Figure 1.



**Figure 1. SSTL-Termination Scheme**

### AVIN, PVIN

AVIN and PVIN are two independent input supply pins for the G2995. AVIN is used to supply all the internal analog circuits. PVIN is only used to supply the output stage to create the regulated  $V_{TT}$ . To keep the regulation successfully, AVIN should be equal to or larger than PVIN. Using a higher PVIN voltage will produce a larger sourcing capability from  $V_{TT}$ . But the internal power loss will also increase and then the heat increases. If the junction temperature exceeds the thermal shutdown threshold than the G2995 will enter the shutdown state, where  $V_{TT}$  is tri-state and  $V_{REF}$  remains active.

For SSTL-2 applications, the AVIN and PVIN can be short together at 2.5V to minimize the PCB complexity and to reduce the bypassing capacitors for the two supply pins separately.

**VDDQ**

A voltage divider of two 50kΩ is connected between VDDQ and ground, to create the internal reference voltage (VDDQ/2). This guarantees that V<sub>TT</sub> will track VDDQ/2 precisely. The optimal implementation of VDDQ is as a remote sensing. This can be achieved by connecting VDDQ directly to the 2.5V rail (SSTL-2 applications) at the DIMM instead of AVIN and PVIN. This will ensure that the reference voltage tracks the DDR memory rails precisely without a large voltage drop from the power lines.

**Vsense**

The V<sub>SENSE</sub> pin is the feedback sensing pin of the operation amplifier which regulates the V<sub>TT</sub> voltage. In most motherboard applications, the termination resistors will connect V<sub>TT</sub> in a long plane. If using the remote sensing pin – V<sub>SENSE</sub> to the middle of the bus, the significant long-trace IR drop resulting in a termination voltage which is lower at one end than the other can be avoided. This will provide a better distribution across the entire termination bus. If the remote load regulation is not used, the V<sub>SENSE</sub> pin must still be connected to V<sub>TT</sub> for correct regulation. Care should be taken when a long V<sub>SENSE</sub> trace is implemented in close proximity to the memory. Noise pickup in the V<sub>SENSE</sub> trace can cause problems with precise regulation of V<sub>TT</sub>. A small 0.1μF ceramic capacitor placed next to the V<sub>SENSE</sub> pin can help to filter any high frequency signals and preventing errors.

**V<sub>REF</sub>**

V<sub>REF</sub> provides a buffered output of the internal reference voltage (VDDQ/2). It can support the reference voltage of Northbridge chipset and memory. For better performance, using an output bypass capacitor close this pin is more helpful for the noise. A ceramic capacitor in the range of 0.1μF to 0.01μF is recommended.

**V<sub>TT</sub>**

V<sub>TT</sub> is the regulated output that is used to terminate the bus resistors of DDR-SDRAM. It can precisely track the VDDQ/2 voltage with the sinking and sourcing current capability. The G2995 is designed to deliver 1.5A continuous current and peak current up to 3A with a fast transient response @ 2.5V supply rail. The maximum continuous current sourcing from V<sub>TT</sub> is a function of PVIN. Using a higher PVIN will increase the source current from V<sub>TT</sub>, but it also increase the internal power dissipation and reduce the efficiency. Although the G2995 can deliver the larger current, care should be taken for the thermal dissipation when larger current is required. The G2995 is packaged with Power-Pad to increase the power dissipation capability. When driving larger current, the larger heat-sink in the PCB is strongly recommended to have a better ther-

mal performance. The R<sub>DS</sub> of MOS will increase when the junction temperature increases. If the heat is not dealt with well, the maximum output current will be degraded. When the temperature exceeds the junction temperature, the thermal shutdown protection is activated. That will drive the V<sub>TT</sub> output into tri-state until the temperature returns below the hysteretic trigger point.

**Capacitors**

The G2995 does not require the capacitors for input stability, but it is recommended for improving the performance during large load transition to prevent the input power rail from dropping, especially for PVIN. The input capacitor for PVIN should be as close as possible. The typical recommended value is 50μF for AL electrolytic capacitors, 10uF with X5R for the ceramic capacitors. To prevent the excessive noise coupling into this device, an additional 0.1μF ceramic capacitor can be placed on the AVIN power rail for the better performance.

The output capacitor of the G2995 is suggested to use the capacitors with low ESR. Using the capacitors with low ESR (as ceramic, OS-CON, tantalum) will have the better transition performance which is with smaller voltage drop when the peak current occurring at the transition. As a general recommendation the output capacitor should be sized above 220μF with the low ESR for SSTL applications with DDR-SDRAM.

**Thermal Dissipation**

When the current is sinking to or sourcing from V<sub>TT</sub>, the G2995 will generate internal power dissipation resulting in the heat. Care should be taken to prevent the device from damages caused by the junction temperature exceeding the maximum rating. The maximum allowable internal temperature rise (T<sub>RMAX</sub>) can be calculated under the given maximum ambient temperature (T<sub>AMAX</sub>) of the application and the maximum allowable junction temperature (T<sub>JMAX</sub>).

$$T_{RMAX} = T_{JMAX} - T_{AMAX}$$

From this equation, the maximum power dissipation (P<sub>DMAX</sub>) of the G2995 can be calculated:

$$P_{DMAX} = T_{RMAX} / \theta_{JA}$$

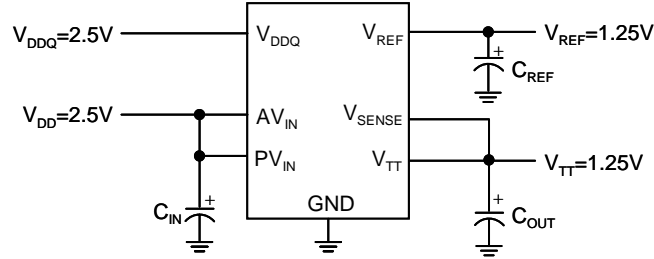
$\theta_{JA}$  of the G2995 will be dependent on several variables: the packages used, the thickness and size of the copper, the number of vias and the airflow. In the package, the G2995 use the SO-8 with Power-PAD to improve the  $\theta_{JA}$ . If the layout of the PCB can put a larger size of copper to contact the Power-PAD of this device, the  $\theta_{JA}$  will be further improved. The better  $\theta_{JA}$  is not only protecting the device well, but also increasing the maximum current capability at the same ambient temperature.



**Typical Application Circuits**

There are several application circuits shown in Figure 2 through 8 to illustrate some of the possible configurations of the G2995. Figure 2-4 are the SSTL-2 applications. For the majority of applications that imple-

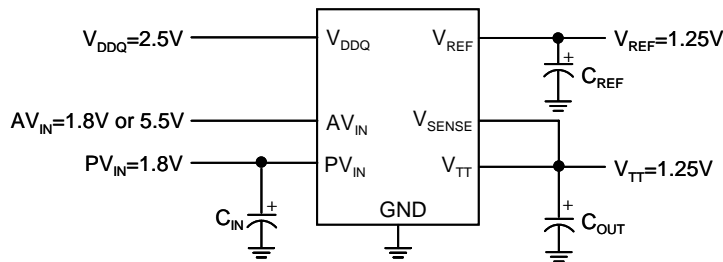
ment the SSTL-2 termination scheme, it is recommended to connect all the input rails to 2.5V rail, as seen in Figure 2. This provides an optimal trade-off between power dissipation and component count.



**Figure 2. Recommended SSTL-2 Implementation**

In Figure 3, the power rails are split. The power rail of the output stage (PVIN) can be as low as 1.8V, the power rail of the analog circuit (AVIN) is operated above 2V. The lower output stage power rail can lower the internal power dissipation when sourcing from the

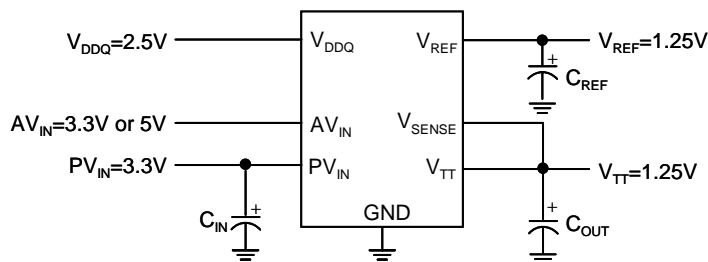
device and improve the efficiency, but the disadvantage is the maximum continuous current sourcing from VTT is reduced. This configuration is applied when the power dissipation and efficiency are concerned.



**Figure 3. Lower Power Dissipation SSTL-2 Implementation**

In Figure 4, the power rail of the output stage (PVIN) is connected to 3.3V to increase the maximum continuous current sourcing from VTT. AVIN should be always equal to or larger than PVIN. This configuration can increase the source capability of this device, but the power dissipation increases at the same time. It

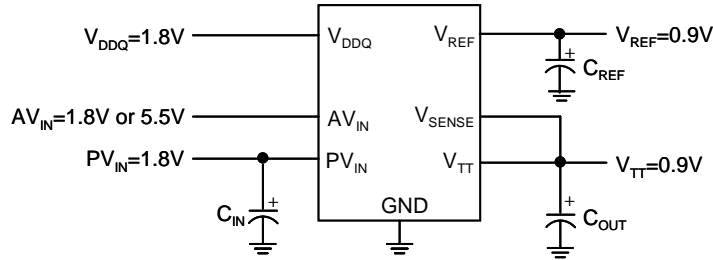
should be more careful to prevent the junction temperature from exceeding the maximum rating. Because of this risk, it is not recommended to supply the output stage power rail (PVIN) with a voltage higher than a nominal 3.3V rail.



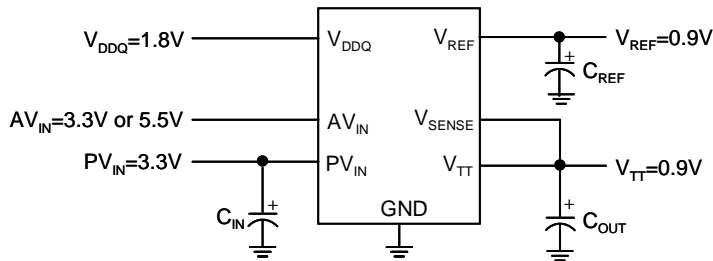
**Figure 4. SSTL-2 Implementation with higher voltage rails**

In Figure 5 & 6, they are the application configurations of DDR-II SDRAM bus terminations. Figure 5 is the typical application scheme of DDR-II SDRAM. With the separate VDDQ pin and an internal resistor divider, it

is possible to use the G2995 in applications utilizing DDR-II memory. Figure 6 is used to increase the driving capability. The risk is the same as figure 4.



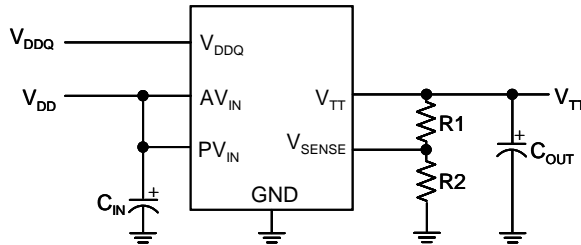
**Figure 5. Recommended DDR-II Termination**



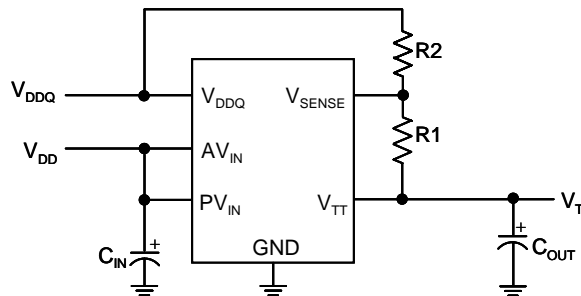
**Figure 6. DDR-II Termination with higher voltage rails**

Figure 7 & 8 are used to scale the  $V_{TT}$  to the wanted value when the standard voltages of SSTL-2 do not meet the requirements. Using  $R_1$  &  $R_2$ , Figure 7 can

shift  $V_{TT}$  up to  $V_{DDQ}/2 * (1+R_1/R_2)$  and figure 8 can shift  $V_{TT}$  down to  $V_{DDQ}/2 * (1-R_1/R_2)$ .

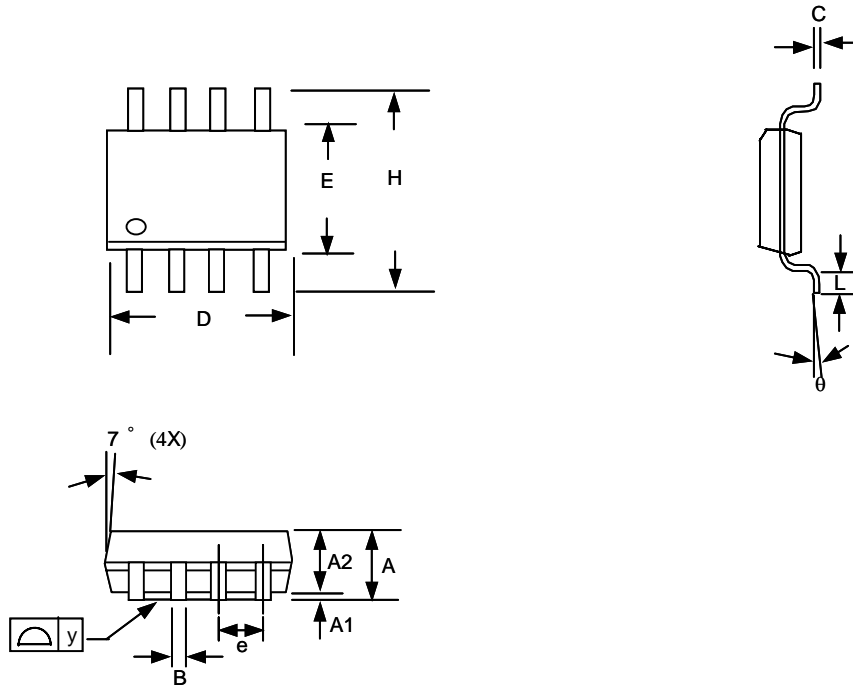


**Figure 7. Increasing VTT by Level Shifting**



**Figure 8. Decreasing VTT by Level Shifting**

## Package Information

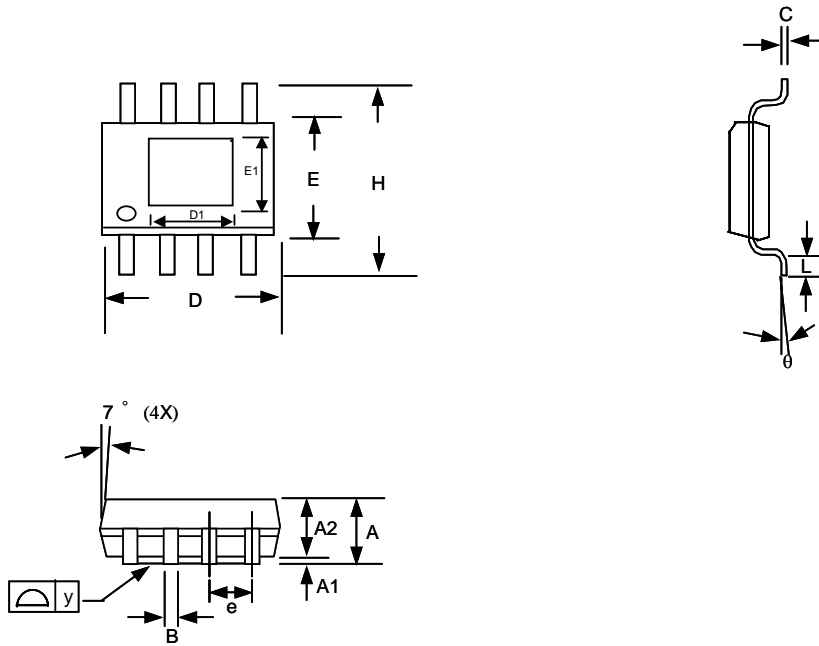


### SOP-8L Package

**Note:**

1. Package body sizes exclude mold flash and gate burrs
2. Dimension L is measured in gage plane
3. Tolerance 0.10mm unless otherwise specified
4. Controlling dimension is millimeter converted inch dimensions are not necessarily exact.
5. Followed from JEDEC MS-012

SYMBOL	DIMENSION IN MM			DIMENSION IN INCH		
	MIN.	NOM.	MAX.	MIN.	NOM.	MAX.
A	1.35	1.60	1.75	0.053	0.063	0.069
A1	0.10	-----	0.25	0.004	-----	0.010
A2	-----	1.45	-----	-----	0.057	-----
B	0.33	-----	0.51	0.013	-----	0.020
C	0.19	-----	0.25	0.007	-----	0.010
D	4.80	-----	5.00	0.189	-----	0.197
E	3.80	-----	4.00	0.150	-----	0.157
e	-----	1.27	-----	-----	0.050	-----
H	5.80	-----	6.20	0.228	-----	0.244
L	0.40	-----	1.27	0.016	-----	0.050
y	-----	-----	0.10	-----	-----	0.004
$\theta$	0°	-----	8°	0°	-----	8°



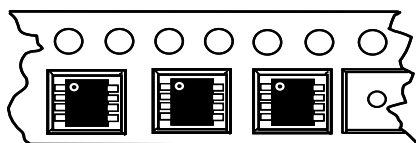
**SOP- 8L (FD) Package**

**Note:**

1. Package body sizes exclude mold flash and gate burrs
2. Dimension L is measured in gage plane
3. Tolerance 0.10mm unless otherwise specified
4. Controlling dimension is millimeter converted inch dimensions are not necessarily exact.
5. Followed from JEDEC MS-012

SYMBOL	DIMENSION IN MM			DIMENSION IN INCH		
	MIN.	NOM.	MAX.	MIN.	NOM.	MAX.
A	1.45	1.50	1.55	0.057	0.059	0.061
A1	0.00	-----	0.10	0.000	-----	0.004
A2	-----	1.45	-----	-----	0.057	-----
B	0.33	-----	0.51	0.013	-----	0.020
C	0.19	-----	0.25	0.007	-----	0.010
D	4.80	-----	5.00	0.189	-----	0.197
E	3.80	-----	4.00	0.150	-----	0.157
e	-----	1.27	-----	-----	0.050	-----
H	5.80	-----	6.20	0.228	-----	0.244
L	0.40	-----	1.27	0.016	-----	0.050
y	-----	-----	0.10	-----	-----	0.004
$\theta$	0°	-----	8°	0°	-----	8°
D1	2.22	-----	2.60	0.087	-----	0.102
E1	2.60	-----	2.98	0.102	-----	0.117

**Taping Specification**



**Feed Direction**  
**Typical SOP Package Orientation**

PACKAGE	Q'TY/REEL
SOP-8	2,500 ea
SOP-8 (FD)	2,500 ea

GMT Inc. does not assume any responsibility for use of any circuitry described, no circuit patent licenses are implied and GMT Inc. reserves the right at any time without notice to change said circuitry and specifications.