

Ordering Data

Base number specifies connector style _____ Number of positions (see table)

□ □ □ □ - X Y Y Y Z

Plating Options

Replace X in dash number with:
 1 - 1.27 μm (50 μin) Ni under 0.76 μm (30 μin) gold
 3 - 1.27 μm (50 μin) Ni under 1.27 μm (50 μin) gold
 5 - 1.27 μm (50 μin) Ni under 0.76 μm (30 μin) GXT™
 A - 1.27 μm (50 μin) Ni under all; with .76 μm (30 μin) Au on contact area, and SnPb on PCB interface. Au flash all other areas.*

B - 1.27 μm (50 μin) Ni under all; with .76 μm (30 μin) GXT™ on contact area, and SnPb on PCB interface. Au flash all other areas.*

C - 1.27 μm (50 μin) Ni under all; with 0.76 μm (30 μin.) Au on contact area, and SnPb on PCB interface. 0.76 μm (30 μin) Au on tail side contact area. Au flash all other areas.

Note, Available on C & D Tail Lengths only

D - 1.27 μm (50 μin) Ni under all; with .76 μm (30 μin) GXT™ on contact area, and SnPb on PCB interface. .76 μm (30 μin) GXT™ on tail side contact area, Au flash all other areas.

Note, Available on C & D Tail Lengths only.

*Available on A & G Tail Lengths only

Tail Length

Replace Z in dash number with:
 S - 2.54 mm (0.100in)
 J - 3.05 mm (0.120in)
 A - 4.50 mm (0.177in)
 H - 4.57 mm (0.180in)
 G - 3.05 mm (0.250in)
 C - 13.54 mm (0.533in)
 D - 18.63 mm (0.733in)

Base Number Option Menu

| Base Number | Style | Platings Available | Tail Length |
|-------------|---|--------------------|---------------|
| 50007 (1) | Press Fit Pins, Vertical | 1, 3, 5 | A, G, C, D |
| 50766 (1) | Press Fit Pins, Vertical, Duplex Plating | A, B, C, D | A, G, C, D |
| 50013 (2) | Solder Tail Pins, Vertical | 1, 3, 5 | J, A, G, C, D |
| 50774 (2) | Solder Tail Pins, Vertical, Duplex Plating | A, B | J, A |
| 50120 | Solder Tail Pins, Right Angle | 1, 3, 5 | H, J |
| 50780 | Solder Tail Pins, Right Angle, Duplex Plating | A | S |
| 50429 | Shroud, Pinless Header, Self-Retaining | X | X |
| 50435 | Shroud, Pinless Header, Slip On | X | X |

- (1) Request Select Load Worksheet, 50808 for FMLB options.
 (2) Request Select Load Worksheet, 50811 for FMLB options.

Dash Number

| Number of Positions | Dash Number (YYYYZ) | Dimensions | | | | | |
|---------------------|---------------------|------------|--------|--------|--------|--------|-------|
| | | A | | B | | C | |
| | | mm | in. | mm | in. | mm | in. |
| 240 | X240Z | 229.87 | 9.050 | 222.25 | 8.750 | 99.06 | 3.900 |
| 246 | X246Z | 234.95 | 9.250 | 227.33 | 8.950 | 101.60 | 4.000 |
| 252 | X252Z | 240.03 | 9.450 | 232.41 | 9.150 | 104.14 | 4.100 |
| 258 | X258Z | 245.11 | 9.650 | 237.49 | 9.350 | 106.68 | 4.200 |
| 264 | X264Z | 250.19 | 9.850 | 242.57 | 9.550 | 109.22 | 4.300 |
| 270 | X270Z | 255.27 | 10.050 | 247.65 | 9.750 | 111.76 | 4.400 |
| 276 | X276Z | 260.35 | 10.250 | 252.73 | 9.950 | 114.30 | 4.500 |
| 282 | X282Z | 265.43 | 10.450 | 257.81 | 10.150 | 116.84 | 4.600 |
| 288 | X288Z | 270.51 | 10.650 | 262.89 | 10.350 | 119.38 | 4.700 |
| 294 | X294Z | 275.59 | 10.850 | 267.97 | 10.550 | 121.92 | 4.800 |
| 300 | X300Z | 280.67 | 11.050 | 273.05 | 10.750 | 124.46 | 4.900 |
| 306 | X306Z | 285.75 | 11.250 | 278.13 | 10.950 | 127.00 | 5.000 |
| 312 | X312Z | 290.83 | 11.450 | 283.21 | 11.150 | 129.54 | 5.100 |
| 318 | X318Z | 295.91 | 11.650 | 288.29 | 11.350 | 132.08 | 5.200 |
| 324 | X324Z | 300.99 | 11.850 | 293.37 | 11.550 | 134.62 | 5.300 |
| 330 | X330Z | 306.07 | 12.050 | 298.45 | 11.750 | 137.16 | 5.400 |
| 336 | X336Z | 311.15 | 12.250 | 303.53 | 11.950 | 139.70 | 5.500 |
| 342 | X342Z | 316.23 | 12.450 | 308.61 | 12.150 | 142.24 | 5.600 |
| 348 | X348Z | 321.31 | 12.650 | 313.69 | 12.350 | 144.78 | 5.700 |
| 354 | X354Z | 326.39 | 12.850 | 318.77 | 12.550 | 147.32 | 5.800 |
| 360 | X360Z | 331.47 | 13.050 | 323.85 | 12.750 | 149.86 | 5.900 |

Ordering data shown is for our standard product offering. For non-standard or custom products, contact your authorized Berg Electronics representative.

17

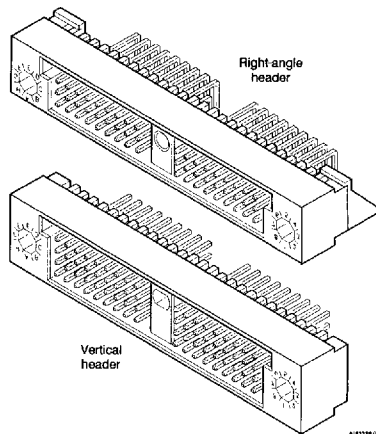
9005411 0002691 643

PCB Mounted Headers and Shrouds

High Pin Count (HPC™)

2.54 mm (0.100 in.) Centerlines

3- and 4-Row Vertical and Right-Angle Headers Self-Retaining and Slip-On Shrouds 0, 1, and 2 Guide Pins



Features

- 3-Row: 30 through 450 positions.
- 4-Row: 40 through 600 positions.
- Polyphenylene sulfide (PPS) housing for IR and vapor-phase soldering.
- Plated with gold or Berg's exclusive GXT™ (palladium-nickel alloy with gold flash).
- Made with 0.64 mm (0.025 in.) drawn-wire pins.
- 3- and 4-row shrouds for all header sizes.
- All mounting brackets are pre-assembled.
- Hardware for mounting, power and static discharge, guidance, and keying.
- Radiused pin tip for lower insertion force.


Options


- Solder-tail or press-fit pins.
- Three mating pin lengths for first-make--last-break applications.
- Selective loading of pins.
- Various tail lengths.

Mating Data

| Berg Electronics Products | Page |
|--------------------------------|-------|
| ▪ HPC™ Right-Angle Receptacles | 17-18 |

Approvals and Certifications

 File no. E66906

 File no. LR46923

Application Equipment

| Berg Electronics Products | Page |
|--------------------------------|-------|
| ▪ HPC™ Header Installation Kit | 17-51 |

Technical Data

Materials

- Housing Glass-filled PPS (UL-94 V-0)
 - ▶ Color Black
- Pin Phosphor-bronze, 3/4 hard per ASTM B-159

Electrical Performance

- Insulation resistance $\geq 1000 \text{ M}\Omega$ after environmental test conditions
- Withstanding voltage $\geq 1000 \text{ V ac rms}$, 60 Hz at sea level
- Current rating
 - ▶ All contacts powered 1.0 amp continuous per contact
 - ▶ One contact powered 3.0 amp continuous per contact

- Contact resistance $< 20 \text{ m}\Omega$ (mated system) after environmental conditions

Mechanical Performance

- Normal force 0.54 N (60 gf) typical; 0.49 N (50 gf) min, 200 kpsi Hertz stress

Environmental Properties

- Temperature range -65°C to $+125^\circ\text{C}$

Packaging

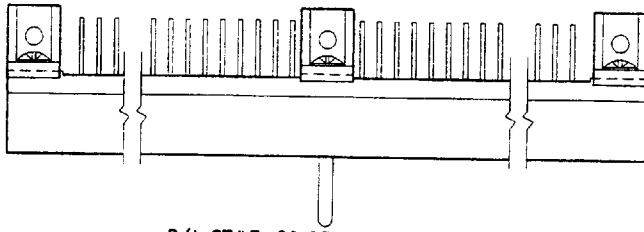
- Antistatic tubes

Customer Support Materials

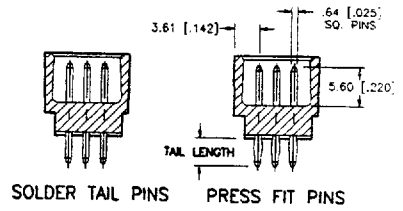
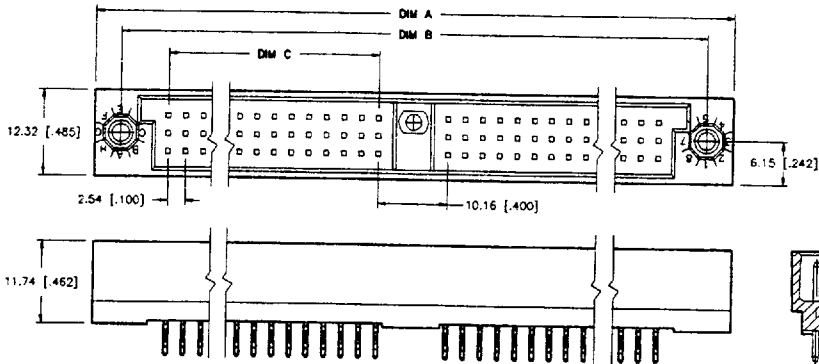
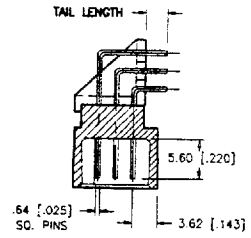
| Description | Order No. | Description | Order No. |
|---------------------------|-------------|-----------------|--------------|
| Customer Product Drawings | By Part No. | Product Samples | Upon Request |
| Product Specifications | BUS-12-090 | | |

9005411 0002686 286

Description
3-Row Vertical and Right-Angle Headers
Compliant Press-Fit or Solder-Tail Pins
1 Guide Hole



R/A STYLE, SOLDER TAIL PINS ONLY



SOLDER TAIL PINS PRESS FIT PINS