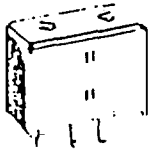


TOKO, INC.

Helical filter CBW

Customer:

CBW

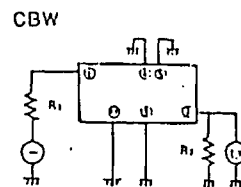
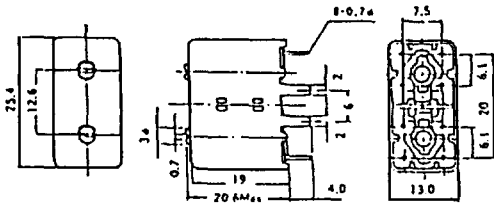


Sample No.	Test Frequency fo (MHz)	Bandwidth ( 1 db ) ( MHz )	Selectivity		Ripple ( db )	IL ( db )	Tuning range ( MHz )
			fo+10MHz ( db )	fo-10MHz ( db )			
271MT-1146A	129	2.0 min.	20 min.	20 min.	1.0 max.	3.5 max.	127 - 132
271MT-1134A	138	2.2 min.	18 min.	20 min.	1.0 max.	2.5 max.	134 - 142
271MT-1135A	145	2.4 min.	17 min.	20 min.	1.0 max.	2.5 max.	142 - 151
271MT-1140A	151	2.4 min.	16 min.	18 min.	1.0 max.	2.5 max.	147 - 155
271MT-1141A	160	2.4 min.	17 min.	19 min.	1.0 max.	3.0 max.	155 - 165
271MT-1136A	167	2.4 min.	17 min.	19 min.	1.0 max.	2.5 max.	162 - 171
271MT-1142A	176	2.6 min.	15 min.	16 min.	1.0 max.	2.5 max.	170 - 182
271MT-1143A	187	2.8 min.	14 min.	15 min.	1.0 max.	2.5 max.	180 - 195
271MT-1144A	203	2.8 min.	14 min.	15 min.	1.0 max.	3.0 max.	195 - 212
271MT-1145A	216	3.0 min.	14 min.	15 min.	1.0 max.	3.0 max.	207 - 225

Dimensions. (mm)

Connection (Bottom view)

Impedance : 50Ω / 50Ω



\*TOKOS00250\*

\* Date: Dec. 18th, 1989

830511A