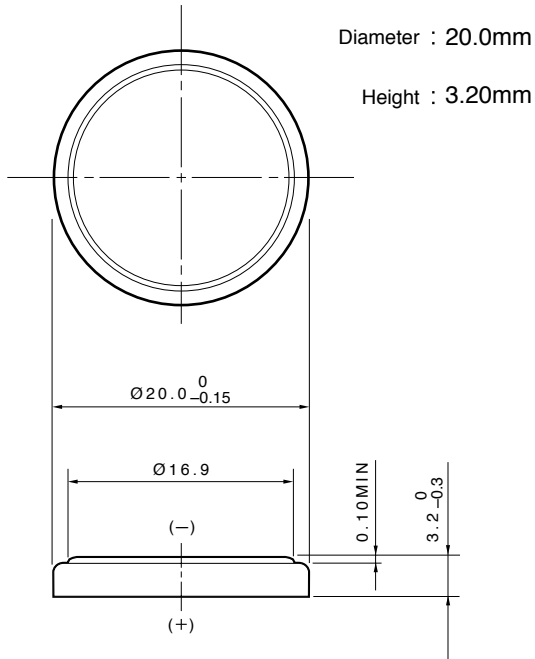


**Lithium Manganese Dioxide Battery** **CR2032**

■ **Dimensions (mm)**



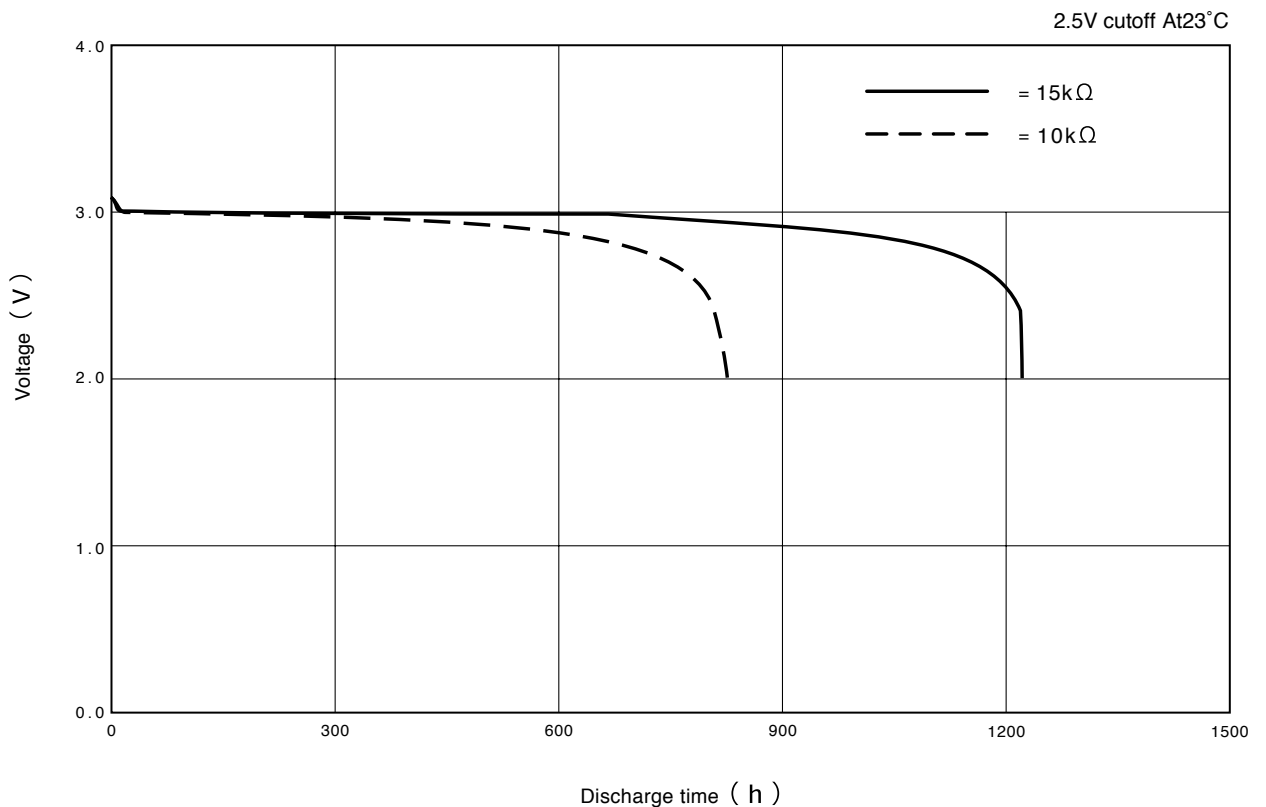
■ **Specifications**

|                                |               |
|--------------------------------|---------------|
| Nominal Voltage                | <b>3V</b>     |
| Nominal Capacity (2.5V cutoff) | <b>220mAh</b> |
| Recommended Continuous Drain   | <b>0.3mA</b>  |
| Recommended Pulse Drain        | <b>12mA</b>   |
| Weight                         | <b>3.2g</b>   |

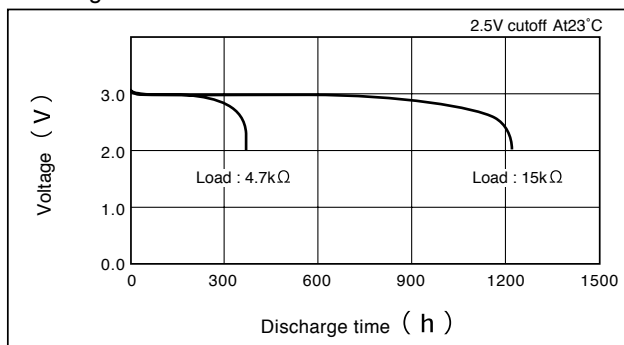
**Applications**

- Electronic Watch or Clock ● Card Radio
- Remote Controller ● Electronic Game, Toy
- Memory Back-up Power Source for SRAM or Real Time Clock (RTC)

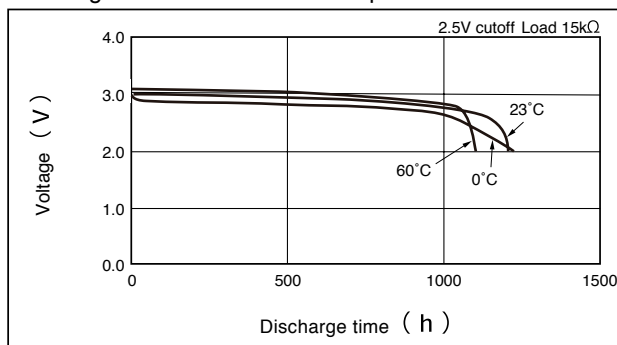
■ **Discharge Characteristics**



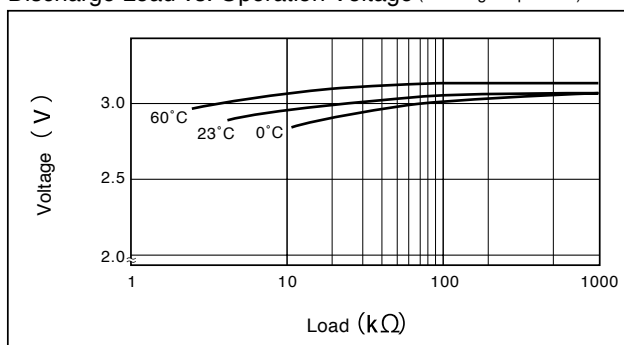
**Discharge Characteristics on Load**



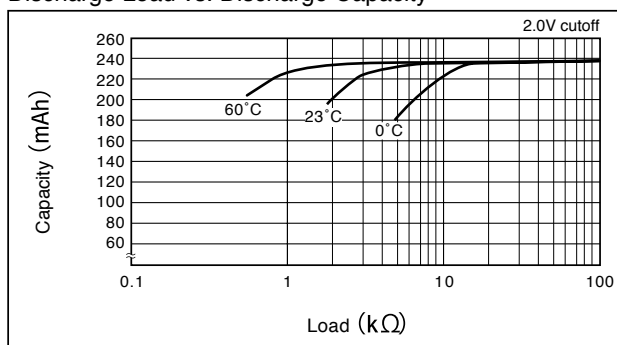
**Discharge Characteristics on Temperature**



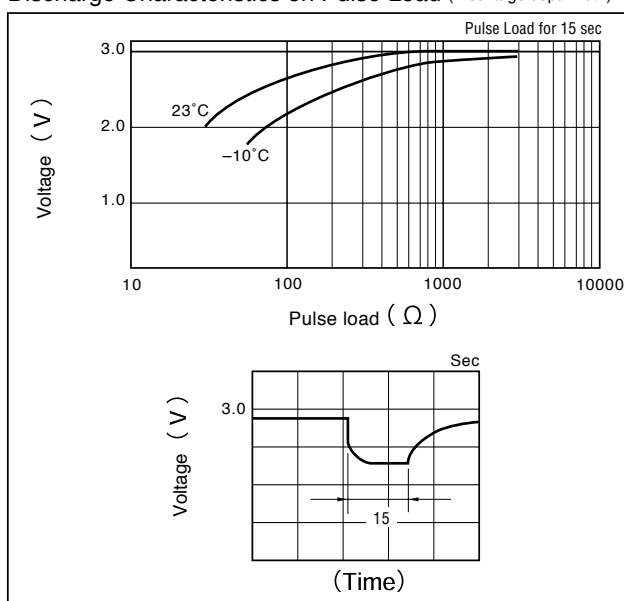
**Discharge Load vs. Operation Voltage (Discharge depth 40%)**



**Discharge Load vs. Discharge Capacity**



**Discharge Characteristics on Pulse Load (Discharge depth 40%)**



**Storage Characteristics**

