

## ABSOLUTE MAXIMUM RATINGS

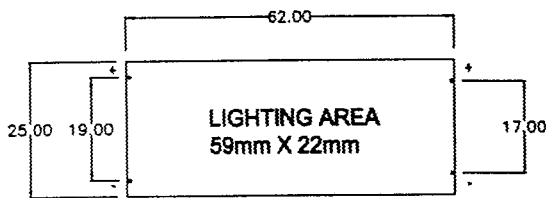
Forward Current	$I_F$	200mA
Reverse Voltage	$V_R$	10V
Operating Temperature	$T_{opr}$	-20 to +70°C
Storage Temperature	$T_{stg}$	-30 to +80°C

## ELECTRO-OPTICAL CHARACTERISTICS (Ta=25°C)

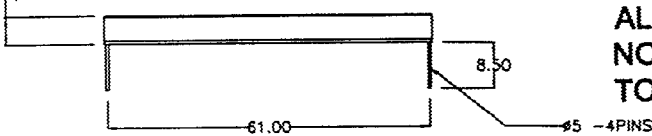
PARAMETER	SYMBOL	MIN	TYP	MAX	UNIT	CONDITIONS	
Forward Voltage	1623R	$V_F$	3.6	3.9	5	V	$I_F=100mA$
	1623RO		3.6	3.9	5		
	1623Y		3.8	4.1	4.4		
Reverse Current	$I_R$			100	$\mu A$	$V_R=10V$	
Peak Wavelength	1623R	$\lambda_p$		650	nm	$I_F=100mA$	
	1623RO			630			
	1623Y			595			
Spectral Line Half Width	1623R	$\Delta\lambda$		35	nm	$I_F=100mA$	
	1623RO			35			
	1623Y			40			
Brightness	1623R	B	60		cd/m <sup>2</sup>	$I_F=100mA$	
	1623RO		60				
	1623Y		40				

## MECHANICAL OUTLINE

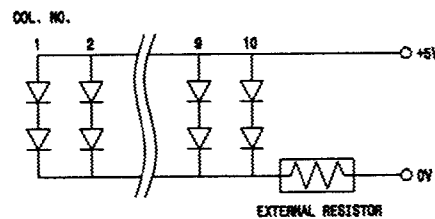
## CIRCUIT DIAGRAM



5.30 MAX.  
(INCLUDED PLASTIC PADS)



ALL DIMENSION IN MM  
NO SCALE  
TOL.: +/-0.3MM



MICRO ELECTRONICS LTD.

38 Hung To Road, Microtron Building, Kwun Tong, Kowloon, Hong Kong.

Kwun Tong P.O. Box 69477 Hong Kong. Fax No. 2341 0321 Telex:43510 Micro Hx. Tel: 2343 0181-5