

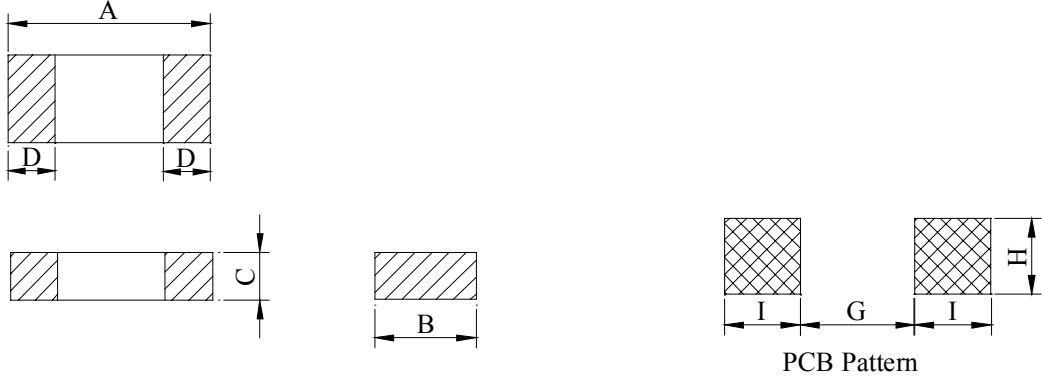
SPECIFICATION FOR APPROVAL

REF :

PAGE: 1

PROD. NAME	MULTILAYER CHIP BEAD	ABC'S DWG NO.	MU1005□□□□5□
		ABC'S ITEM NO.	

I . CONFIGURATION & DIMENSIONS :



Unit : m/m

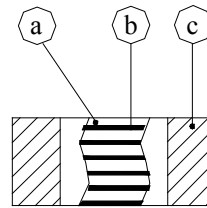
Series	A	B	C	D	G	H	I
MU1005	1.00±0.15	0.50±0.15	0.50±0.15	0.25±0.10	0.4	0.4	0.5

II . SCHEMATIC DIAGRAM :



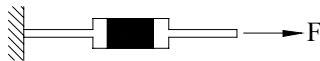
III . MATERIALS :

- a . Body : Ferrite
- b . Internal conductor : Silver or Ag / Pd
- c . Terminal electrode : Ag/Ni/Sn (Lead content 100ppm max.)
- d . Remark : Lead content 1000ppm max. include ferrite



IV . GENERAL SPECIFICATION :

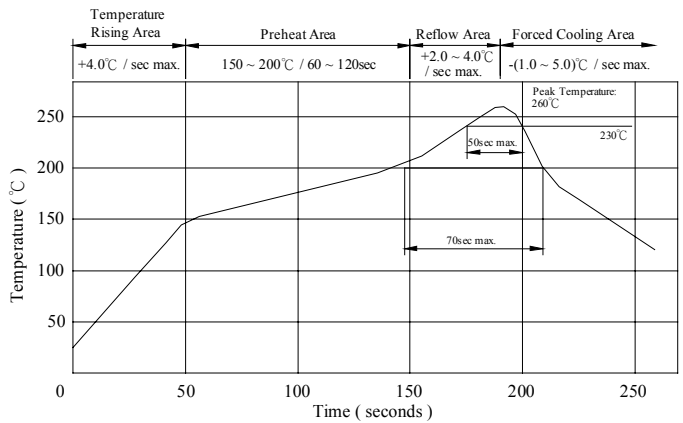
- a . Storage temp. : -40 ---- +105°C
- b . Operating temp. : -25 ---- +85°C
- c . Terminal Strength :



Type	F (kgf)	time (sec)
MU1005	0.3	30±5

- d . Solderability : Preheat : 150±25°C for 60 seconds
 Solder : Sn96.5 / Ag3 / Cu0.5 or equivalent
 Solder temp. : 260±5°C
 Flux : Rosin
 Dip time : 4±1 seconds

Peak Temp : 260°C max.
 Max time above 230°C : 50sec max.
 Max time above 200°C : 70sec max.



AE-001A

SPECIFICATION FOR APPROVAL

REF :

PAGE: 2

PROD. NAME	MULTILAYER CHIP BEAD	ABC'S DWG NO.	MU1005□□□□5□
		ABC'S ITEM NO.	

V . ELECTRICAL CHARACTERISTICS :

DWG No.	Impedance (Ω)	Z Test Freq. (MHz)	RDC (Ω) max.	Ir (mA) max.
MU1005100Y5□	5 ~ 15	100	0.05	500
MU1005300Y5□	30.0±25%	100	0.20	300
MU1005700Y5□	70.0±25%	100	0.30	200
MU1005121Y5□	120.0±25%	100	0.40	200
MU1005221Y5□	220.0±25%	100	0.50	100
MU1005301Y5□	300.0±25%	100	0.60	100
MU1005421Y5□	420.0±25%	100	0.80	100
MU1005601Y5□	600.0±25%	100	0.90	100
MU1005102Y5□	1000.0±25%	100	1.20	100

1). □ : Packaging Information... A : Bulk B : Taping Reel

VI . IMPEDANCE VS. FREQUENCY CHARACTERISTICS :

MU1005-100

MU1005-300

MU1005-700

MU1005-121

MU1005-221

MU1005-301

MU1005-421

MU1005-601

MU1005-102

SPECIFICATION FOR APPROVAL

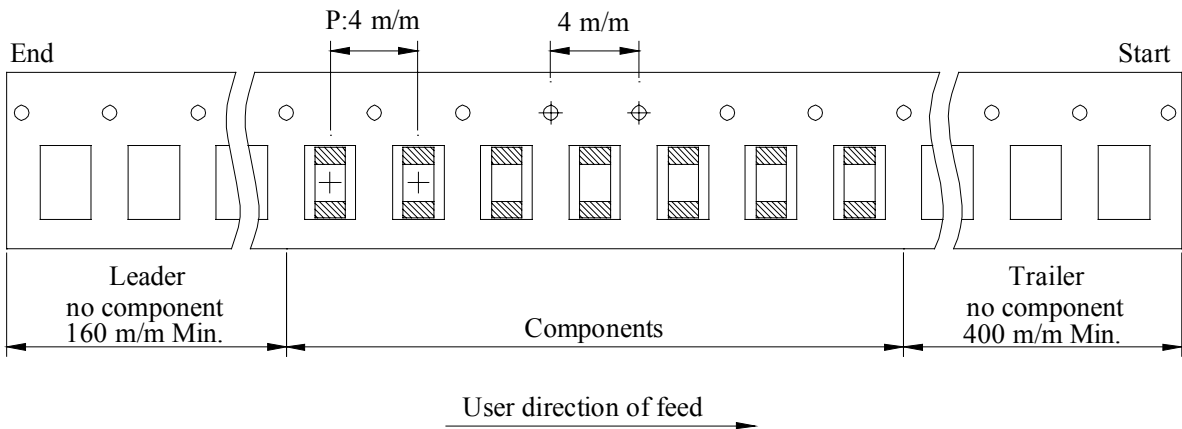
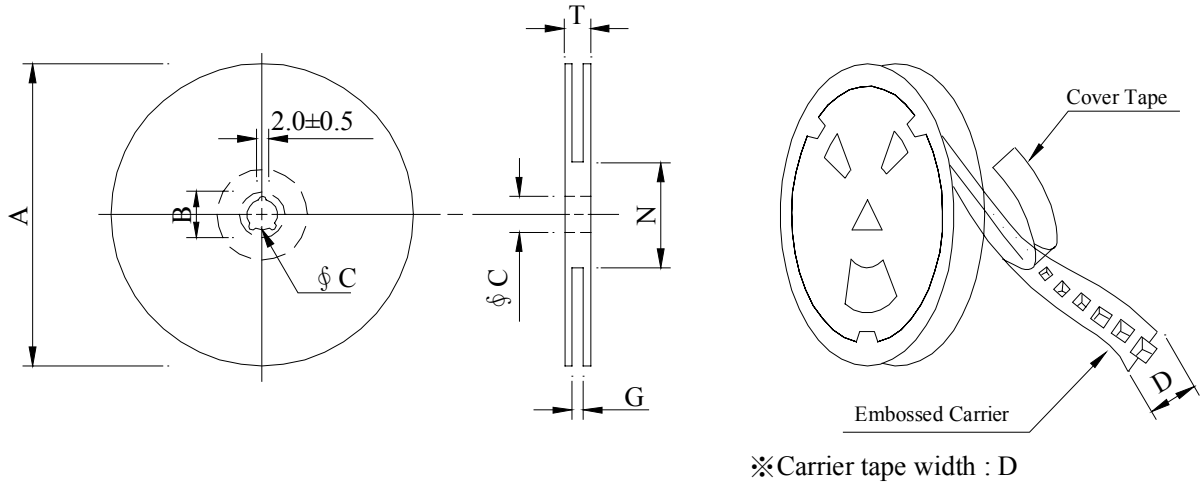
REF :

PAGE: 3

PROD. NAME	MULTILAYER CHIP BEAD	ABC'S DWG NO.	MU1005□□□□5□
		ABC'S ITEM NO.	

VII . PACKAGING INFORMATION

(1) Confiuration



(2) Dimensions

Unit:m/m

Style	A	B	C	D	G	N	T
07 - 08	178	21±0.8	13	8	10 ⁺⁰	50 ⁻⁰	12.5

(3) Q'TY & G.W. Per package

Series	Inner : Reel			Outer : Carton		
	Q'TY (pcs)	G.W. (gw)	Style	Q'TY(pcs)	G.W. (Kg)	Size (cm)
MU1005	10,000	60	07 - 08	500,000	5.5	41 x 39 x 22

AE-001A

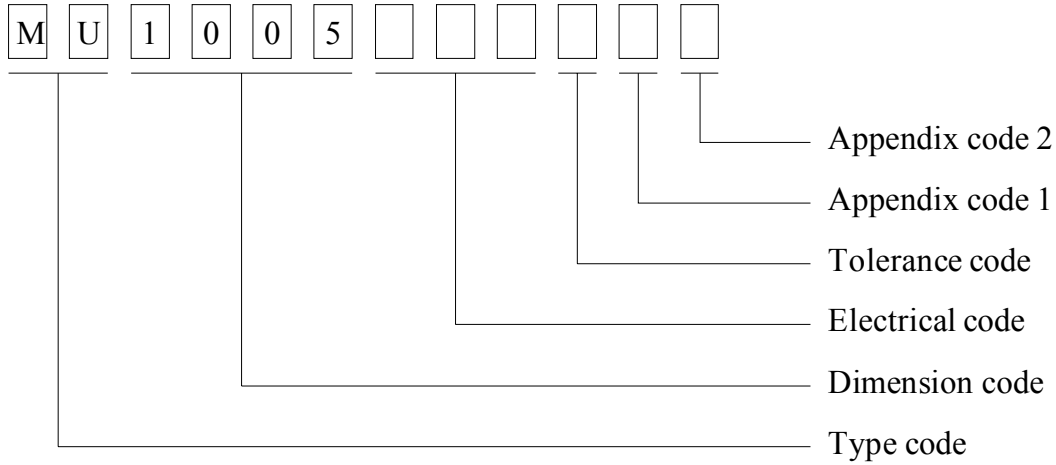
SPECIFICATION FOR APPROVAL

REF :

PAGE: 4

PROD. NAME	MULTILAYER CHIP BEAD	ABC'S DWG NO.	MU1005□□□□5□
		ABC'S ITEM NO.	

VIII . DWG EXPRESSION :



- Appendix code 1 : S : Standard products
 A ~ K , M ~ R , T ~ Z : Special products
 L : Standard Lead Free products
 1 ~ 9 : Special Lead Free products

Appendix code 2 :

Code	Inner package	Inner package Q'TY	Remark
A	Empty	Empty	
B	T / R (Reel package)	10000 pcs	