

T-47-13

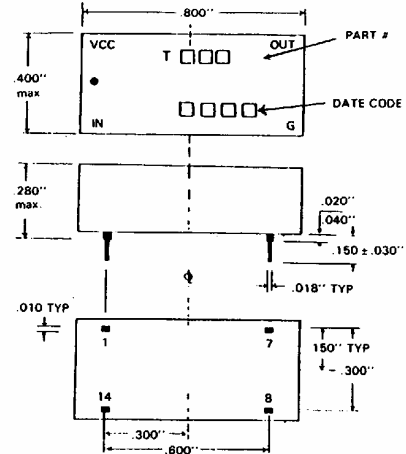
SPECIFICATIONS:

- Operating temperature range 0°C to +70°C (-55°C to +125°C on request).
- Supply voltage: 5.0 ± 0.25VDC.
- Supply Current: ICCH 30mA max. ICCL 60mA max.
- Input pulse amplitude: 3.2volts.
- Input pulse width: min 100% of total delay.
- Input pulse PPR: min 3 × pulse width.
- Input rise time: 2.0ns.

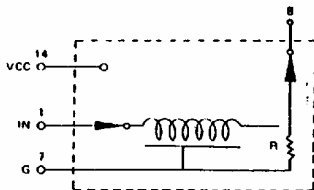
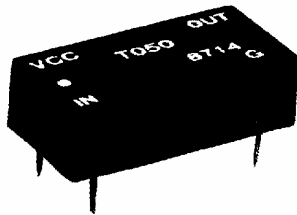
Notes:

- (1) Delay measured at 1.5 volts on leading edge only with no loads on output.
- (2) Rise time measured from 0.75 volts to 2.4 volts.
- (3) Others upon request.

MECHANIC:



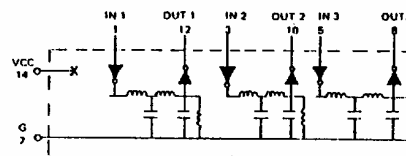
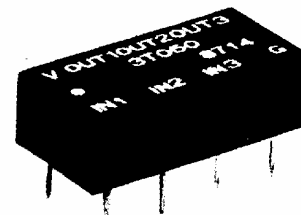
T



| PART NO. | TOTAL DELAY (ns) | TAP TO TAP (ns) |
|----------|------------------|-----------------|
| T010 | 10±1.5 | 4 |
| T020 | 20±1.5 | 4 |
| T030 | 30±2 | 4 |
| T040 | 40±2 | 4 |
| T050 | 50±2.5 | 4 |
| T060 | 60±3 | 4 |
| T070 | 70±3.5 | 4 |
| T080 | 80±4 | 4 |
| T090 | 90±4.5 | 4 |
| T100 | 100±5 | 4 |

| PART NO. | TOTAL DELAY (ns) | TAP TO TAP (ns) |
|----------|------------------|-----------------|
| T125 | 125±6.2 | 4 |
| T150 | 150±7.5 | 4 |
| T175 | 175±8.7 | 4 |
| T200 | 200±10 | 4 |
| T250 | 200±10 | 4 |
| T300 | 250±12.5 | 4 |
| T350 | 300±15 | 4 |
| T400 | 400±20 | 4 |
| T450 | 450±22.5 | 4 |
| T500 | 500±25 | 4 |

3T



| PART NO. | TOTAL DELAY (ns) | TAP TO TAP (ns) |
|----------|------------------|-----------------|
| 3T010 | 10±1.5 | 4 |
| 3T020 | 20±1.5 | 4 |
| 3T030 | 80±4 | 4 |
| 3T040 | 40±2 | 4 |
| 3T050 | 50±2.5 | 4 |

| PART NO. | TOTAL DELAY (ns) | TAP TO TAP (ns) |
|----------|------------------|-----------------|
| 3T060 | 60±3 | 4 |
| 3T070 | 70±3.5 | 4 |
| 3T080 | 80±4 | 4 |
| 3T090 | 90±4.5 | 4 |
| 3T100 | 100±5 | 4 |