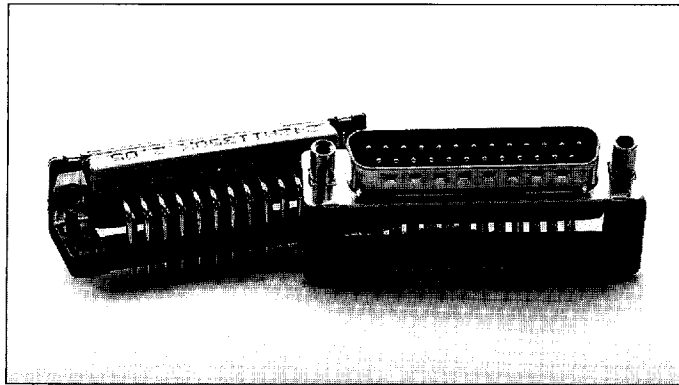


Filter connectors

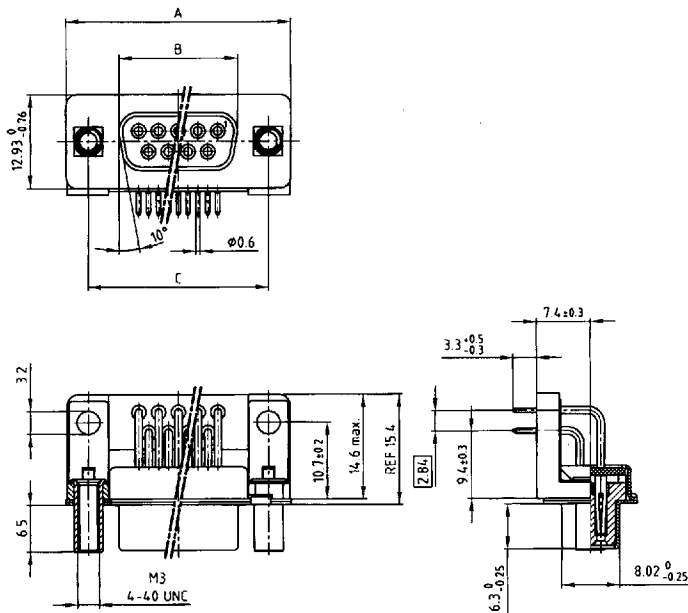


This right angle version incorporates a front locking bolt. The hexlocking bolts that are normally used are no longer required. The front locking bolt is securely riveted and due to its square design prevents overtorque that is normally associated with conventional round inserts. The locking bolt is available with UNC 4-40 or M 3 internal thread.

•370 inch

Solder pin angled with threaded lock, mounting- and grounding bracket

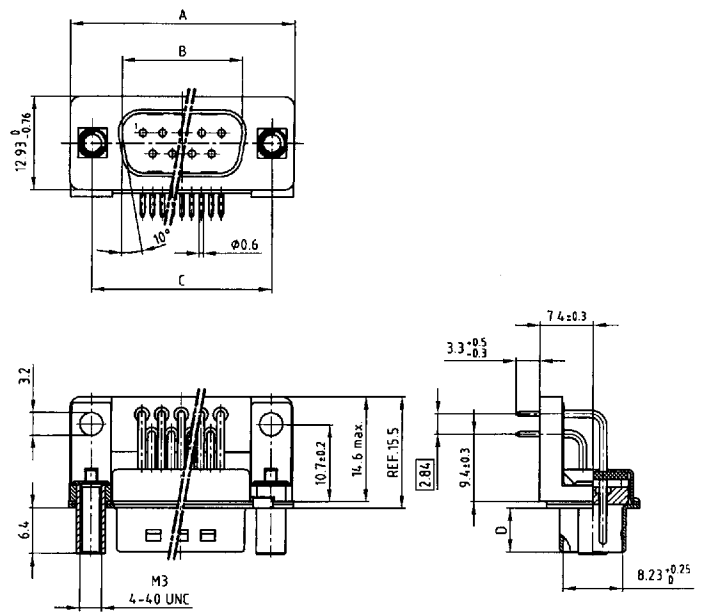
Socket connector



Kat 1 i C7A

No. of pos.	A - 0,76	B - 0,25	C
9	31,19	16,46	25,00 ±0,12
15	39,52	24,79	33,30 ±0,15
25	53,42	38,50	47,04 ±0,13
37	69,70	54,96	63,50 ±0,13

Plug connector



Kat 1 i C8A

No. of pos.	A - 0,76	B + 0,25	C	D - 0,30
9	31,19	16,79	25,00 ±0,12	6,12
15	39,52	25,12	33,30 ±0,15	6,12
25	53,42	38,84	47,04 ±0,13	5,99
37	69,70	55,30	63,50 ±0,13	5,99

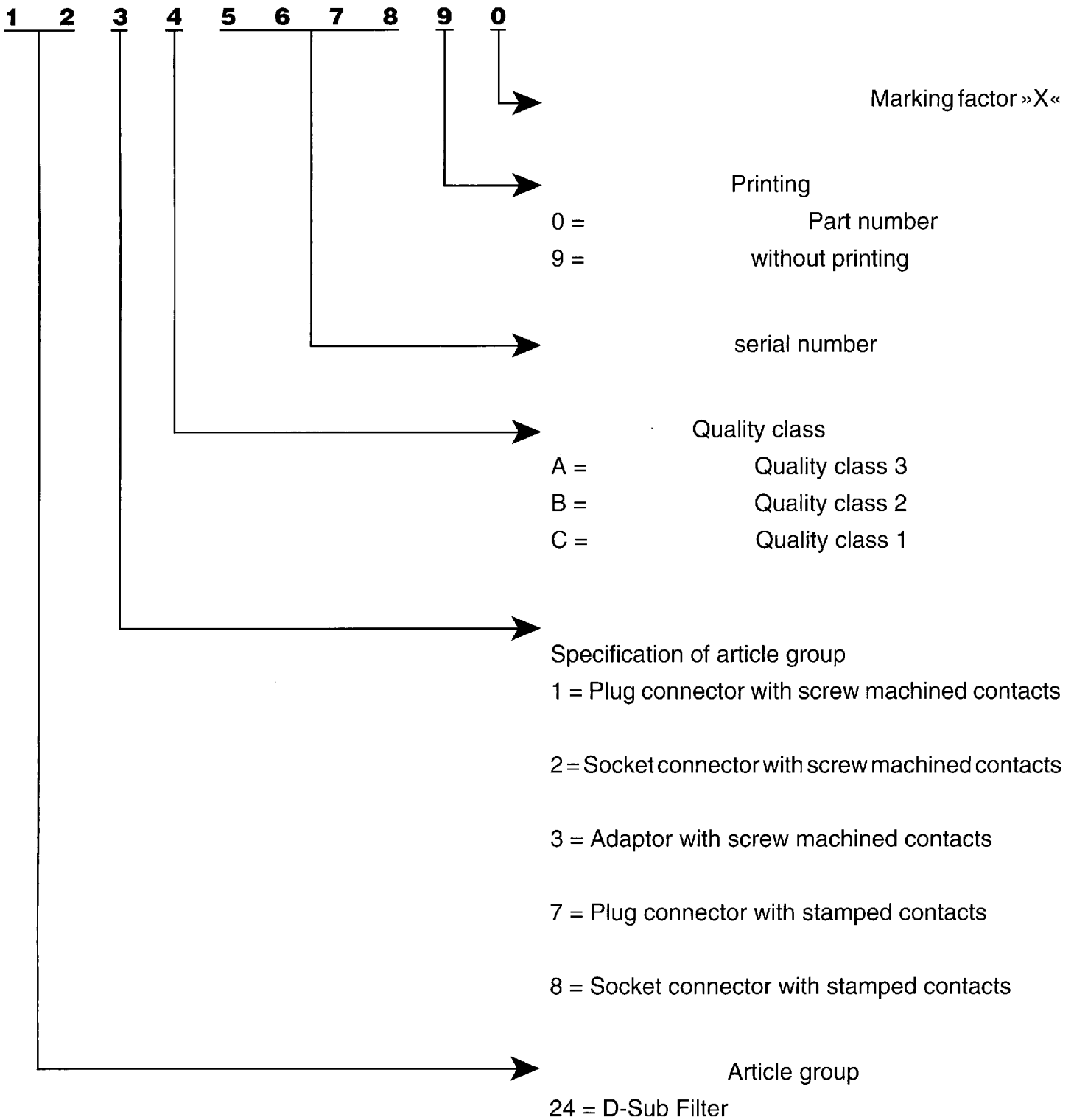
Part numbers

No. of Pos.	Socket connector – Solder pin angled			
	Typ 1	Typ 3	Typ 4	Typ 5
9	242 A 16900 X	242 A 11330 X	242 A 11410 X	242 A 11370 X
15	242 A 16910 X	242 A 11340 X	242 A 11420 X	242 A 11380 X
25	242 A 16920 X	242 A 11350 X	242 A 11430 X	242 A 11390 X
37	242 A 16930 X	242 A 11360 X	242 A 11440 X	242 A 11400 X
9	242 A 16940 X	242 A 11450 X	242 A 11530 X	242 A 11490 X
15	242 A 16950 X	242 A 11460 X	242 A 11540 X	242 A 11500 X
25	242 A 16960 X	242 A 11470 X	242 A 11550 X	242 A 11510 X
37	242 A 16070 X	242 A 11480 X	242 A 11560 X	242 A 11520 X

No. of Pos.	Plug connector – Solder pin angled			
	Typ 1	Typ 3	Typ 4	Typ 5
9	241 A 19520 X	241 A 11330 X	241 A 11410 X	241 A 11370 X
15	241 A 19530 X	241 A 11340 X	241 A 11420 X	241 A 11380 X
25	241 X 19540 X	241 A 11350 X	241 A 11430 X	241 A 11390 X
37	241 A 19550 X	241 A 11360 X	241 A 11440 X	241 A 11400 X
9	241 A 19560 X	241 A 11450 X	241 A 11530 X	241 A 11490 X
15	241 A 19570 X	241 A 11460 X	241 A 11540 X	241 A 11500 X
25	241 A 19580 X	241 A 11470 X	241 A 11550 X	241 A 11510 X
37	241 A 19590 X	241 A 11480 X	241 A 11560 X	241 A 11520 X

Filter connectors

Part number

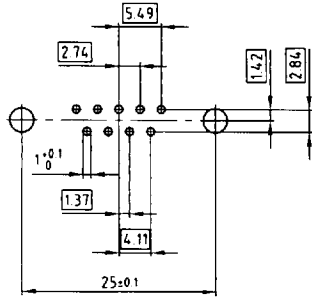


Order example

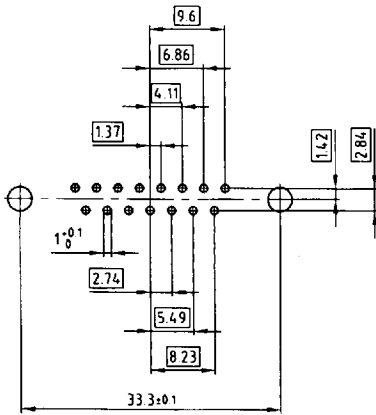
Plug connector solder pin angled 25 pos.		
Quality class	with screw machine contacts	with stamped contacts
3	241 A 12900 X	247 A 12900 X
2	241 B 12900 X	247 B 12900 X
1	241 C 12900 X	247 C 12900 X

Hole pattern for straight and angled solder pins D-Sub filter

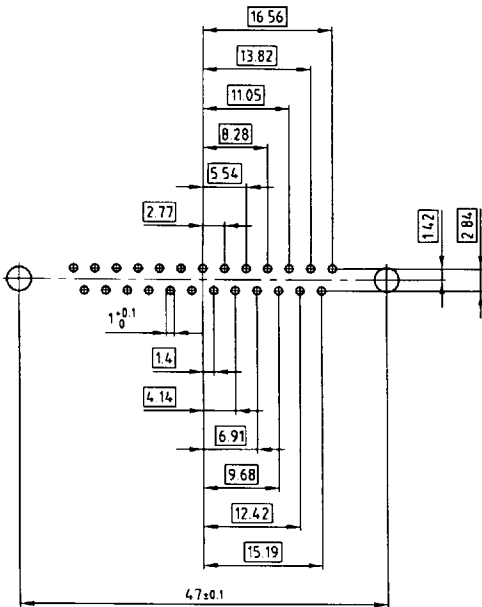
9 pos



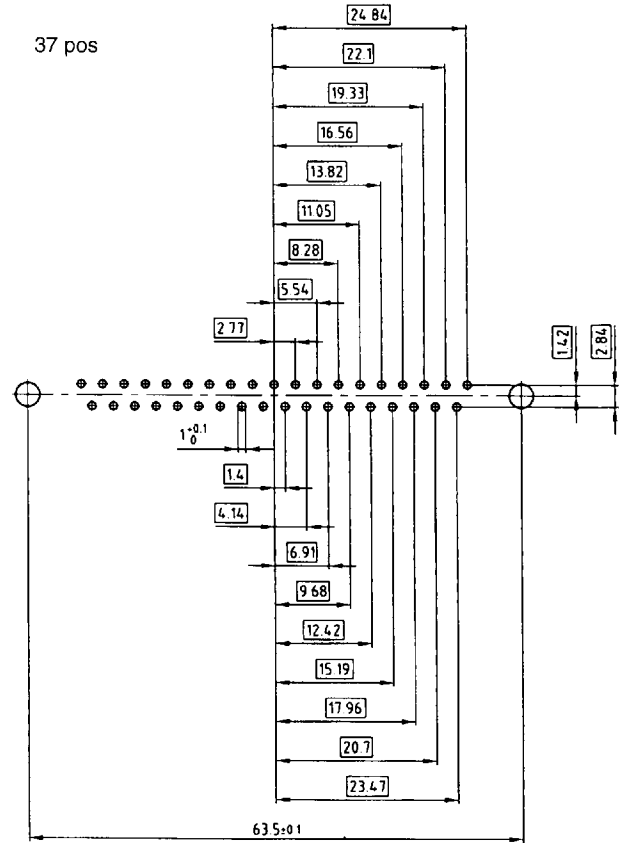
15 pos



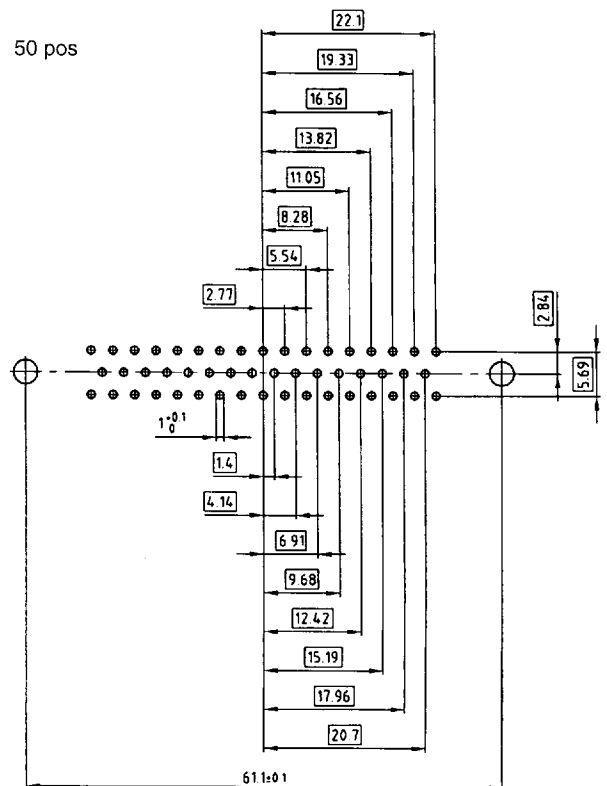
25 pos



37 pos



50 pos



Technical Data	D-Sub Standard 9,15,25,37,50 pos.	D-Sub High Density 15,26,44,62 pos.
Insulators	Polyester GF UL 94 V-0	PA 6.6 GF 25 UL 94 V-0
Contacts	Copper alloy	
Contact finish	hard-gold-plated over nickel, solder area tin plated	
Shell	steel tin plated over nickel	
Working voltage	100 V _{DC} Insulation Gr. A according to VDE 0100 *	60 V _{DC} Insulation Gr. A according to VDE 0100 *
Dielectric stand. voltage	424 V _{DC} standard 707 V _{DC} „high voltage“	424 V _{DC}
Contact resistance	max. 10mΩ with no load Δ R max. 10 mΩ with load according to din 41652 part. 2	
Insulation resistance	depending on quality class 1 ≥ 10 ¹² Ω 2 ≥ 10 ¹¹ Ω 3 ≥ 10 ⁸ Ω	
Current rating	straight version: 5,0 A (20° C) angled version: 2,5 A (20° C)	straight version: 3,0 A (20° C) angled version: 2,5 A (20° C)
Voltage surge 10/750 μs	300 V standard 500 V „high voltage“	300 V standard
Mating-/ unmating forces	9-pol. ≤ 30/29 N 15-pol. ≤ 50/33 N 25-pol. ≤ 83/56 N 37-pol. ≤ 123/82 N 50-pol. ≤ 167/111 N	15-pol. ≤ 50/33 N 26-pol. ≤ 83/56 N 44-pol. ≤ 110/74 N
Temperature range storage	- 55° C /to + 125° C	
Temperature range working	- 25° C /to + 105° C	- 25° C /to + 85° C
Humidity	40° C / 85% relative	
Capacitor values	/type 1 min. 144 pF max. 216 pF /type 2 min. 240 pF max. 360 pF /type 3 min. 296 pF max. 444 pF /type 4 min. 664 pF max. 996 pF /type 5 min. 1040 pF max. 1560 pF	/type 3 min. 296 pF max. 444 pF /type 4 min. 664 pF max. 996 pF
Quality class	/Quality class 3 = 50 mating cycles /Quality class 2 = 200 mating cycles /Quality class 1 = 500 mating cycles	