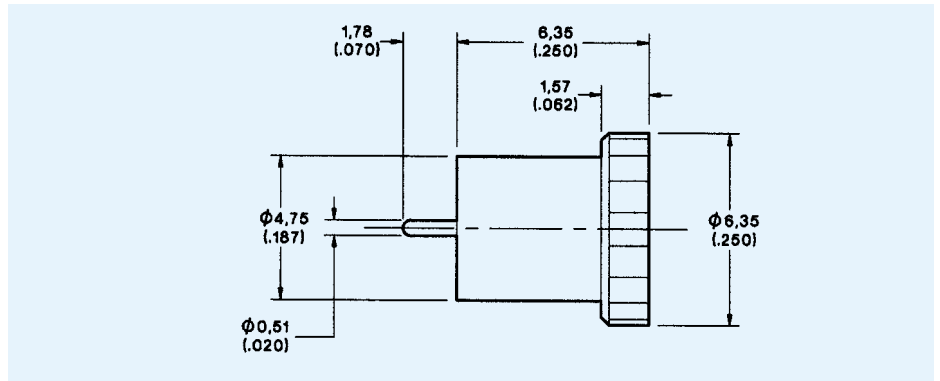


Plugs / Jacks / Adaptors / Receptacles

Bulkhead Plug, Stub Contact, Press-in Mount

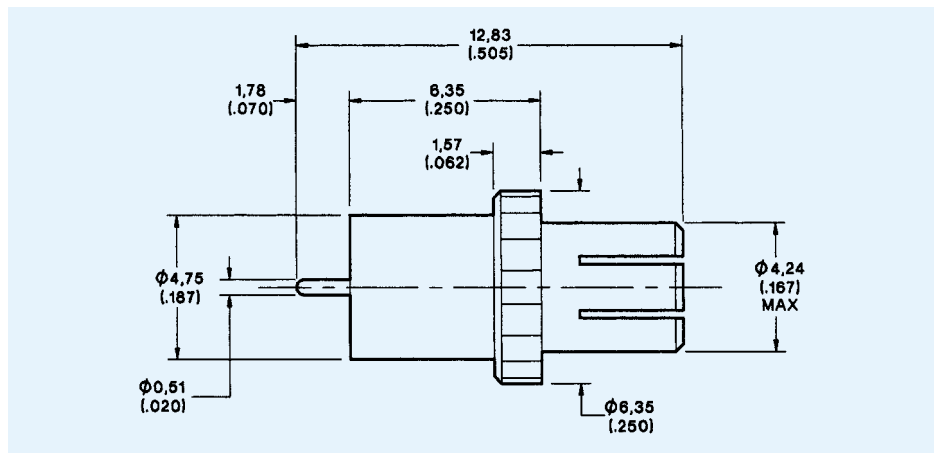
Part Number
052-946-0039310



Mounting Plan EE (Page 109)

Bulkhead Jack, Stub Contact, Press-in Mount

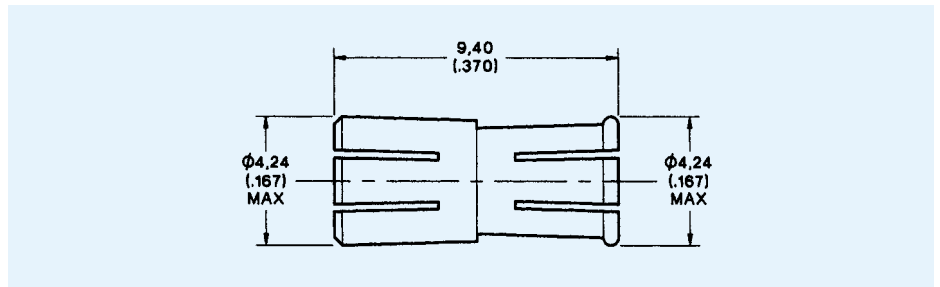
Part Number
052-943-0089220



Mounting Plan EE (Page 109)

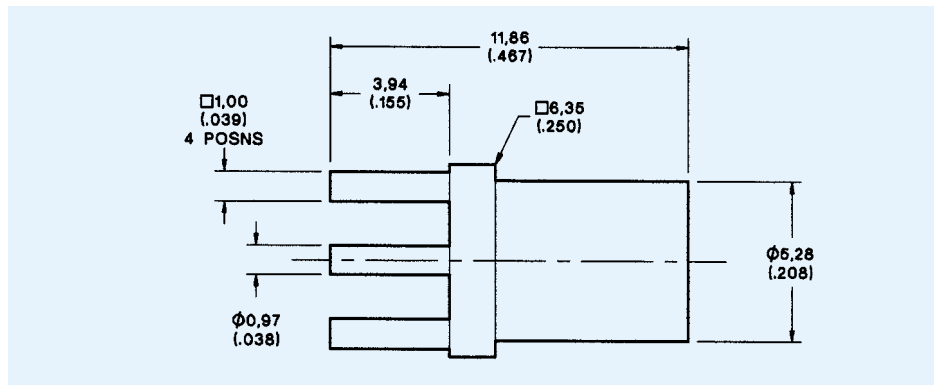
Jack-to-Jack Adaptor

Part Number
052-972-0019220



Plug Receptacle, PCB Mount

Part Number
052-952-0000310



Mounting Plan A (Page 108)