

# Gas Discharge Tube: GD8 Series



## 2-Electrode $\Phi 8.0 \times T6$ mm Type

### ■ Features

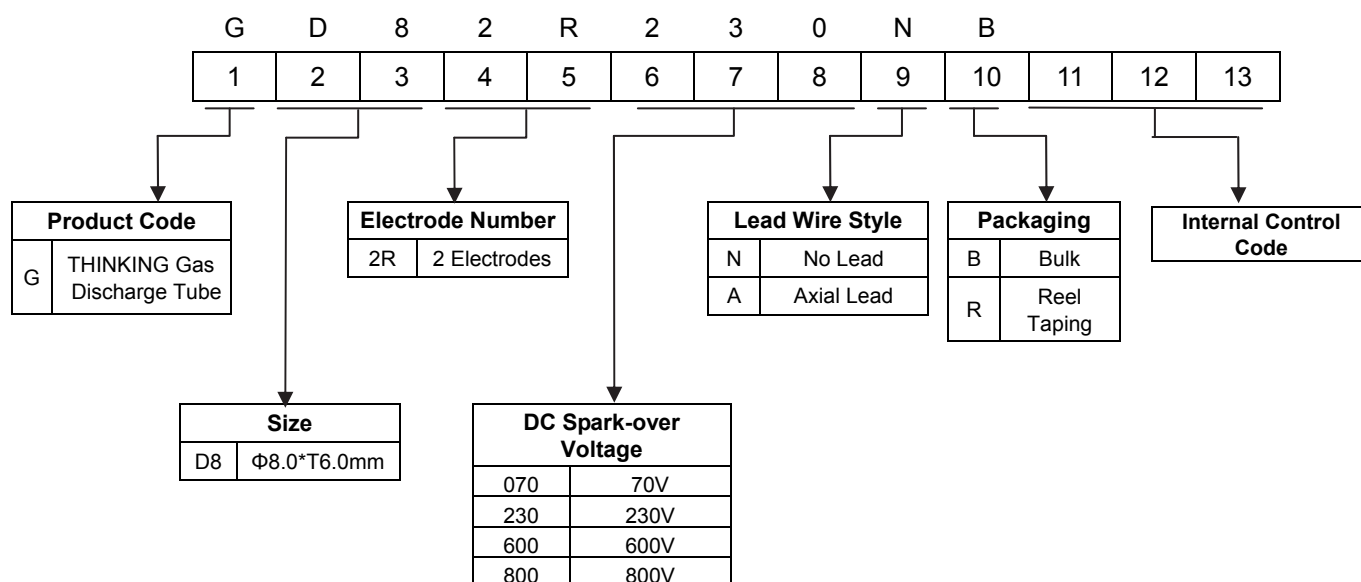
1. RoHS & HF compliant
2. Rugged ceramic-metal construction
3. Available with or without leads
4. DC spark-over voltage: 70~800V
5. Low capacitance
6. Agency recognition: UL / cUL
7. Operating temperature :  $-30^{\circ}\text{C} \sim +85^{\circ}\text{C}$   
Storage temperature:  $-40^{\circ}\text{C} \sim +115^{\circ}\text{C}$



### ■ Recommended Applications

1. Cable Modem
2. xDSL
3. Set-Top Box
4. TV sets
5. Power supplier
6. Consumer electronics

### ■ Part Number Code



# Gas Discharge Tube: GD8 Series



## 2-Electrode $\Phi 8.0 \times T6$ mm Type

### ■ Characteristics

Part No.	DC Spark-over Voltage	Max. Impulse Breakdown Voltage		Max. Impulse Discharge Current (8/20 $\mu$ s)		Impulse Life (10/1000 $\mu$ s)	Normal Alternating Discharge Current		DC Holdover Voltage	Minimum Insulation Resistance	Maximum Capacitance (1MHz)	Safety approvals	
	100V/S	100V/ $\mu$ s	1KV/ $\mu$ s	1 time	10 times	100A	50Hz, 1Sec	Single 9 Cycles	<150ms				
	(V)	(V)	(V)	(KA)		(Times)	(A)		(V)				
GD82R070□	70 $\pm$ 20%	500	600	15	10	500	5	65	52	1	1.5		√
GD82R075□	75 $\pm$ 20%	500	600						52			√	
GD82R090□	90 $\pm$ 20%	500	600						52			√	
GD82R120□	120 $\pm$ 20%	500	700						52			√	
GD82R130□	130 $\pm$ 20%	500	700						52			√	
GD82R145□	145 $\pm$ 20%	500	700						52			√	
GD82R230□	230 $\pm$ 20%	500	700						80			√	
GD82R250□	250 $\pm$ 20%	500	700						135			√	
GD82R300□	300 $\pm$ 20%	700	900						150			√	
GD82R350□	350 $\pm$ 20%	700	900						150			√	
GD82R400□	400 $\pm$ 20%	800	1000						150			√	
GD82R470□	470 $\pm$ 20%	900	1100	150	√								
GD82R600□	600 $\pm$ 20%	1100	1300	10	5	150		√	√				
GD82R800□	800 $\pm$ 20%	1300	1500			150		√	√				

Note1: The first □ is the style of lead wire, and the second □ is packaging.

Note2: UL 497B File No: E245070, UL 1449 3rd File No:E314979

Note 3: Insulation resistance test conditions:

DC Spark-over Voltage	DC Measuring Voltage
70-90V	50V
120-400V	100V
470-800V	250V

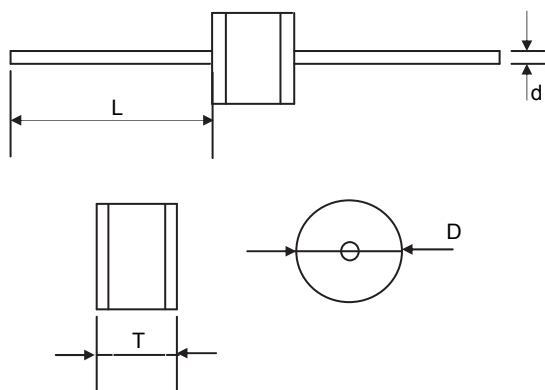
# Gas Discharge Tube: GD8 Series



## 2-Electrode $\Phi 8.0 \times T6$ mm Type

### Dimension

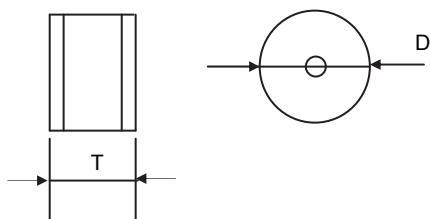
□ = A (Axial lead type)



Unit: mm

Item	Dimensions	
	Spec.	Tolerance
D	8.0	+0.3/-0.5
T	6.0	+0.3/-0.5
L	20	Min.
d*	0.8	±0.05

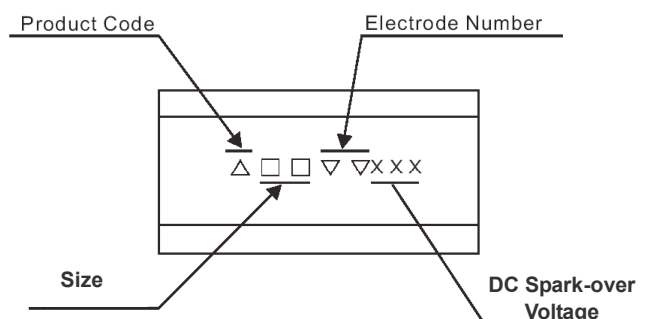
□ = N (No lead type)



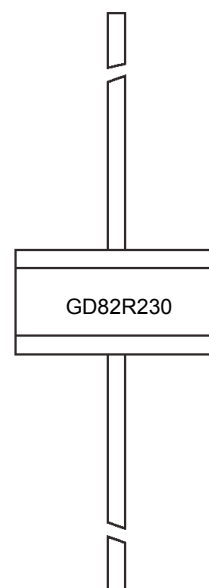
Unit: mm

Item	Dimensions	
	Spec.	Tolerance
D	8.0	+0.3/-0.5
T	6.0	+0.3/-0.5

### Marking



Example



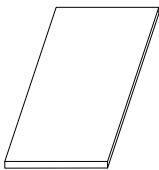
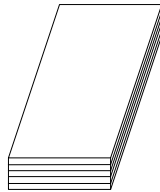
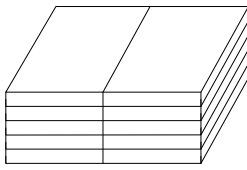
# Gas Discharge Tube: GD8 Series



## 2-Electrode $\Phi 8.0 \times T6$ mm Type

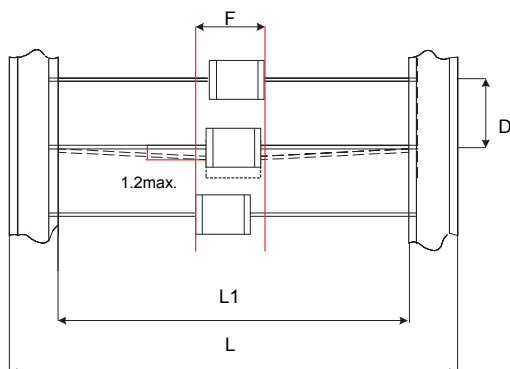
### ■ Packaging

- Bulk

Plastic Tray (252×135×10mm)	Inner Box (270×145×50mm)	Outside Box (310×280×275mm)
		
100 PCS/ Plastic Tray	500 PCS/ Box	5,000 PCS/ Carton

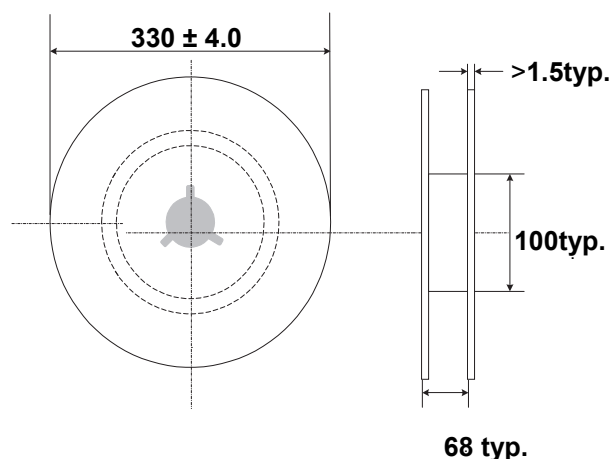
- Taping

For 2-electrode Axial Lead GDT: 500 PCS/Reel



Unit: mm

Item	Dimensions	
	Spec.	Tolerance
L1	52	$\pm 2$
L	64	$\pm 3$
D	10	$\pm 0.5$
F	T+ 1.4	Max.



### ■ Warehouse Storage Conditions of Products

- Storage Conditions:

1. Storage Temperature:  $-10^{\circ}\text{C} \sim +40^{\circ}\text{C}$
2. Relative Humidity:  $\leq 75\% \text{RH}$
3. Keep away from corrosive atmosphere and sunlight.

- Period of Storage: 1 year