



## Non-Insulated Terminals Bifurcated Hollow Sub & Micro Miniature

Please refer to Figure 2000

Part No.	Board Thick	Mounting Hole Dia	D Nom	L Nom	Swage Tool
2000AA	.016	.065	.063	.037	2000
2000A	.031	.065	.063	.053	2000
2000B	.062	.065	.063	.084	2000
2000C	.094	.065	.063	.115	2000
2000D	.125	.065	.063	.147	2000
2000E	.156	.065	.063	.179	2000
2000F	.188	.065	.063	.209	2000
2000G	.250	.065	.063	.271	2000
2000Z	.031	.065	.063	.066	2000

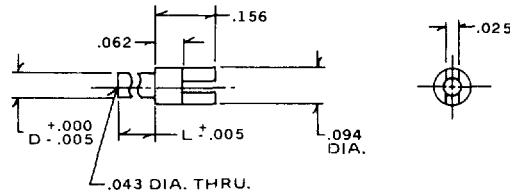


Fig. 2000

Please refer to Figure 2001

Part No.	Board Thick	Mounting Hole Dia	D Nom	L Nom	Swage Tool
2001AA	.016	.064	.062	.037	2001
2001A	.031	.064	.062	.053	2001
2001B	.062	.064	.062	.084	2001
2001C	.094	.064	.062	.115	2001
2001D	.125	.064	.062	.147	2001

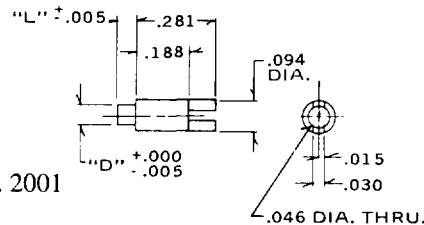


Fig. 2001

## Non-Insulated Terminals Bifurcated Solid

Please refer to Figure 1304

Part No.	Board Thick	Mounting Hole Dia	D Nom	L Nom	Swage Tool
1304A	.031	.112	.110	.075	1304
1304B	.062	.112	.110	.105	1304
1304C	.094	.112	.110	.135	1304
1304D	.125	.112	.110	.165	1304

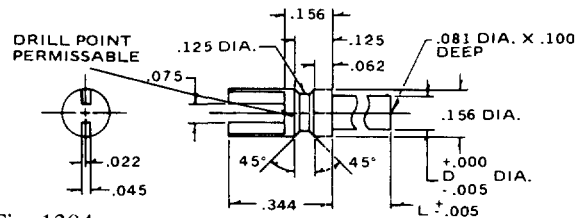


Fig. 1304

## Bifurcated Feed-Thru

Please refer to Figure 1315

Part No.	Board Thick	Mounting Hole Dia	D Nom	L Nom	Swage Tool
1315B	.062	.096	.094	.089	1315
1315C	.094	.096	.094	.120	1315
1315D	.125	.096	.094	.151	1315

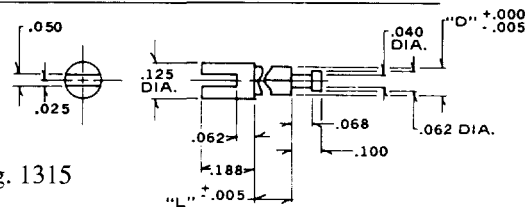


Fig. 1315

Please refer to Figure 1316

Part No.	Board Thick	Mounting Hole Dia	D Nom	L Nom	Swage Tool
1316B	.062	.096	.094	.089	1316
1316C	.094	.096	.094	.120	1316
1316D	.125	.096	.094	.151	1316

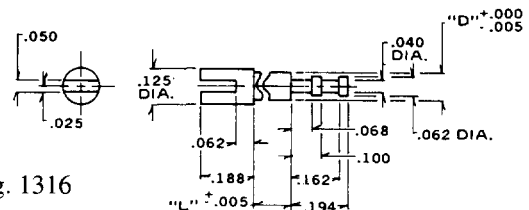


Fig. 1316

Standard Plating Suffix to Part Number

Terminal

See Page 93 for all plating options.

-1 (Ag over Cu)  
-7 (Au over Cu)

TOLERANCE: .xxx ±.005, .xx ±.01 (ALL DIMS. BEFORE PLATING)

Winchester Electronics

400 Park Road • Watertown, Ct 06795-0500 • Phone:(860)945-5000 • FAX: (860)945-5191 • E-MAIL: useco@litton-wed.com

