

SC-7P1-GG

# STANDARD, LOW PROFILE &

## Specifications: SC, SP, SK

**Contact:**

BeCu

**Shell:**

Brass

**-GG Plating:**

30µ" (0,76µm) Au over 50µ"

(1,27µm) Ni on contact;

10µ" (0,25µm) Au over 50µ"

(1,27µm) Ni on shell

**-GT Plating:**

30µ" (0,76µm) Au over 50µ"

(1,27µm) Ni on contact;

Sn over 50µ" (1,27µm) Ni on shell

**-TT Plating:**

Sn over 50µ" (1,27µm) Ni

on contact; Sn over 50µ"

(1,27µm) Ni on shell

**-ST Plating:**

10µ" (0,25µm) Au over 50µ"

(1,27µm) Ni on contact;

Sn over 50µ" (1,27µm) Ni on shell

**Current Rating:**

1 A

**Contact Resistance:**

10 mΩ max

**Insertion Force (SC):**

9 oz (2,50N) avg, 16 oz

(4,45N) max

**Withdrawal Force (SC):**

2.5 oz (0,70N) avg, 1.5 oz

(0,42N) min

**Insertion Force (EZ):**

2.5 oz (0,70N) avg, 5.5

(1,53N) oz max

**Withdrawal Force (EZ):**

2.0 oz (0,56N) avg, 0.35 oz

(0,10mm) min

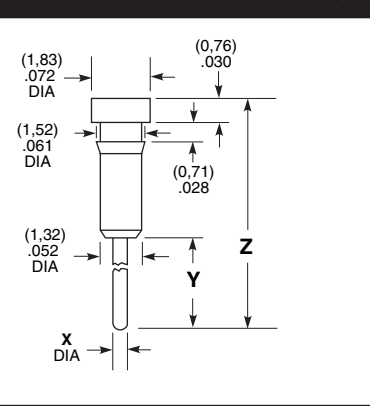
**Lead DIA Accepted:**

.015" to .022" (0,38mm to

0,56mm) and most IC leads

RECOMMENDED PC HOLE SIZE:	
LEAD SIZE	HOLE SIZE
(0,46) .018 DIA	(0,61) .024 DIA
(0,51) .020 DIA	(0,66) .026 DIA
(0,64) .025 DIA	(0,79) .031 DIA
(0,76) .030 DIA	(0,91) .036 DIA
(0,89) .035 DIA	(1,04) .041 DIA
(1,14) .045 DIA	(1,30) .051 DIA
(1,32) .052 DIA	(1,47) .058 DIA
(0,46) .018 SQ	(0,76) .030 DIA
(0,64) .025 SQ	(1,02) .040 DIA
(1,14) .045 SQ	(1,75) .069 DIA
(0,20) .008 x (0,71) .028	(0,89) .035 DIA
(0,25) .010 x (0,51) .020	(0,71) .028 DIA
(0,41) .016 x (0,51) .020	(0,79) .031 DIA
(0,41) .016 x (0,61) .024	(0,89) .035 DIA
(0,41) .016 x (0,79) .031	(1,04) .041 DIA

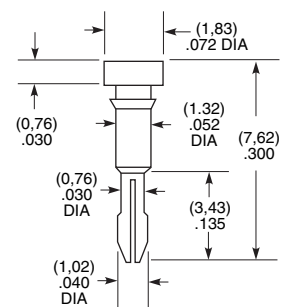
## SC-1P1-, SC-6P1-, SC-1P3-, SC-2P1- EZ-1P1-, EZ-6P1-, SC-7P1



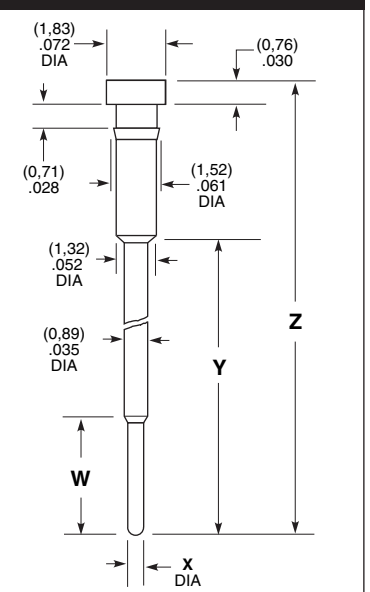
Part No.	X DIA	Y ±.010	Z ±.015
SC-1P1- EZ-1P1-	(0,51) .020	(3,18) .125	(7,62) .300
SC-6P1- EZ-6P1-	(0,51) .020	(4,57) .180	(8,89) .350
SC-1P3-	(0,64) .025	(10,41) .410	(15,24) .600
SC-2P1-	(0,89) .035	(12,95) .510	(17,86) .703
SC-7P1-	(0,51) .020	(7,06) .278	(11,25) .443

Insertion Depth (SC-1P1, SC-1L1, SC-6P1, SC-7P1) = .95" to .145" (2,41mm to 3,68mm)  
 Insertion Depth (SC-2P1) = .125" to .157" (3,18mm to 3,99mm)  
 Insertion Depth (SC-1P3) = .095" to .138" (2,41mm to 3,51mm)  
 Plating Available (SC-1P1, SC-1L1) = GG, GT, TT, ST  
 Plating Available (SC-6P1, SC-2P1, SC-7P1) = GG, GT

## SC-1L1- EZ-1L1-



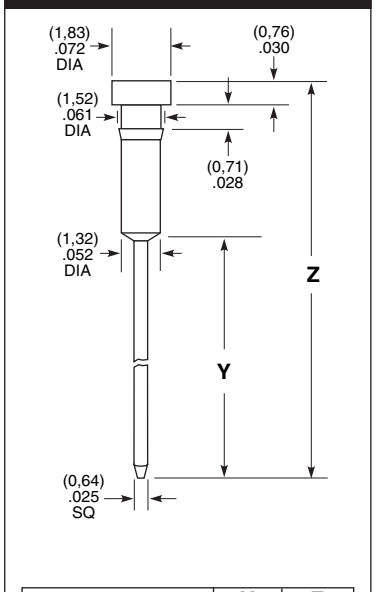
## SC-2P3-, EZ-2P3-, EZ-2P2-



Part No.	X DIA	W ±010	Y ±015	Z ±015
SC-2P3- EZ-2P3-	(0,51) .020	(4,32) .170	(8,86) .349	(13,77) .542
EZ-2P2-	(0,46) .018	(3,81) .150	(12,95) .510	(17,86) .703

Insertion Depth (SC-2P2) = .125" to .145" (3,18mm to 2,41mm)  
 Insertion Depth (SC-2P3) = .125" to .170" (3,18mm to 4,32mm)  
 Plating Available = GG, GT

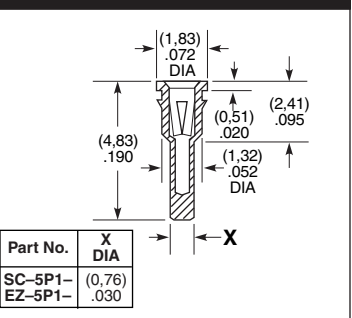
## SC-1W1- EZ-1W1-



Part No.	Y ±.010	Z ±.015
SC-1W1-XX-1 EZ-1W1-XX-1	(12,95) .510	(17,86) .703
SC-1W1-XX-2 EZ-1W1-XX-2	(9,14) .360	(14,05) .553
SC-1W1-XX-3 EZ-1W1-XX-3	(6,60) .260	(11,51) .453

Insertion Depth = .125" to .157" (3,18mm to 3,99mm)  
 Plating Available = GG, GT, TT

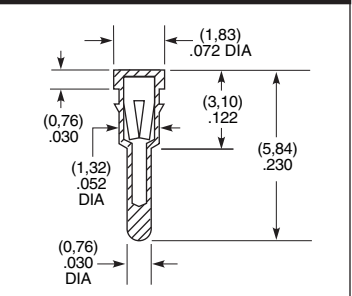
## SC-5P1- EZ-5P1-



Part No.	X DIA
SC-5P1- EZ-5P1-	(0,76) .030

Insertion Depth (SC-5P1) = .080" to .150" (2,03mm to 3,81mm)  
 Lead DIA Accepted: .016" to .020" (0,41mm to 0,51mm)  
 Plating Available (SC-5P1, EZ-5P1) = GG, GT, TT

## SC-3P1- EZ-3P1-

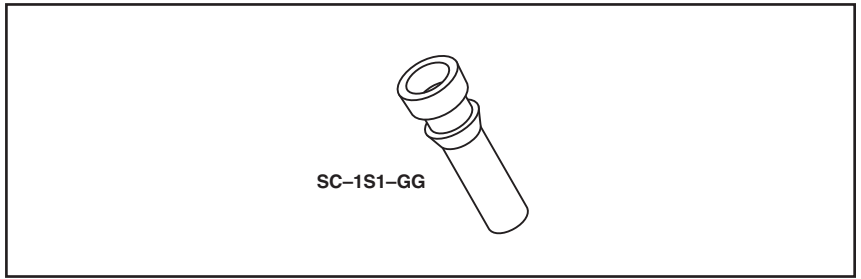


Insertion Depth = .105" to .170" (2,67mm to 4,32mm)  
 Lead DIA Accepted: .015" to .020" (0,38mm to 0,51mm)  
 Plating Available = GG, GT, TT

**Note:**  
 Some sizes, styles and options are non-standard, non-returnable.

Due to technical progress, all designs, specifications and components are subject to change without notice.

**WWW.SAMTEC.COM**



# SURFACE MOUNT SOCKETS SC, EZ SERIES

## Specifications:

### SC-1P4, 2P4

**Contact:** BeCu  
**Shell:** Brass  
**-GG Plating:**  
 20µ" (0,51µm) Au over 50µ" (1,27µm) Ni on contact, except SC-2P4 30µ" (0,76µm) Au; 10µ" Au over 50µ" (1,27µm) Ni on shell  
**-GT Plating:**  
 20µ" (0,51µm) Au over 50µ" (1,27µm) Ni on contact, except SC-2P4 30µ" (0,76µm) Au; Sn over 50µ" (1,27µm) Ni on shell  
**Current Rating:**  
 5 A  
**Contact Resistance:**  
 10 mΩ max  
**Insertion Force:**  
 6.5 oz (1,81N) avg, 13 oz (3,62N) max (.032" (0,81mm) DIA probe)  
**Withdrawal Force:** 3 oz (0,83N) avg, 2 oz (0,56N) min (.032" (0,81mm) DIA probe)

## Specifications:

### SC-2P8, 2P9

**Contact:** BeCu  
**Shell:** Brass  
**-GG Plating:**  
 20µ" (0,51µm) Au over 50µ" (1,27µm) Ni on contact; 10µ" (0,25µm) Au over 50µ" (1,27µm) Ni on shell  
**-GT Plating:**  
 20µ" (0,51µm) Au over 50µ" (1,27µm) Ni on contact; 200µ" (5,08µm) Sn over 50µ" (1,27µm) Ni on shell  
**Current Rating:**  
 10 A  
**Contact Resistance:**  
 10 mΩ max  
**Insertion Force:** SC-2P9 = 32 oz (8,90N) max (.050" (1,27mm) DIA probe); SC-2P8 = 16 oz (4,45N) max (.040" (1,02mm) DIA probe)  
**Withdrawal Force:** SC-2P9 2 oz (0,56N) min (.050" (1,27mm) DIA probe) SC-2P8 = 4 oz (1,11N) min (.040" (1,02mm) DIA probe)

## Specifications:

### T, S

**-G Plating:**  
 Au over 50µ" (1,27µm) Ni  
**-T Plating:**  
 Sn over 50µ" (1,27µm) Ni or 100µ" (2,54µm) Cu  
**Current Rating:**  
 1A except T-1S6 is 5A

**Note:**  
 Some sizes, styles and options are non-standard, non-returnable.

### SC-4P1-, EZ-4P1-

Insertion Depth = .080" to .105" (2,03mm to 2,67mm)  
 Lead DIA Accepted = .016" to .021" (0,41mm to 0,53mm)  
 Plating Available = GG, GT, TT

### SC-8P1-

Insertion Depth = .085" to .140" (2,16mm to 3,56mm)  
 Lead DIA Accepted = .016" to .020" (0,41mm to 0,51mm)  
 Plating Available = GG, GT, TT

### SC-1S1-, EZ-1S1-

Insertion Depth = .125" to .157" (3,18mm to 3,99mm)  
 Lead DIA Accepted = .015" to .022" (0,38mm to 0,56mm)  
 Plating Available = GG, GT

### SC-1P4-, SC-2P4-

Part No.	X DIA	Y	Z REF
SC-1P4-	(0,76) .030	(3,18) .125	(9,53) .375
SC-2P4-	(0,91) .036	(12,95) .510	(19,30) .760

Insertion Depth = .175" (4,45mm) to .215" (5,46mm)  
 Lead DIA Accepted = .032" (0,81mm) to .038" (0,97mm)  
 Plating Available = GG, GT

### SC-2P8-, SC-2P9-

Part No.	X DIA	Y
SC-2P8-	(2,08) .082	(6,10) .240
SC-2P9-	(2,59) .102	(6,86) .270

Insertion Depth (SC-2P8) = .165" (4,91mm) to .220" (5,59mm)  
 Lead DIA Accepted (SC-2P8) = .035" (0,89mm) to .045" (1,14mm)  
 Insertion Depth (SC-2P9) = .170" (4,32mm) to .205" (5,21mm)  
 Lead DIA Accepted (SC-2P9) = .045" (1,14mm) to .055" (1,40mm)  
 Plating Available = GG, GT

Due to technical progress, all designs, specifications and components are subject to change without notice.

WWW.SAMTEC.COM