

CTS CORPORATION

SPECIALISTS IN FREQUENCY MANAGEMENT

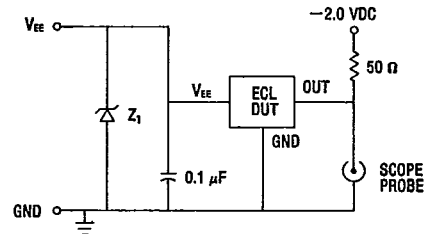
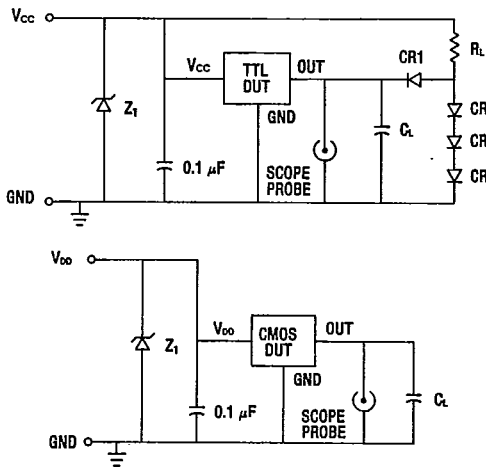
KNIGHTS DIVISION 400 Reimann Ave., Sandwich, IL 60548 • 815/786-8411 • TWX 910-642-0860 Cable CTS
FAX 815-786-9743

Engineering Data For Hybrid Oscillators

TYPICAL CHARACTERISTICS

- STORAGE TEMPERATURE: -65°C to +150°C.
- TEMPERATURE CYCLE: 25 cycles, -55°C to +125°C, per method 1010 of MIL-STD-883.
- CONSTANT ACCELERATION: 5000 G, Y1 direction, per method 2001 of MIL-STD-883.
- MECHANICAL SHOCK: 1500 G, 0.5 ms, 3 shocks per direction, per method 2002 of MIL-STD-883.
- SINUSOIDAL VIBRATION: 0.06" D.A., 10 to 55 Hz and 30 G, 55 to 2000 Hz, 3 cycles per direction, per method 2007 of MIL-STD-883.
- RANDOM VIBRATION: 20 G_{RMS}, 20 to 2000 Hz, per method 2026 of MIL-STD-883.
- LEAD INTEGRITY: Per conditions B1 and B2 in method 2004 of MIL-STD-883.
- HERMETICITY: 1 x 10⁻⁸ ATC-cc/sec, per conditions A1 and C in method 1014 of MIL-STD-883.
- MOISTURE RESISTANCE: 10 cycles, per method 1004 of MIL-STD-883 with step 7 subcycle omitted.
- CORROSION RESISTANCE: 24 hours, per condition A in method 1009 of MIL-STD-883.
- SOLDERABILITY: Per method 2003 of MIL-STD-883, or method 208 of MIL-STD-202.
- QUALITY: In accordance with MIL-I-45208.
- RESISTANCE TO SOLDERING HEAT: Per conditions A and C in method 210 of MIL-STD-202.
- MARKING PERMANENCE: Per method 2015 of MIL-STD-883.
- THERMAL RESISTANCE: Per method 1012.1 of MIL-STD-883:
 MXO-55 style package = 12°C/watt typical.
 TO-5/TO-8 style package = 8°C/watt typical.
 CCXO style package = 7°C/watt typical.
- ELECTROSTATIC DISCHARGE SENSITIVITY: Per method 3015 of MIL-STD-883:
 TTL output models — > 4 KV (Class B — not sensitive)
 ECL output models — > 4 KV (Class B — not sensitive)
 CMOS output models — < 2 KV (Class A — sensitive)
- STEADY-STATE LIFE: 1000 hrs. @ 125°C per method 1005 of MIL-STD-883, disregarding frequency shift.
- Frequency Aging: <10 ppm shift in 30 days @ 85°C ambient.
- No External Connection Allowed on N/C Pinouts.

EQUIVALENT TEST LOAD DIAGRAMS

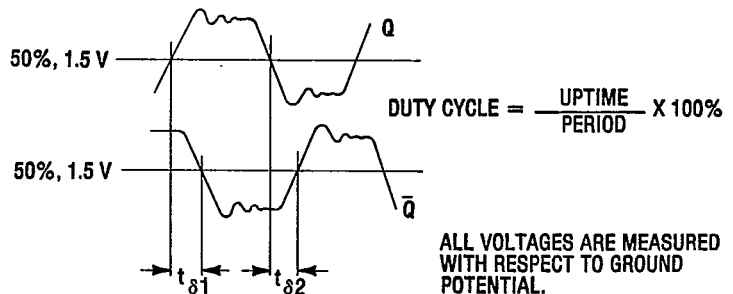
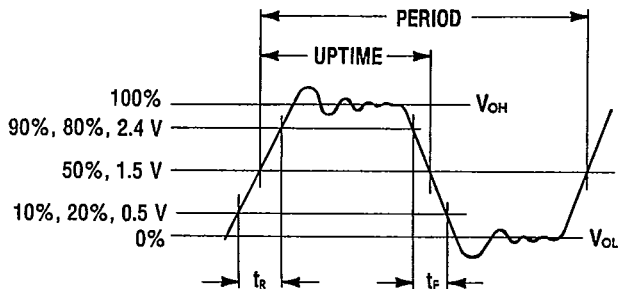


CL = 15 pF (including probe and fixture)
 CR1-CR4 = 1N3064 or equivalent
 RL = 270Ω for 10 STTL
 390Ω for 10 TTL
 560Ω for 5 STTL
 2kΩ for 10 LSTTL

NOTES:

1. All lead length should be kept as short as possible.
2. Waveform measurement system should have a minimum bandwidth of 5 times the frequency being tested.
3. Z1 is a transient surge suppressor recommended on all test fixturing. Diode should clamp within 20% of the maximum rated operating voltage in less than 10 picoseconds.

WAVEFORM CONDITIONS



ALL VOLTAGES ARE MEASURED WITH RESPECT TO GROUND POTENTIAL.

CTS CORPORATION
KNIGHTS DIVISION

SPECIALISTS IN FREQUENCY MANAGEMENT

400 Reimann Ave., Sandwich, IL 60548 • 815/786-8411 • TWX 910-642-0860 Cable CTS
 FAX 815-786-9743

Standard Distributor Hybrid Clock Oscillators

Choice of Three Logic Types:
 TTL, H-CMOS, ECL
 Fully Hermetic

Resistance Weld package, 14 PIN DIP Compatible.

FREQUENCY STABILITY: Inclusive of calibration tolerance @ 25°C, operating temperature range, environmental conditions, input voltage, aging and load change; ±.01%. Other stabilities available upon request.

OPERATING CONDITIONS:

Supply Voltage: 5.0V ± 10%
 Operating Temperature: 0 to 70°C
 Fan Out: 10 TTL loads
 Storage Temperature: -55 to +125°C

Popular frequencies of CTS Hybrid Clock Oscillators are available as "off-the-shelf" items from authorized CTS distributors under the following part numbers:

OUTLINE DRAWING

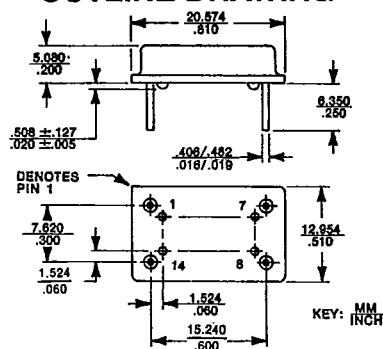


FIG. 9 MXO-55 PACKAGE

MX0-55 SERIES

TTL Logic ±.01% Stability

CTS P/N	FREQUENCY
MX055GB-2C	1.8432 MHz
MX055GB-2C	3.6864 MHz
MX055GB-2C	4.0000 MHz
MX055GA-2C	4.9152 MHz
MX055GA-2C	5.0688 MHz
MX055GA-2C	7.3728 MHz
MX055GA-2C	8.0000 MHz
MX055GA-2C	10.0000 MHz
MX055GA-2C	12.0000 MHz

CTS P/N	FREQUENCY
MX055GA-2C	14.31818 MHz
MX055GA-2C	16.0000 MHz
MX055GA-2C	16.257 MHz
MX055GA-2C	18.432 MHz
MX055GA-2C	19.6608 MHz
MX055GA-2C	20.0000 MHz
MX055GA-2C	24.0000 MHz
MX055GA-2C	32.0000 MHz
MX055GA-2C	40.0000 MHz

CX065 SERIES

HCMOS Logic ±.01% Stability

FREQUENCY	PART NUMBER
4.0000 MHz	CX065GA-2C-4.0 MHz
4.9152 MHz	CX065GA-2C-4.9152 MHz
8.0000 MHz	CX065GA-2C-8.0 MHz
10.0000 MHz	CX065GA-2C-10.0 MHz
12.0000 MHz	CX065GA-2C-12.0 MHz
16.0000 MHz	CX065GA-2C-16.0 MHz
20.0000 MHz	CX065GA-2C-20.0 MHz
24.0000 MHz	CX065GA-2C-24.0 MHz

EX055 SERIES

10KH ECL Logic ±0.01% Stability

FREQUENCY	PART NUMBER
80.0 MHz	EX055GO-2C-80.0 MHz
100.0 MHz	EX055GO-2C-100.0 MHz
110.0 MHz	EX055GO-2C-110.0 MHz
120.0 MHz	EX055GO-2C-120.0 MHz

See Data Sheets to Follow for Pin Connections and Complete Electrical Specifications.

Consult factory for new frequencies available in HCMOS logic.

CTS CORPORATION

SPECIALISTS IN FREQUENCY MANAGEMENT

KNIGHTS DIVISION 400 Reimann Ave., Sandwich, IL 60548 • 815/786-8411 • TWX 910-642-0860 Cable CTS
FAX 815-786-9743

Hybrid Clock Oscillators

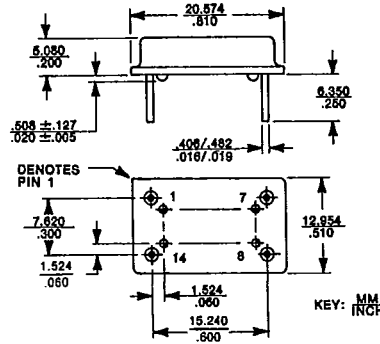
ORDERING INFORMATION

MXO-55 SERIES

TTL logic outputs
14 pin DIP compatible
19.2 KHz to 100 MHz

PIN CONNECTIONS

Pin 1: N/C, enable, or output
Pin 7: Ground/case
Pin 8: Output
Pin 14: +5 VDC



FREQUENCY, MODEL & OPTIONS	CODE
4.9152 MHz to 100 MHz Basic oscillator No enable	GA
4.9152 MHz to 70 MHz Basic oscillator with enable (NOTE 3, 5)	GAE
19.2 KHz to 4.9151 MHz Basic oscillator w/dividers	GB
307.2 KHz to 4.9151 MHz Divider output with enable	GBE
2.4576 MHz to 60 MHz Complementary outputs	GC
Dual outputs Pin 8: 307.2 KHz to 1.25 MHz Pin 1: 16X Pin 8	GD16
Dual outputs Pin 8: 614 KHz to 2.5 MHz Pin 1: 8X Pin 8	GD18
Dual outputs Pin 8: 1.228 MHz to 5 MHz Pin 1: 4X Pin 8	GD28
Dual outputs Pin 8: 2.457 MHz to 10 MHz Pin 1: 2X Pin 8	GD48

FREQUENCY TOLERANCE (NOTE 2)	CODE
±.1% (1000 ppm)	1
±.01% (100 ppm)	2
±.005% (50 ppm)	3
±.05% (500 ppm)	4
±.0025% (25 ppm) (0°C to 70°C only)	5

OPERATING TEMP. RANGE	CODE
0°C to +70°C	C
-40°C to +85°C	I
-55°C to +105°C	P
-55°C to +125°C	M

NOTE:

- When ordering screening similar to MIL-O-55310, Class B, add -MLB after frequency.
- Tolerances include 25°C accuracy, changes in operating temperature, supply voltage, load, environmental conditions, and aging.
- ENABLE FUNCTION (50 nsec max response time)
HI: ENABLES OSCILLATOR
LO: Disables oscillator (output latches HI)
- On frequencies below 307.2 KHz the crystal frequency will be on Pin 1.
- See MX053 Series for TRISTATE Output option.
- Short Circuit Output current = 100ma max and 5 minutes max duration at RMT

ELECTRICAL SPECIFICATIONS (MXO-55 SERIES)

SPECIFICATION	MODEL	FREQUENCY RANGE	TEMPERATURE RANGE	SYMBOL	MINIMUM	TYPICAL	MAXIMUM	UNITS				
Operating Voltage	A, B, C, D	19.2 KHz to 100 MHz	-55°C to +125°C	V _{cc}	4.75	5.00	5.25	V				
			-40°C to +85°C		4.50	5.00	5.50					
Maximum Supply Voltage			-55°C to +125°C	V _{cc} Max.			7.00					
Supply Current	A	4.9152 to 25 MHz	-55°C to +125°C	I _{cc}		20	35	mA				
		>25 to <70 MHz			33	65						
		70 to 100 MHz			60	110						
	B	2.4576 to <4.9152 MHz			30	50						
		307.2 KHz to <2.4576 MHz			45	75						
	C	19.2 to <307.2 KHz			70	125						
		>12 to 60 MHz			15	22	75					
		2.4576 to 12 MHz			30	50						
D	307.2 KHz to 10 MHz	45	75									
Output Voltage — HI	A, B, C, D	19.2 KHz to 100 MHz	-55°C to +125°C	V _{OH}	2.40	3.60		V				
Output Voltage — LO			-40°C to +85°C			0.30	0.50					
Rise & Fall Time (measured between 0.5V & 2.4V)	A	4.9152 to 25 MHz	-55°C to +125°C	t _r & t _f		3	5	nS				
		>25 to 100 MHz			2	4						
	B	2.4576 to <4.9152 MHz			3	5						
		19.2 KHz to <2.4576 MHz			8	18						
	C	2.4576 to 60 MHz			3	5						
		307.2 KHz to 10 MHz			8	18						
	Start-up Time	A, B, C, D			19.2 KHz to 25 MHz	-55°C to +125°C	t _s			2	5	mS
		A			>25 to 100 MHz					8	15	
Duty Cycle (uptime) (measured @ 1.5V)	A	4.9152 to 25 MHz	0°C to +70°C		45	50	55	%				
			-55°C to +125°C		40	50	60					
		>25 to 100 MHz		35	50	65						
	B	2.4576 to <4.9152 MHz	-55°C to +125°C		45	50	55					
		19.2 KHz to <2.4576 MHz		40	50	60						
	C	2.4576 to 12 MHz	0°C to +70°C		45	50	55					
			-55°C to +125°C		45	50	55					
		>12 MHz to 60 MHz		35	50	65						
	D	307.2 KHz to 10 MHz	0°C to +70°C		45	50	55					
			-55°C to +125°C		40	50	60					
			0°C to +70°C		45	50	55					
	Phase Delay (measured @ 1.5V)	C	>12 to 60 MHz	0°C to +70°C	t _{d1} & t _{d2}		6		10	nS		
-55°C to +125°C					6	12						
2.4576 to 12 MHz			0°C to +70°C		3	5						
			-55°C to +125°C		3	8						
Enable Input Load Factor	AE	4.9152 to 70 MHz	-60°C to +125°C	F ₁			1					
		2.4576 to 70 MHz	-55°C to +125°C				10					
Fanout (per output)	A, B, C	2.4576 to 70 MHz	-40°C to +85°C	F _o			2	S-TTL Gates				
		>70 MHz to 100 MHz				5						
	A	19.2 KHz to <2.4576 MHz	-55°C to +125°C			10	TTL Gates					
		D	307.2 KHz to 10 MHz		-55°C to +125°C			10				

CTS CORPORATION

KNIGHTS DIVISION

SPECIALISTS IN FREQUENCY MANAGEMENT

400 Reimann Ave., Sandwich, IL 60548 • 815/786-8411 • TWX 910-642-0860 Cable CTS
FAX 815-786-9743

JKTO-79 SERIES

TTL logic outputs
"A" MODELS are electrically similar to MXO55GA Models
"B" MODELS are electrically similar to MXO55GB Models from 307.2 KHZ to <2.4576 MHZ
TO-8 compatible
500 KHZ to 70 MHZ

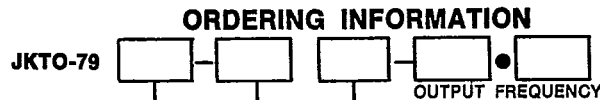
ENABLE FUNCTION

4 MHz to 12 MHz:
HI: Enables oscillator
LO: Disables oscillator (Q_A latches LO, Q_B latches HI)
500 KHZ to <4 MHz:
LO: Enables oscillator
HI: Disables oscillator (Q_A & Q_B latch LO)

CE MODEL now available from 3.5 to 25.0 MHZ

Enable and latch as above except from 12.01 to 25.0 MHZ

HI: Enables oscillator
LO: Disables oscillator
Q_A latches HI
Q_B latches LO



FREQUENCY AND MODEL AND OPTION	CODE
7.0 MHz to 70.0 MHz Basic oscillator No enable	A
500 KHz to 7.0 MHz Oscillator with divider No enable	B
3.5 MHz to 25 MHz Oscillator with Complementary output - No enable	C
Oscillator with dual outputs and no enable Q _A = 4X Q _B Q _B = 1 to 3 MHz	D28
Oscillator with dual outputs and no enable Q _A = 2X Q _B Q _B = 1 to 3 MHz	D48
Any of above (below 12 MHz) with enable For CE MODEL see note at left	AE BE D28E D48E

FREQUENCY TOL. (NOTE 2)	CODE
±.1% (1000 ppm)	1
±.01% (100 ppm)	2
±.005% (50 ppm)	3
±.05% (500 ppm)	4
±.0025% (25 ppm) (0°C to 70°C only)	5

OPERATING TEMP. RANGE	CODE
0°C to +70°C	C
-40°C to +85°C	I
-55°C to +105°C	P
-55°C to +125°C	M

NOTE 2:
Tolerance includes 25°C accuracy, changes in operating temperature, supply voltage, load, environmental conditions, and aging.

PIN	CONNECTION
1	Enable/disable option (otherwise NC)
2	Internal connection
3	Output A (Q _A) (otherwise NC)
4	Ground
5	Output B (Q _B)
6	Internal connection
7	NC (Model A) Internal connection (Model B, C, D) Crystal frequency (Model C, D)
8	Vcc

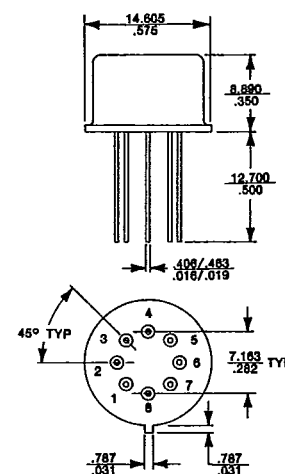


FIG. 11 TO-8 PACKAGE

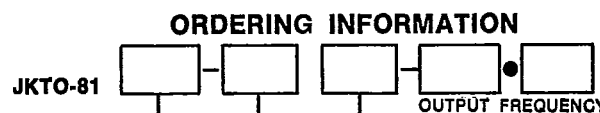
NOTE: Screening Similar to MIL-0-55310, Class B Available by Adding -MLB to the End of the P/N.

JKTO-81 SERIES

TTL logic output
"A" MODELS are electronically similar to MXO55GA Models
"B" MODELS are electrically similar to MXO55GB Models from 307.2 KHZ to <2.4576 MHZ
TO-5 compatible
1 MHz to 25 MHz

PIN CONNECTION

Pin 1: N/C
Pin 2: Internal connection
Pin 3: N/C
Pin 4: Ground/case
Pin 5: Output
Pin 6: Internal connection
Pin 7: N/C
Pin 8: +5 VDC



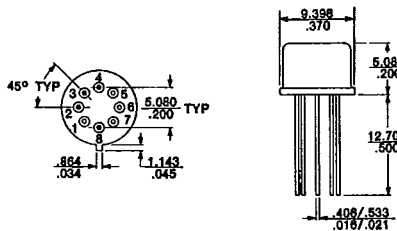
FREQUENCY AND MODEL AND OPTION	CODE
12 to 25MHz Basic oscillator	A
1 to <12 MHz Basic oscillator with dividers	B

FREQUENCY TOL. (NOTE 2)	CODE
±.1% (1000 ppm)	1
±.01% (100 ppm)	2
±.005% (50 ppm)	3
±.05% (500 ppm)	4

OPERATING TEMP. RANGE	CODE
0°C to +70°C	C
-40°C to +85°C	I
-55°C to +105°C	P
-55°C to +125°C	M

See NOTE 2 above.

FIG. 10 TO-5 PACKAGE



NOTE: Screening Similar to MIL-0-55310, Class B Available by Adding -MLB to the End of the P/N.

CTS CORPORATION

SPECIALISTS IN FREQUENCY MANAGEMENT

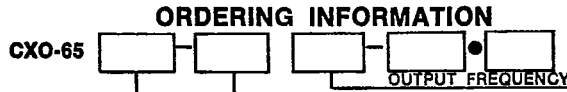
KNIGHTS DIVISION 400 Reimann Ave., Sandwich, IL 60548 • 815/786-8411 • TWX 910-642-0860 Cable CTS
FAX 815-786-9743

C-MOS Compatible Hybrid Clock Oscillators

CXO-65 SERIES

High speed CMOS logic output
14-pin DIP compatible
(MXO-55 style)
200 Hz to 50 MHz
PIN CONNECTIONS
Pin 1: N/C or Enable
Pin 7: Ground/Case
Pin 8: Output
Pin 14: +5 VDC

ENABLE INPUT	OUTPUT
Open or High	Oscillator Output
Low	Latches High



FREQUENCY AND MODEL	CODE
3.0 to 50 MHz Basic oscillator	GA
200 Hz to <3.0 MHz Basic oscillator with dividers	GB
3.0 to 50.0 MHz Basic oscillator with enable (active high)	GAE

FREQUENCY TOL. (NOTE 2)	CODE
±.1% (1000 ppm)	1
±.01% (100 ppm)	2
±.005% (50 ppm)	3
±.05% (500 ppm)	4
±.0025% (25 ppm) (0°C to 70°C only)	5

OPERATING TEMP. RANGE	CODE
0°C to +70°C	C
-40°C to +85°C	I
-55°C to +105°C	P
-55°C to +125°C	M

NOTE: Screening Similar to MIL-C-55310, Class B Available by Adding -MLB to the End of the P/N.

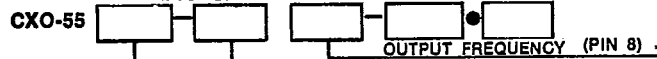
CX065G SERIES ELECTRICAL CHARACTERISTICS

SPECIFICATION	MODEL	FREQ. RANGE	TEMP. RANGE	CONDITIONS	SYMBOL	MIN.	TYPICAL	MAX.	UNITS
Operating Voltage	A, B	200 Hz - 25 MHz	-40°C to +85°C		V _{DD}	4.50	5.00	5.50	VDC
		25 MHz - 50 MHz	-55°C to +125°C			4.75		5.25	
Max. Supply Voltage		200 Hz - 50 MHz			V _{DD} (max.)			7.00	
Input Current vs. Frequency	B	200 Hz - <3 MHz	-55°C to +125°C	C _L = 50 pf	I _{DD}		6.0	10.0	mA
	A	3 MHz - 50 MHz				1.0	1.2		
Output Voltage - Hi	A, B	200 Hz - 50 MHz	-55°C to +125°C	C _L = 50 pf FO = 10 LS TTL	V _{OH}	V _{DD} - 0.2	V _{DD} - 0.1		V
						3.5	4.5		
Output Voltage - Lo	A, B			C _L = 50 pf FO = 10 LS TTL	V _{OL}		0.1	0.2	V
							0.2	0.4	
Rise & Fall Times	B	200 Hz - 2.9 MHz	-40°C to +85°C	C _L = 50 pf 10% to 90% of Waveform	t _r & t _f		14	20	nS
			-55°C to +125°C				25		
	A	3 MHz - 25 MHz	-40°C to +85°C				9	12	
			-55°C to +125°C				15		
	A, B	>25 MHz - 50 MHz	-40°C to +85°C			5	8		
					-55°C to +125°C		10		
(FO = Fan Out)	A, B	200 Hz - 50 MHz	-55°C to +125°C	FO = 10 LS TTL 0.5V to 2.4V			2	.5	
Duty Cycle (% Uptime)	B	200 Hz - <3 MHz	-55°C to +125°C	C _L = 50 pf @ 50% of Waveform			45	55	%
							40	60	
							40	60	
Output Current - Hi	A, B	200 Hz - 50 MHz	-55°C to +125°C	V _{OH} = 3.7V	I _{OH}		4.0		mA
							4.0		
							4.0		
Input Current - Lo	A, B	200 Hz - 50 MHz	-55°C to +125°C	V _{OL} = 0.4V	I _{OL}		50		pf
							50		
							50		
Fan Out	A, B	200 Hz - 50 MHz	-55°C to +125°C		FO		10		LS TTL
Enable Input Volt	AE	3 MHz - 50 MHz	-55°C to +125°C		V _{IH}		3.20	5.50	V
Disable Input Volt						V _{IL}	-0.50	1.30	

CXO-55 SERIES

Low power consumption
CMOS logic output
14-pin DIP compatible
(MXO-55 style)
200 Hz to 5 MHz
PIN CONNECTIONS
Pin 1: N/C
Pin 7: Ground/Case
Pin 8: Output
Pin 14: +5 VDC to + 15 VDC

ORDERING INFORMATION (SEE NOTE)



FREQUENCY AND MODEL	CODE
3 to 5 MHz Basic oscillator	GA
200 Hz to <3 MHz Basic oscillator with dividers	GB

FREQUENCY TOL. (NOTE 2)	CODE
±.1% (1000 ppm)	1
±.01% (100 ppm)	2
±.005% (50 ppm)	3
±.05% (500 ppm)	4

OPERATING TEMP. RANGE	CODE
0°C to +70°C	C
-40°C to +85°C	I
-55°C to +105°C	P
-55°C to +125°C	M

ELECTRICAL SPECIFICATIONS

SPECIFICATION	MODEL	FREQ. RANGE	TEMP. RANGE	CONDITIONS	SYMBOL	MIN.	TYPICAL	MAX.	UNITS	
Operating Voltage	A, B	200 Hz to 5 MHz	-55°C to +125°C		V _{DD}	4.50	5.00	15.50	V	
Max. Supply Voltage						V _{DD} Max.		18		
Supply Current	B	200 Hz to <3 MHz	-55°C to +125°C	C _L = 15 pf	I _{DD}	V _{DD} = 5V		3	mA	
						V _{DD} = 10V		5		
						V _{DD} = 15V		8		
	A	3 MHz to 5 MHz					V _{DD} = 5V		4	
							V _{DD} = 10V		7	
							V _{DD} = 15V		12	
Output Voltage—HI	A, B	200 Hz to 5 MHz	-55°C to +125°C	C _L = Max.	V _{OH}	V _{DD} - .5	V _{DD} - .1		V	
Output Voltage—LO						V _{OL}		.1		.5
Rise & Fall Times (measured from 10% to 90% waveform)	A, B	200 Hz to 5 MHz	-55°C to +125°C	C _L = Max.	t _r & t _f	V _{DD} = 5V		130	nS	
						V _{DD} = 10V		70		
						V _{DD} = 15V		45		
Duty Cycle (uptime) (@ 50% of waveform)	A, B	200 Hz to 5 MHz	-55°C to +125°C	C _L = Max.		40	50	60	%	
Output Load	B	200 Hz to <3.0 MHz	-55°C to +125°C		C _L			50	pf	
	A	3.0 MHz to 5 MHz					15			
Output Current—HI (source)	A, B	200 Hz to 5 MHz	-55°C to +125°C	V _{OH} = 4.5V V _{OH} = 9.5V V _{OH} = 14.5V	I _{OH}	V _{DD} = 5V		-100	μA	
						V _{DD} = 10V		-250		
						V _{DD} = 15V		-800		
Output Current—Lo (Sink)	A, B	200 Hz to 5 MHz	-55°C to +125°C	V _{OL} = .5V	I _{OL}	V _{DD} = 5V		300		
						V _{DD} = 10V		900		
						V _{DD} = 15V		2000		

NOTE: Frequency stability is guaranteed for ±10% supply voltage tolerance. Although the CXO-55 may operate from 5 to 15 VDC, standard frequency calibration is done at V_{DD}=5 VDC. If your application requires V_{DD} to be other than 5 VDC, please specify nominal V_{DD}, when ordering, to insure proper frequency accuracy and stability.

CTS CORPORATION

KNIGHTS DIVISION

SPECIALISTS IN FREQUENCY MANAGEMENT

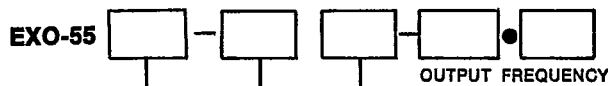
400 Reimann Ave., Sandwich, IL 60548 • 815/786-8411 • TWX 910-642-0860 Cable CTS
FAX 815-786-9743

ECL Compatible Hybrid Clock Oscillators

EXO-55 SERIES

10KH ECL logic output
14-pin DIP compatible
8 MHz to 130 MHz
Standard Frequencies Available
thru Franchised Distributors.

ORDERING INFORMATION



CASE GROUND	CODE
ISOLATED CASE	G0
PIN 1 CASE	G1
PIN 7 CASE	G7
PIN 14 CASE	G14

FREQUENCY TOL. (NOTE 2)	CODE
±.1% (1000 ppm)	1
±.01% (100 ppm)	2
±.005% (50 ppm)	3
±.05% (500 ppm)	4

OPERATING TEMPERATURE RANGE	CODE
0°C to +70°C	C
-40°C to +85°C	I

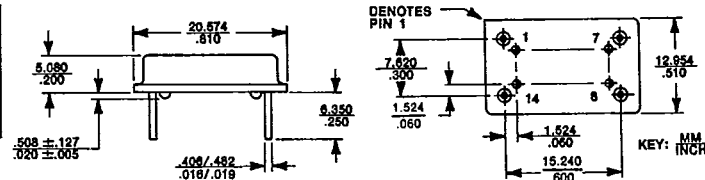
ELECTRICAL CHARACTERISTICS (INTO 50 Ω TO -2.0 VDC LOAD)

FREQUENCY RANGE	OPERATING TEMPERATURE	SPECIFICATION	SYMBOL	MINIMUM	TYPICAL	MAXIMUM	UNITS		
8.0 to 130 MHz	-40°C to +85°C	Operating Voltage	V _{EE}	-4.94	-5.20	-5.46	V		
		Max. Supply Voltage	V _{EE} Max.			-7.0			
		Supply Current	I _{EE}			50	mA		
		Output Voltage—HI	V _{OH}	-1.05	-.95	-.75	V		
		Output Voltage—LO	V _{OL}	-2.05	-1.80	-1.60			
		Rise & Fall Times (measured between 20% & 80%)	t _r & t _f			1.5	2.5	nS	
		Duty Cycle (uptime) (measured @ 50%)				40	50	60	%
		Output Current—HI @ -.95V	I _{OH}	-19.0	-22.0			mA	
		Output Current—LO @ -1.75V	I _{OL}	-1.0	-5.0				
		Output Load				50 Ω to -2.0 VDC			

PIN CONNECTIONS				
PIN	STANDARD	EX055G1	(OPTIONAL) EX055G7	EX055G14
1	N/C	CASE	N/C	N/C
7	-V _{EE}	-V _{EE}	GND/CASE	-V _{EE}
8	OUTPUT	OUTPUT	OUTPUT	OUTPUT
14	GROUND	GROUND	-V _{EE}	GND/CASE

Note: Military Designs Available
Complementary output available as G0C, G7C or G14C only

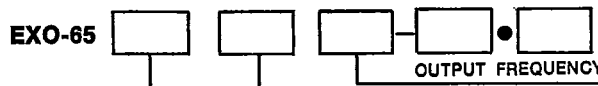
OUTLINE DRAWING



EXO-65 SERIES

100K ECL logic output
14-pin DIP compatible
25 MHz to 200 MHz

ORDERING INFORMATION



CASE GROUND	CODE
ISOLATED CASE	G0
PIN 1 CASE	G1
PIN 7 CASE	G7
PIN 14 CASE	G14

FREQUENCY TOL. (NOTE 2)	CODE
±.1% (1000 ppm)	1
±.01% (100 ppm)	2
±.005% (50 ppm)	3
±.05% (500 ppm)	4

OPERATING TEMPERATURE RANGE	CODE
0°C to +70°C	C

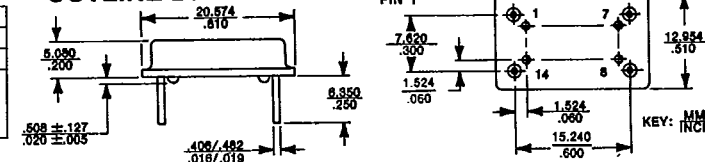
ELECTRICAL CHARACTERISTICS (INTO 50 Ω TO -2.0 VDC LOAD)

FREQUENCY RANGE	OPERATING TEMPERATURE	SPECIFICATION	SYMBOL	MINIMUM	TYPICAL	MAXIMUM	UNITS		
25.0 to 200 MHz	-40°C to +85°C	Operating Voltage	V _{EE}	-4.20	-4.50	-5.46	V		
		Max. Supply Voltage	V _{EE} Max.			-5.70			
		Supply Current	I _{EE}			85	100	mA	
		Output Voltage—HI	V _{OH}	-1.04	-.95	-.85	V		
		Output Voltage—LO	V _{OL}	-1.90	-1.80	-1.60			
		Rise & Fall Times (measured between 20% & 80%)	t _r & t _f			1.0	1.5	nS	
		Duty Cycle (uptime) (measured @ 50%)				40	50	60	%
		Output Current—HI @ -1.0V	I _{OH}	-19.2	-21.0			mA	
		Output Current—LO @ -1.7V	I _{OL}	-2.0	-6.0				
		Output Load				50 Ω to -2.0 VDC			

PIN CONNECTIONS				
PIN	STANDARD	EX065G1	(OPTIONAL) EX065G7	EX065G14
1	N/C	CASE	N/C	N/C
7	-V _{EE}	-V _{EE}	GND/CASE	-V _{EE}
8	OUTPUT	OUTPUT	OUTPUT	OUTPUT
14	GROUND	GROUND	-V _{EE}	GND/CASE

Note: Military Designs Available Composit same as EXO55 series

OUTLINE DRAWING



CTS CORPORATION

SPECIALISTS IN FREQUENCY MANAGEMENT

KNIGHTS DIVISION 400 Reimann Ave., Sandwich, IL 60548 • 815/786-8411 • TWX 910-642-0860 Cable CTS
FAX 815-786-9743

Voltage Controlled Hybrid Clock Oscillator

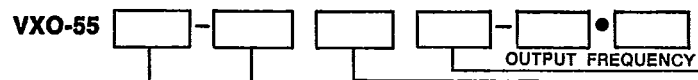
VXO-55 SERIES

TTL logic output*
14 pin DIP compatible
(MXO-55 style/.290" Max Height)
765 KHz to 25 MHz
*HCMOS Logic Models also available, consult factory for VXO65 Model

PIN CONNECTIONS

Pin 1: Frequency control voltage
Pin 7: Ground/case
Pin 8: Output
Pin 14: +5 VDC

ORDERING INFORMATION



FREQUENCY AND MODEL	CODE
12.25 to 25.0 MHz Basic Oscillator	GA
765 KHz to <12.25 MHz Basic oscillator with dividers	GB

FREQUENCY DEVIATION*	CODE
±120 ppm min.	1
±200 ppm min.	2

* Positive slope

FREQUENCY TOLERANCE Vc = 2.50V	CODE
±.01% (100 ppm)	2
±.005% (50 ppm)	3

OPERATING TEMPERATURE RANGE	CODE
0°C to 70°C	C
-40°C to 85°C	I

ELECTRICAL SPECIFICATIONS

SPECIFICATION	MODEL	FREQUENCY RANGE	SYMBOL	MINIMUM	TYPICAL	MAXIMUM	UNITS
Operating Voltage	A, B	765 KHz to 25 MHz	Vcc	4.50	5.00	5.50	V
Maximum Supply Voltage			Vcc Max.			7.00	
Supply Current	A	12.25 MHz to 25 MHz	Icc		18	25	mA
	B	3.0625 MHz to <12.25 MHz			30	60	
		765 KHz to <3.0625 MHz			45	75	
Output Voltage — HI	A, B	765 KHz to 25 MHz	VoH	2.40	3.60		V
Output Voltage — LO			VoL		0.25	0.40	
Rise & Fall Time (measured between 0.5V to 2.4V)	A, B	3.0625MHz to 25 MHz	tr, tf		3	5	nS
		765 KHz to <3.0625 MHz			8	18	
Duty Cycle (measured @ 1.5V)	A, B	12.25 MHz to 25 MHz		40	50	60	%
		765 KHz to <12.25 MHz		45	50	55	
Control Voltage	A, B	765 KHz to 25 MHz	Vc	0.0	2.5	5.0	V
Start-up Time	A, B	765 KHz to 25 MHz	ts		5	15	mS
Control Voltage Input Impedance	A, B	765 KHz to 25 MHz		100K			Ω
Fanout	A	12.25 MHz to 25 MHz	Fo			10	TTL Loads
	B	765 KHz to <12.25 MHz				10	

Tri-State Hybrid Clock Oscillators

MXO-53 SERIES

3-state, TTL logic output*
14-pin DIP compatible
(MXO-55 style)
200 Hz to 70 MHz
*HCMOS Logic also available, consult factory for CXO63 Model.

Designed for automated, in-circuit, and functional board test applications where a high impedance output state is required to allow the injection of external test signals.

ORDERING INFORMATION



FREQUENCY & MODEL	CODE
4.9152 to 70 MHz Basic 3-state oscillator	GA
200 Hz to 4.9151 MHz 3-state oscillator with dividers	GB

FREQUENCY TOLERANCE	CODE
±.1% (1000 ppm)	1
±.01% (100 ppm)	2
±.005% (50 ppm)	3
±.05% (500 ppm)	4
±.0025% (25 ppm) (0°C to 70°C only)	5

OPERATING TEMP. RANGE	CODE
0°C to +70°C	C
-40°C to +85°C	I

PIN CONNECTIONS

Pin 1: Enable
Pin 7: Ground/case
Pin 8: Output
Pin 14: +5 VDC

ENABLE FUNCTION

HI: Enables oscillator
LO: Disables oscillator
(HI impedance output)

ELECTRICAL SPECIFICATIONS (SIMILAR TO MXO-55 EXCEPT AS NOTED BELOW)

SPECIFICATION	MODEL	FREQUENCY RANGE	TEMPERATURE RANGE	SYMBOL	MINIMUM	TYPICAL	MAXIMUM	UNITS
Supply Current	A	4.9152 to 25 MHz	-40°C to +85°C	Icc		35	55	mA
		>25 to 70 MHz				50	80	
	200 Hz to <4.9151 MHz				60	100		
Duty Cycle (uptime) (measured @ 1.5V)	A, B	200 Hz to 70 MHz	-40°C to +85°C		40	50	60	%
High Impedance Output Current	A, B	200 Hz to 70 MHz	-40°C to +85°C	Io (OFF)			50	μA

CTS CORPORATION

KNIGHTS DIVISION

SPECIALISTS IN FREQUENCY MANAGEMENT

400 Reimann Ave., Sandwich, IL 60548 • 815/786-8411 • TWX 910-642-0860 Cable CTS
FAX 815-786-9743

Surface Mount Hybrid Clock Oscillators

■ **SURFACE MOUNT APPLICATIONS**—CTS Knights presently offers a number of options to suit your surface mount needs. Besides the CCXO series, leadless chip carriers, we are offering the MXO-55 style package in an economical surface mountable configuration, through a simple lead formation operation. The surface mount option is specified by adding an "S" to the part number (eg. SMXO-55, SCXO-65).

■ **VAPOR PHASE REFLOW**—CTS Knights' standard hybrid oscillators are capable of withstanding hand and wave soldering processes, but are not manufactured to survive vapor phase reflow profiles without degradation to device reliability. All surface mountable products are built with a special, high-temperature construction process to allow vapor phase reflow.

Standard DIP SERIES

The Standard DIP surface mount series squarewave crystal oscillator is contained in a rugged, economical .500" x .800", hermetically sealed metal package. The leads are shaped for surface mounting in a fullwing design.

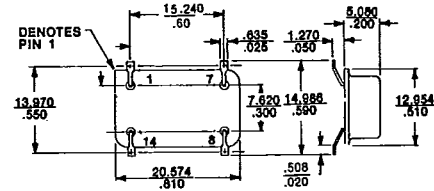


FIG. 6 SMXO-55

AVAILABLE MODELS:

SURFACE MOUNT	EQUIVALENT STANDARD SERIES	LOGIC	FREQUENCY RANGE
SMX055	MX055	TTL	19.2 KHz TO 100 MHz
SCX055	CX055	CMOS	200 Hz TO 5 MHz
SCX065	CX065	HCMOS	1 MHz TO 25 MHz
SVX055	VX055	TTL VXCO	765 KHz TO 25 MHz
SEX055	EX055	10KH ECL	8 MHz TO 125 MHz
SEX065	EX065	100K ECL	25 MHz TO 150 MHz
SMX065	MX065	MOS OR MOS/TTL	2.4576 MHz TO 12 MHz
SMX053	MX053	TTL TRI-STATE	200 Hz TO 70 MHz

Mini-DIP SERIES

The Mini-DIP surface mount series of squarewave crystal oscillators are contained in a rugged, economical .500" x .500", hermetically sealed metal package. The leads are shaped for surface mounting in a gullwing design.

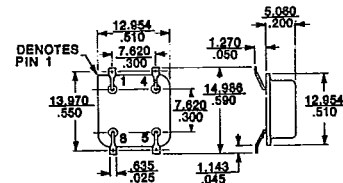


FIG. 6 SMXO-25

AVAILABLE MODELS:

SURFACE MOUNT	ELECTRICALLY EQUIVALENT STANDARD SERIES	LOGIC	FREQUENCY RANGE
SMX025	MX055	TTL	307.2 KHz TO 70 MHz
SCX025	CX065	HCMOS	3 MHz TO 25 MHz

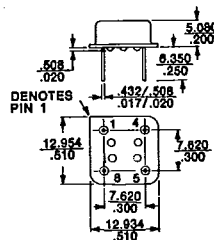
MINIATURE DUAL-IN-LINE OSCILLATORS

MXO-25 SERIES

TTL logic output
electrically similar to MXO-55
310 KHz to 70 MHz

CXO-25 SERIES

Hi-speed CMOS logic output
Electrically similar to CXO-65
200 Hz to 50 MHz



Pin 1—N/C
Pin 4—Ground/case
Pin 5—Output
Pin 8—+5 VDC supply

FIG. 5 Mini-DIP PACKAGE

CTS CORPORATION

SPECIALISTS IN FREQUENCY MANAGEMENT

KNIGHTS DIVISION

400 Reimann Ave., Sandwich, IL 60548 • 815/786-8411 • TWX 910-642-0860 Cable CTS
FAX 815-786-9743

Military Hybrid Clock Oscillators

CTS Knights is a Qualified Products List (QPL) supplier for MIL-O-55310/8, 14, 16, 17, 14-pin dual-in-line package
TTL logic output
Frequencies from 50 Hz to 60 MHz
Class B screening

PIN CONNECTIONS
In accordance with appropriate slash sheet

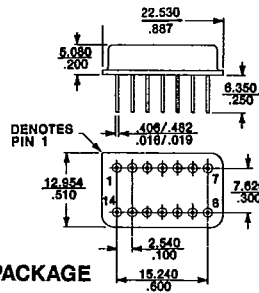


FIG. 8 MILITARY PACKAGE

CTS Knights also supplies product equivalent to the following MIL-O-55310 specification with qualification anticipated soon:

SPECIFICATION	TYPE
M55310/9	TTL, TO-5
M55310/10	TTL, TO-8
M55310/11	CMOS, 14-pin DIP
M55310/15	CMOS, 14-pin DIP
M55310/18	CMOS, 14-pin DIP
M55310/19	TTL, 40-pin LCC
M55310/20	TTL, 44-pin LCC

M55310/16 SERIES ORDERING INFORMATION

M55310/16-



-(EXACT FREQUENCY)

SCREENING	
CODE	CLASS
B	CLASS B

FREQUENCY RANGE	
CODE	FREQUENCY
0	50 Hz to <250 Hz
1	250 Hz to <150 KHz
2	150 KHz to <5.0 MHz
3	4.0 MHz to <20 MHz
4	20 MHz to 60MHz

TOLERANCE (PPM)				
CODE	TEMP. RANGE	FREQ. ACCURACY @ 23°C	FREQ. STABILITY VS TEMP.	AGING (PER YEAR)
1A	-55°/125°C	15 ppm	50	5 ppm
1B	-55°/105°C		40	
1C	-20°/70°C		25	
4A	-55°/125°C	25 ppm	100	10 ppm
4B	-55°/105°C		80	
4C	-20°/70°C		50	

M55310/08 SERIES ORDERING INFORMATION

M55310/08-



-(EXACT FREQUENCY)

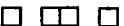
SCREENING	
CODE	CLASS
B	CLASS B

FREQUENCY RANGE		AGING (PER YEAR)
CODE	FREQUENCY	
01	1.0 KHz to <150.0 KHz	5
02	150.0 KHz to <300.0 KHz	
03	300.0 KHz to <600.0 KHz	
04	600.0 KHz to <2.5 MHz	
05	2.5 MHz to <5.0 MHz	
06	5.0 MHz to <10.0 MHz	
07	10.0 MHz to <20.0 MHz	10
08	20.0 MHz to <30.0 MHz	
09	30.0 MHz to <50.0 MHz	
10	50.0 Hz to <1.0 KHz	

TOLERANCE (PPM)			
CODE	TEMP. RANGE	FREQ. ACCURACY @ 23°C	FREQ. STABILITY VS TEMP.
A	-55 to +125°C	15 ppm (TYP)	± 50ppm
B	-55 to +105°C		± 40ppm
C	-20 to +70°C		± 25ppm

M55310/14 SERIES ORDERING INFORMATION

M55310/14-



-(EXACT FREQUENCY)

SCREENING	
CODE	CLASS
B	CLASS B

FREQUENCY RANGE	
CODE	FREQUENCY
01	50 Hz to <1.0 KHz
02	1.0 KHz to <150.0 KHz
03	150.0 KHz to <300.0 KHz
04	300.0 KHz to <600.0 KHz
05	600.0 KHz to <2.5 MHz
06	2.5 MHz to <5.0 MHz
07	5.0 MHz to <10.0 MHz
08	10.0 MHz to <15.0 MHz
09	15.0 MHz to ≤25.0 MHz

TOLERANCE (PPM)				
CODE	TEMP. RANGE	FREQ. ACCURACY @ 23°C	FREQ. STABILITY VS TEMP.	AGING (PER YEAR)
A	-55 to +125°C	15 ppm	± 50 ppm	5 ppm
B	-55 to +105°C		± 40 ppm	
C	-20 to +70°C		± 25 ppm	

M55310/17 SERIES ORDERING INFORMATION

M55310/17-



-(EXACT FREQUENCY)

SCREENING	
CODE	CLASS
B	CLASS B

FREQUENCY RANGE	
CODE	FREQUENCY
0	250.0 KHz to <5.0 MHz
1	4.0 MHz to <20.0 MHz
2	20.0 MHz to ≤50.0 MHz

TOLERANCE (PPM)				
CODE	TEMP. RANGE	FREQ. ACCURACY @ 23°C	FREQ. STABILITY VS TEMP.	AGING (PER YEAR)
1A	-55°/125°C	15 ppm*	50	5 ppm
1B	-55°/105°C		40	
1C	-20°/70°C		25	
4A, B or C	as above	25 ppm	100	10 ppm

NOTE:
■ HIGH RELIABILITY SCREENING—All hybrid oscillators, at your option, can be screened similar to the Class B requirements of MIL-O-55310. To request this option, add "MLB" after the part number (e.g. MXO-55GA-2C-16.0 MHz-MLB).

*01 is 10 ppm

