

SMD Power Chokes (Unshielded)

CSN054B Series

Part Number	Mark	Inductance	Test Freq.	D.C.R. (at 20°C) Max.(ohm)	Rated Current (A)*
CSN054B-100M	AM	10uH+/-20%	2.52MHz	0.10	1.44
CSN054B-120M	BM	12uH+/-20%	2.52MHz	0.12	1.40
CSN054B-150M	CM	15uH+/-20%	2.52MHz	0.14	1.30
CSN054B-180M	DM	18uH+/-20%	2.52MHz	0.15	1.23
CSN054B-220M	EM	22uH+/-20%	2.52MHz	0.18	1.11
CSN054B-270M	FM	27uH+/-20%	2.52MHz	0.20	0.97
CSN054B-330L	GL	33uH+/-15%	2.52MHz	0.23	0.88
CSN054B-390L	HL	39uH+/-15%	2.52MHz	0.32	0.80
CSN054B-470L	JL	47uH+/-15%	2.52MHz	0.37	0.72

Part Number	Mark	Inductance	Test Freq.	D.C.R. (at 20°C) Max.(ohm)	Rated Current (A)*
CSN054B-560K	KK	56uH+/-10%	2.52MHz	0.42	0.68
CSN054B-680K	LK	68uH+/-10%	2.52MHz	0.46	0.61
CSN054B-820K	MK	82uH+/-10%	2.52MHz	0.60	0.58
CSN054B-101K	NK	100uH+/-10%	1KHz	0.70	0.5
CSN054B-121K	PK	120uH+/-10%	1KHz	0.93	0.48
CSN054B-151K	QK	150uH+/-10%	1KHz	1.10	0.40
CSN054B-181K	RK	180uH+/-10%	1KHz	1.38	0.38
CSN054B-221K	SK	220uH+/-10%	1KHz	1.57	0.35

CSN075B Series

Part Number	Mark	Inductance	Test Freq.	D.C.R. (at 20°C) Max. (ohm)	Rated Current (A)*
CSN075B-100K	100K	10uH+/-10%	2.52MHz	0.07	2.30
CSN075B-120K	120K	12uH+/-10%	2.52MHz	0.08	2.00
CSN075B-150K	150K	15uH+/-10%	2.52MHz	0.09	1.80
CSN075B-180K	180K	18uH+/-10%	2.52MHz	0.10	1.60
CSN075B-220K	220K	22uH+/-10%	2.52MHz	0.11	1.50
CSN075B-270K	270K	27uH+/-10%	2.52MHz	0.12	1.30
CSN075B-330K	330K	33uH+/-10%	2.52MHz	0.13	1.20
CSN075B-390K	390K	39uH+/-10%	2.52MHz	0.16	1.10
CSN075B-470K	470K	47uH+/-10%	2.52MHz	0.18	1.10
CSN075B-560K	560K	56uH+/-10%	2.52MHz	0.24	0.94
CSN075B-680K	680K	68uH+/-10%	2.52MHz	0.28	0.85

Part Number	Mark	Inductance	Test Freq.	D.C.R. (at 20°C) Max. (ohm)	Rated Current (A)*
CSN075B-820K	820K	82uH+/-10%	2.52MHz	0.37	0.78
CSN075B-101K	101K	100uH+/-10%	1KHz	0.43	0.72
CSN075B-121K	121K	120uH+/-10%	1KHz	0.47	0.66
CSN075B-151K	151K	150uH+/-10%	1KHz	0.64	0.58
CSN075B-181K	181K	180uH+/-10%	1KHz	0.71	0.51
CSN075B-221K	221K	220uH+/-10%	1KHz	0.96	0.49
CSN075B-271K	271K	270uH+/-10%	1KHz	1.11	0.42
CSN075B-331K	331K	330uH+/-10%	1KHz	1.26	0.40
CSN075B-391K	391K	390uH+/-10%	1KHz	1.77	0.36
CSN075B-471K	471K	470uH+/-10%	1KHz	1.96	0.34

CSN105B Series

Part Number	Mark	Inductance	Test Freq.	D.C.R. (at 20°C) Max.(ohm)	Rated Current (A)*
CSN105B-100M	100M	10uH+/-20%	2.52MHz	0.06	2.60
CSN105B-120M	120M	12uH+/-20%	2.52MHz	0.07	2.45
CSN105B-150M	150M	15uH+/-20%	2.52MHz	0.08	2.27
CSN105B-180M	180M	18uH+/-20%	2.52MHz	0.09	2.15
CSN105B-220M	220M	22uH+/-20%	2.52MHz	0.10	1.95
CSN105B-270M	270M	27uH+/-20%	2.52MHz	0.11	1.76

Part Number	Mark	Inductance	Test Freq.	D.C.R. (at 20°C) Max.(ohm)	Rated Current (A)*
CSN105B-330M	330M	33uH+/-20%	2.52MHz	0.12	1.50
CSN105B-390M	390M	39uH+/-20%	2.52MHz	0.14	1.37
CSN105B-470 K	470K	47uH+/-10%	2.52MHz	0.17	1.28
CSN105B-560 K	560K	56uH+/-10%	2.52MHz	0.19	1.17
CSN105B-680 K	680K	68uH+/-10%	2.52MHz	0.22	1.11
CSN105B-820 K	820K	82uH+/-10%	2.52MHz	0.25	1.00

Tolerance: M±20% .L±15% .K10%

Inductance drops no more than 10% at rated current applied or temperature rise ▲ T = 40° C

SMD Power Chokes (Unshielded)

CSN105B Series (Cont'd)

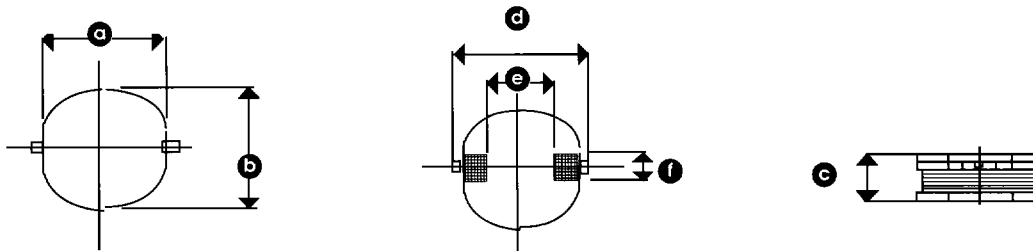
Part Number	Mark	Inductance	Test Freq.	D.C.R. (at 20°C) Max. (ohm)	Rated Current (A)*
CSN105B-101K	101K	100uH+/-10%	1KHz	0.35	0.97
CSN105B-121K	121K	120uH+/-10%	1KHz	0.40	0.89
CSN105B-151K	151K	150uH+/-10%	1KHz	0.47	0.78
CSN105B-181K	181K	180uH+/-10%	1KHz	0.63	0.72
CSN105B-221K	221K	220uH+/-10%	1KHz	0.73	0.66
CSN105B-271K	271K	270uH+/-10%	1KHz	0.97	0.57

Part Number	Mark	Inductance	Test Freq.	D.C.R. (at 20°C) Max. (ohm)	Rated Current (A)*
CSN105B-331K	331K	331uH+/-10%	1KHz	1.15	0.52
CSN105B-391K	391K	390uH+/-10%	1KHz	1.30	0.48
CSN105B-471K	471K	470uH+/-10%	1KHz	1.48	0.42
CSN105B-561K	561K	560uH+/-10%	1KHz	1.90	0.33
CSN105B-681K	681K	680uH+/-10%	1KHz	2.25	0.28
CSN105B-821K	821K	820uH+/-10%	1KHz	2.55	0.24

Tolerance: M±20% . L±15% . K10%

Inductance drops no more than 10% at rated current applied or temperature rise ▲ T = 40° C

Dimensions



PRODUCT SERIES	a	b	c	d	e	f
CSN054B	5.2 (+0.5,-0.2)	5.8+/-0.25	5.5 (±0.2)	8.5 MAX	1.8+/-0.3	3+/-0.2
CSN075B	7.0 (+0.5,-0.2)	7.8+/-0.3	5.5 (±0.2)	10.5 MAX	3.7+/-0.3	3+/-0.2
CSN105B	9.0 (+0.5,-0.2)	10.0+/-0.35	5.5 (±0.2)	12.5 MAX	5.6+/-0.3	3+/-0.2

